

ArcSpot XLFC

IP66 Spot featuring 11.600 lumen with 61x 4W RGB+WarmWhite source, 10° native
ORDER CODE: **ARCSPOTLFCGY**



The **ArcSpot** series offers a range of IP66-rated dynamic luminaires, designed for exterior lighting of landscapes, trees, architectural features, and facades. This series provides a variety of fixture sizes and accessories, enabling precise targeting of the desired light intensity and quality for any application.

Among the series, the **ArcSpot XLFC** stands out as an extra large sized round spot. It is equipped with 61x 4W RGB+WarmWhite LED source, delivering 10° beam angle with a fixture output of 11.600 lumens.

These fixtures are engineered with a dual chamber design, with the physical separation of light sources and power units. This not only facilitates individual component replacement but also enhances heat dissipation, contributing to more durable applications and extended product longevity. Enhanced with a C5M marine-grade treatment, they are ideal for outdoor use, even in challenging salty environments or near the sea.

The unit is DMX compatible, offering the convenience of remote management via RDM.

Completing the **ArcSpot** series is a comprehensive selection of optics, holographic filters and light modifiers, providing endless possibilities in light distribution to suit every occasion.

MAIN FEATURES

- Exterior Spot featuring 11.600 lumen with 61x 4W RGB+WarmWhite LED source
- IP66 with C5M for permanent exterior installation also in marine environment with dual chamber design
- Comprehensive selection of optics, holographic filters and light modifiers

TECHNICAL SPECIFICATION

LIGHT SOURCE

- Source: 61 x 4 W RGB + Warm White LED
- CCT: 2.800K - 10.000K
- Luminous flux: 11'684 @full
- Lux: 8'728 lx @5 m full
- Source life expectancy: > 90.000 hrs (L70B10 @Ta 25° C / 77° F)

OPTICS

- Beam angle: 11°
- Field angle: 19°
- Additional optics: see available accessories

COLOUR SYSTEM

- Colour mixing: RGB + Warm White
- Colour wheel: gel filters included
- Macros: built-in white presets

DYNAMIC EFFECTS

- Static mode: selection of static dimmer, colors and color temperature
- Manual mode: manual adjustment of colour
- Auto mode: built-in programs with execution speed adjustment

BODY

- Hardware on-board: optional accessories: half snoot and louvre
- Body: sturdy die-cast aluminium body, scratch resistant paint (C5M as standard)
- Body colour: RAL 7012

CONTROL

- Protocols: DMX512, RDM
- DMX channels: 5 / 6 / 9 / 12 channel
- RDM: RDM for remote monitoring and settings
- Display: user interface through DATAMASTER external coder (not included)
- Firmware upgrade: yes, via USB - DMX interface (UPBOXPRO/UPBOX1) not included
- Master/Slave: for synchronised operation of more units linked in a chain
- Other: 16bit control of dimmer and colour

ELECTRONICS

- Dimmer: linear 0 ~ 100% electronic dimmer
- Dimmer curves: 4 selectable dimming modes available
- Strobe / shutter: 1-30 Hz, electronic
- Operating temperature: -20° C / +45° C (-4° F / +113° F)
- LED Control: flicker free frequency with adjustable PWM
- Selectable PWM: 600 ~ 25.000 Hz

ELECTRICAL

- Mains power supply: 100-240V - 50/60Hz
- Max power consumption: 220 W
- Standby power: 0,5 W
- Power factor: > 0,9
- Inrush current: 110VAC/10.4A, 230VAC/16.9A

PHYSICAL

- IP rating: 66 for outdoor installations
- IK rating: 08
- Suspension and fixing: bracket for hanging and positioning
- Adaptors: XLR and BARE END 16A adaptors included
- Signal connection: 53 cm moulded IP signal IN/OUT connectors
- Power connection: 53 cm moulded IP power IN connector
- Dimensions (WxHxD): 339x372x153 mm
- Weight: 8,5 kg

CERTIFICATIONS / APPROVALS

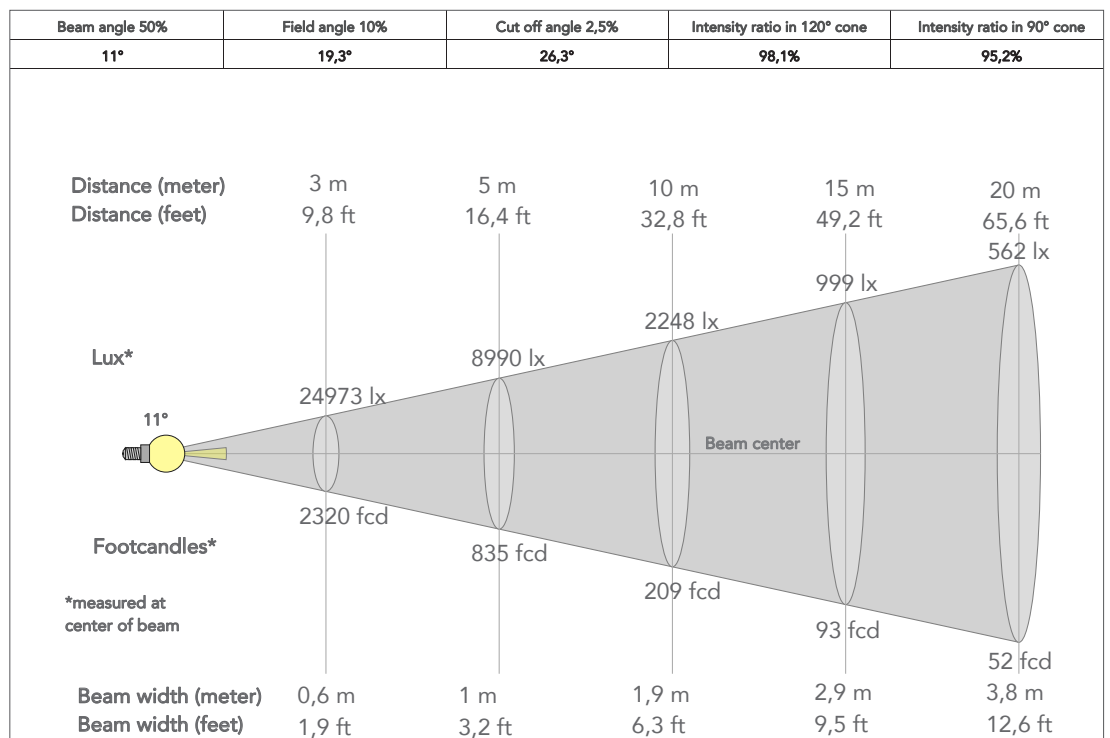
- Certifications / Approvals: CE, RCM, FCC, cTUVus

ACCESSORIES & RELATED PRODUCTS

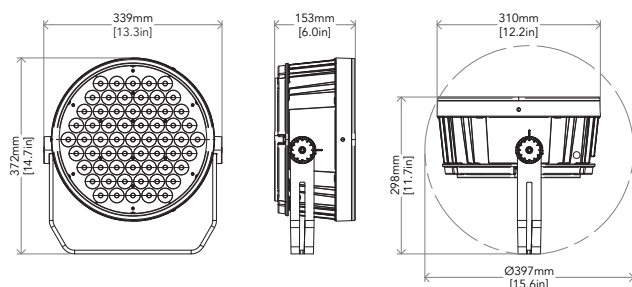
- CRMXBOXIP67 IP67 1 Universe CRMX Wireless Transceiver for exterior installation
- ASLENS10/15/25 Lens for ARCSPOT series, 10°/15°/25°
- ARLFILTER20/40/60 Light diffusion filter for ARCSPOTS series, 20°/40°/60°/10°x60°/30°x60°
- ARLHSNOOTGY Half snoot for ARCSPOTS series
- ARLHLOUVREGY Honeycomb louvre for ARCSPOTS series
- AWEXAC203/05/10/20 Extension IP67 power cable, IPpowercon-F -> IPpowercon-M, 3/5/10/20m
- AWEXDC2L0305/10/20 Extension IP67 signal cable, IPdataCON-F -> IPdataCON-M, 3/5/10/20m
- AWEXDC1221ADP Signal adapter kit from AWEXDC1 series to AWEXDC2 series and vice versa
- AWEXAC12ADP Power adapter from AWEXAC1 cable series to AWEXAC2 cable series
- IPTESTBOX Portable vacuum and pressure tester for ProLights IP fixtures
- UPBOX1UP5 Firmware uploader kit, USB IN, 5p XLR DMX OUT, DMX OUT
- UPBOXPRO Firmware uploader kit, USB IN, 5-pin XLR DMX OUT connector

PRESET FULL ON

Beam angle 50%:



TECHICAL DRAWINGS



CERTIFICATIONS / APPROVALS



Conforms to UL STD. 1573
Certified to CSA STD: C22.2 NO. 166

Visit our website for specifications and tech documentations

