

# Photometric Test Report



## Astra Profile900

900W Profile Moving head, with 7000K white LED source, 5° - 52° zoom

## CONTENTS

Table of contents	2
Testing process	3
<b>Preset Full on</b>	
Beam angle Max Zoom	4
Beam angle Med Zoom	9
Beam angle Min Zoom	14
<b>Preset CTO 3200K</b>	
Beam Angle Max Zoom	19
Beam angle Med Zoom	24
Beam angle Min Zoom	29
<b>Preset High CRI</b>	
Beam Angle Max Zoom	34
Beam angle Med Zoom	39
Beam angle Min Zoom	44

## TESTING PROCESS

Prolights has its own optical testing laboratory in order to provide accurate photometric reports for its lighting products. The testing laboratory contains certain variety of precise lighting measurement systems that ensure an optimal reading of all the characteristic parameters of the lighting devices. All measurements are made at a controlled room temperature of 20°C without any external light sources. This photometric report is obtained through the data measured by a high precision measurement system and analyzed by a dedicate software.

### **Prolights measurement instrument**

Prolights measurement instrument is a complete measurement system for any light source. It's equipped with two-axis goniometer, that enables to measure the full 3D distribution field of the light source. This instrument measures the light intensity, the beam angle and the most significative colors parameters, like color temperature, spectral distribution, CRI, CQS, TM-30 with a very high accuracy rate.

**Please Note:** All measurements are made with light source at operating temperature. Before starting the measurement, the instrument analyzes the process of the light source during the heating phase. The measuring process of all the parameters begins only when the light emission is stable, that is with a variation of less than 0.5% in a 15 minutes time frame.

### **Prolights measurement software**

The software provides user friendly interface for the operator who does the measurements, and it also analyzes and processes all the collected data by the instrument. With this software it is possible to see the measured data in real-time and it is possible to examine all the measured data and graphics afterwards as well. All information is collected in a specific Prolights template, and the software creates also IES and LDT files, which are widely used to transfer the photometric data, and to develop lighting system.

Additionally, the fixtures are rechecked using various hand-held instruments like Sekonic C-700 and Gossen Mavospec Base, this is done to ensure, that the data in the photometric report are as accurate as possible.



Total lumen output:

42919 lm

Peak candela output:

76495 cd

Light quality:

CRI: 69,0

Color temperature:

6828 K

**PRODUCT NAME:**

ASTRAPROFILE900

**MEASURAMENT CONDITIONS:**

Beam angle:

Max Zoom

Target:

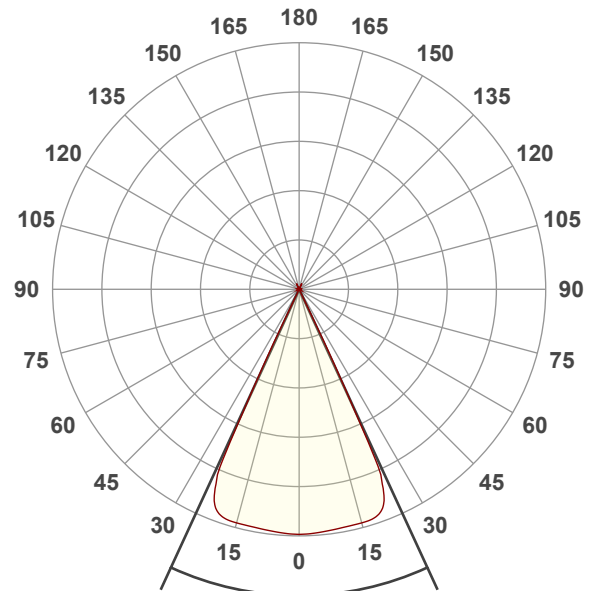
Full On

Operator:

Salvatore Giglio

Date and time:

13/12/2024 09:48:18

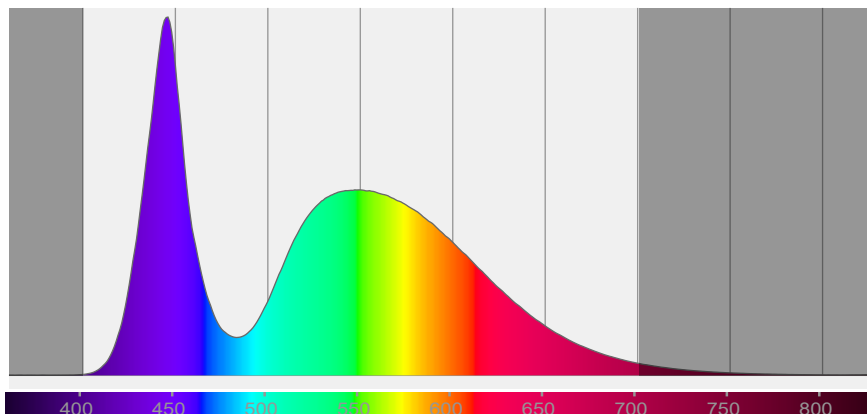


Beam angle 50%: 49,5°

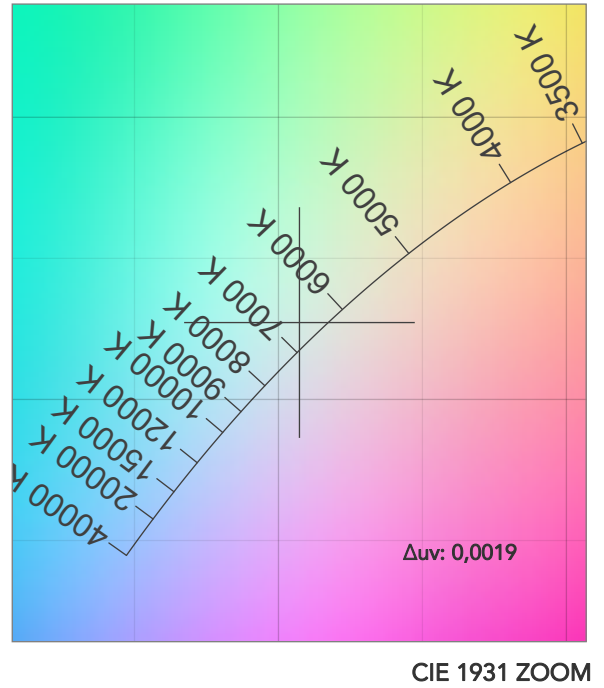
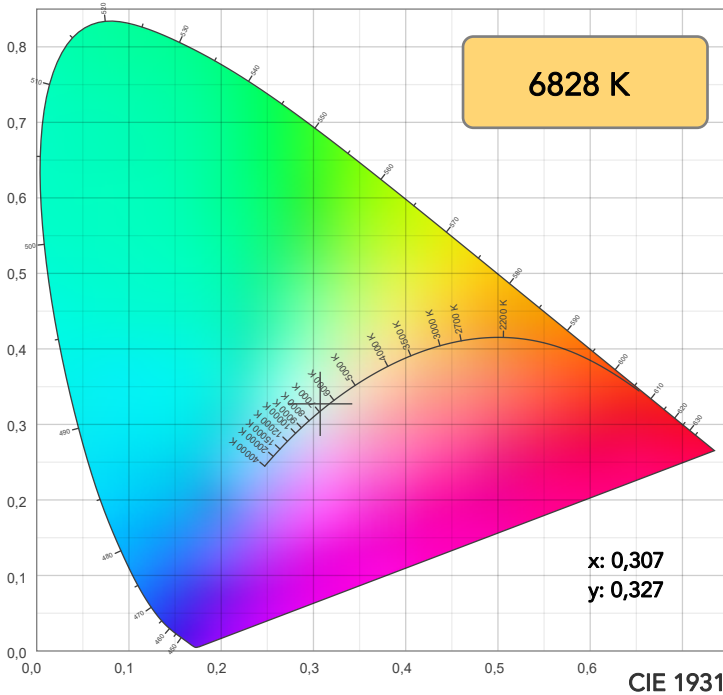
Field angle 10%: 51,7°

Cut off angle 2.5%: 52,1°

Spectra

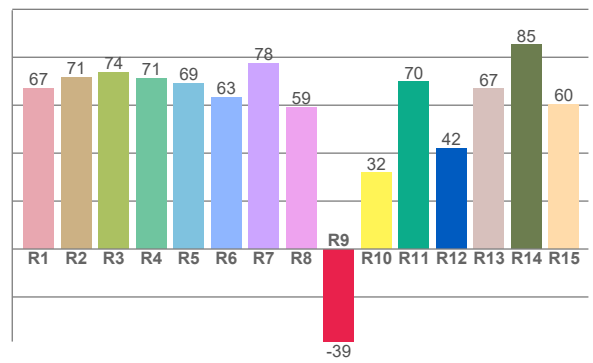
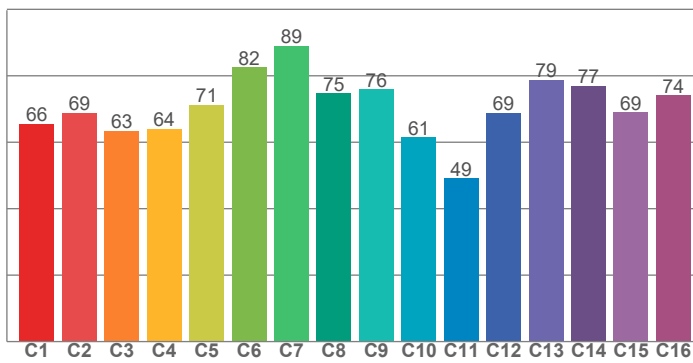


# COLOR DETAILS



TM30: 70,5

CRI: 69,0 (R1-R8)



CRI R values, only R1-R8 are used to calculate final CRI value

R1	R2	R3	R4	R5	R6	R7	R8	R9	R10	R11	R12	R13	R14	R15
67,1	71,5	73,7	71,1	69,1	63,2	77,6	59,1	-38,6	31,8	69,8	42,1	66,8	85,2	60,3

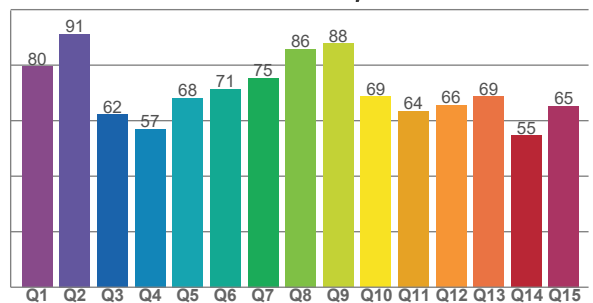
TM30 C values, 16 binned values out of total of 99 C values

C1	C2	C3	C4	C5	C6	C7	C8	C9	C10	C11	C12	C13	C14	C15	C16
65,5	68,9	63,4	64,0	71,3	82,5	89,0	74,8	75,9	61,5	49,1	68,8	78,8	76,9	69,0	74,1

CQS Q values

Q1	Q2	Q3	Q4	Q5	Q6	Q7	Q8	Q9	Q10	Q11	Q12	Q13	Q14	Q15
79,6	91,3	62,2	57,1	68,1	71,4	75,4	85,8	87,7	68,8	63,5	65,6	68,7	54,6	65,2

CQS: 69,1



## COLOR PARAMETERS

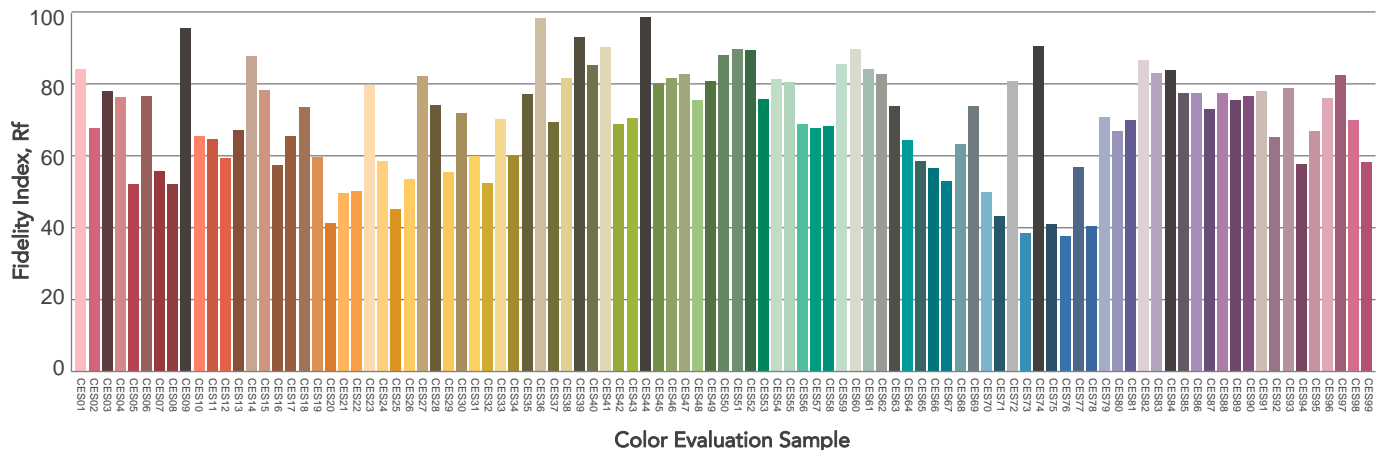
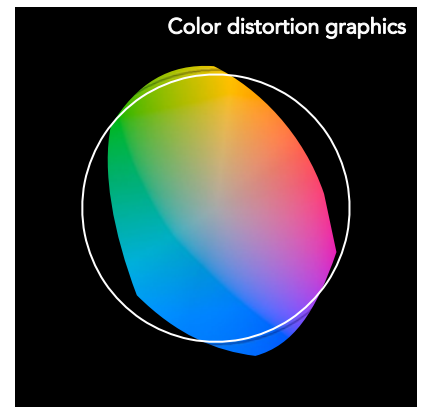
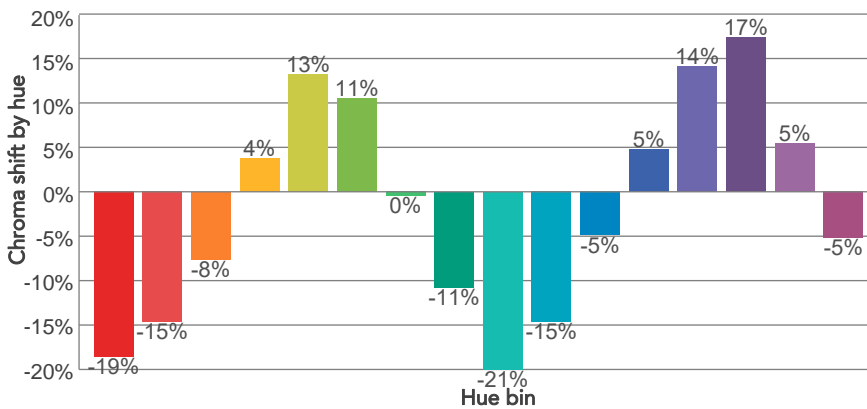
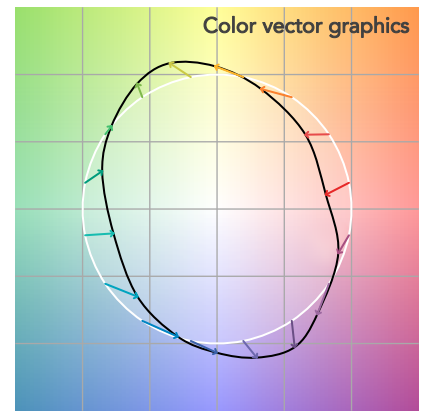
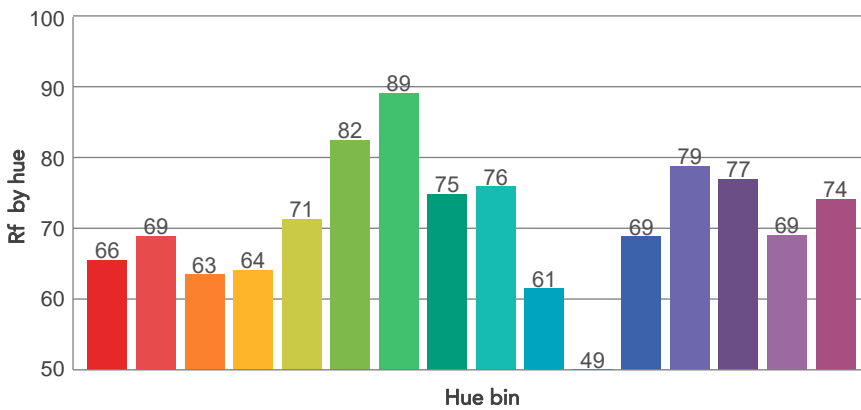
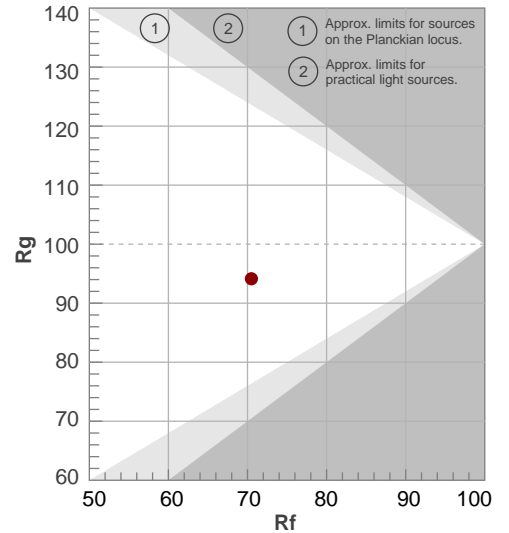
Color temperature	Color rendering index	Red component	Color fidelity	Color gamut	Color quality scale	Television lighting index	Color coordinate cie 1931	Color coordinate cie 1931	Color deviation from black body
CCT	CRI	CRI R9	TM30 Rf	TM30 Rg	CQS	TLCI	x	y	Δuv
6828 K	69,0	-38,6	70,5	94,1	69,1	47	0,307	0,327	0,0019

# TM30 DETAILS

**Rf 70,5**  
Fidelity index Rf

**Rg 94,1**  
Gammut index

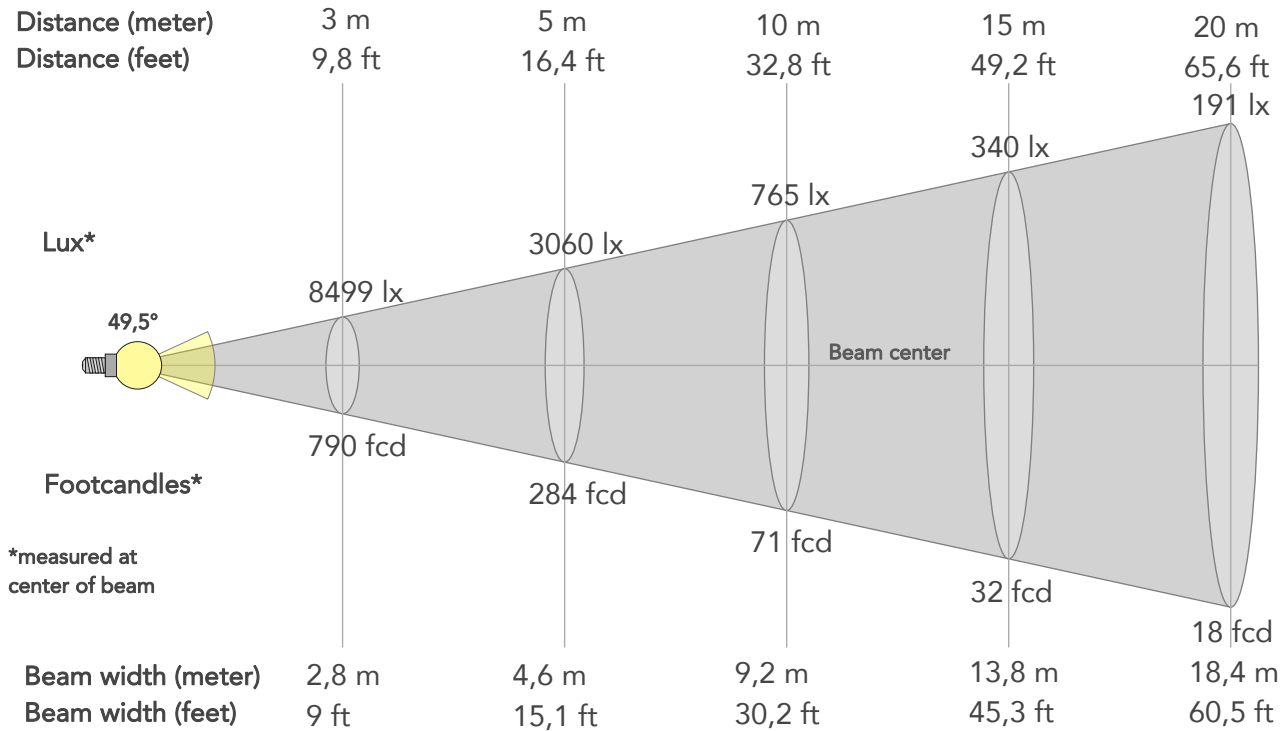
Hue Bin	R <sub>f</sub>	Graphic shifts (%)	
		Chroma	Hue
1	66	-19%	-5%
2	69	-15%	9%
3	63	-8%	22%
4	64	4%	22%
5	71	13%	13%
6	82	11%	-2%
7	89	0%	-8%
8	75	-11%	-11%
9	76	-21%	3%
10	61	-15%	21%
11	49	-5%	28%
12	69	5%	21%
13	79	14%	7%
14	77	17%	-9%
15	69	5%	-24%
16	74	-5%	-15%



# BEAM DETAILS



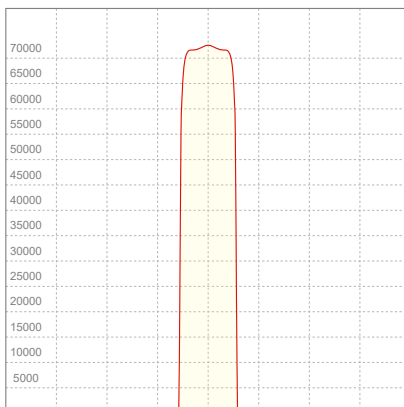
Beam angle 50%	Field angle 10%	Cut off angle 2,5%	Intensity ratio in 120° cone	Intensity ratio in 90° cone
49,5°	51,7°	52,1°	99,9%	99,9%



## BEAM INTENSITIES AND WIDTHS

Distance	1m	2m	3m	4m	5m	7,5m	10m	15m	20m	25m	30m	40m	50m
Distance	3,3ft	6,6ft	9,8ft	13,1ft	16,4ft	24,6ft	32,8ft	49,2ft	65,6ft	82ft	98,4ft	131,2ft	164ft
Lux	76495lx	19124lx	8499lx	4781lx	3060lx	1360lx	765lx	340lx	191lx	122lx	85lx	48lx	31lx
Footcand.	7107fcd	1777fcd	790fcd	444fcd	284fcd	126fcd	71fcd	32fcd	18fcd	11fcd	8fcd	4fcd	3fcd
Beam wid.	0,9m	1,8m	2,8m	3,7m	4,6m	6,9m	9,2m	13,8m	18,4m	23m	27,7m	36,9m	46,1m
Beam wid.	3ft	6,1ft	9ft	12,1ft	15,1ft	22,7ft	30,2ft	45,3ft	60,5ft	75,6ft	90,7ft	120,9ft	151,2ft

## LINEAR DISTRIBUTION DIAGRAM

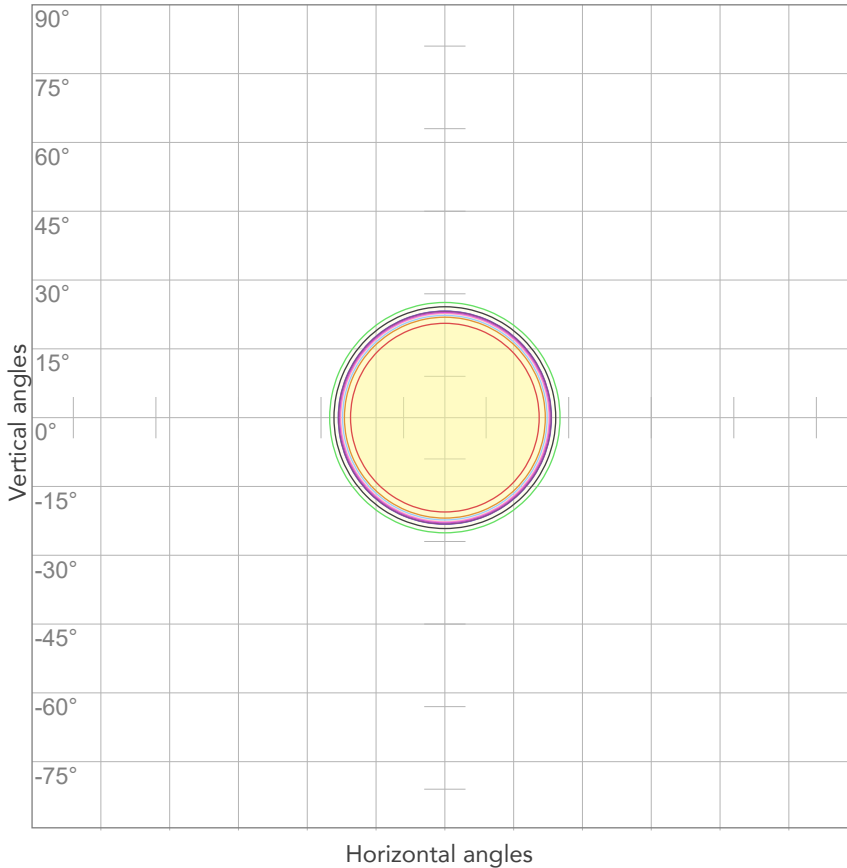


## ELECTRICAL SPECIFICATIONS

Input voltage	Input current	Input power	Power FC	Efficiency
222V	5,54A	1206,7W	0,98	36lm/W

# ISO DIAGRAMS

## ISO CANDELA DIAGRAM



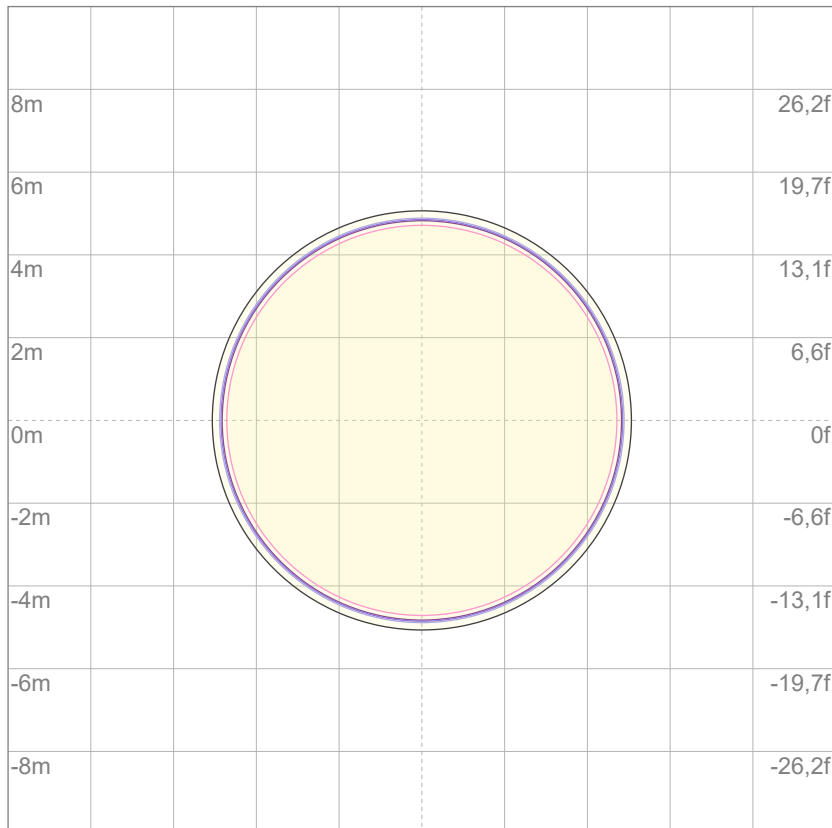
10%	7649 cd
20%	15299 cd
30%	22948 cd
40%	30598 cd
50%	38247 cd
60%	45897 cd
70%	53546 cd
80%	61196 cd

Conditions:

Number of c-planes: 2

Candela at center: 76495 cd

## ISO LUX DIAGRAM



Mounting height: 10 meters (33 feet)

3%	22,9 lx
5%	38,2 lx
10%	76,5 lx
30%	229 lx
50%	382 lx

Conditions:

Number of c-planes: 2

Lux at center: 765 lx

*Lux distribution on a surface when lamp is mounted at 10 meters from the surface.*





Total lumen output:

43150 lm

Peak candela output:

519859 cd

Light quality:

CRI: 68,7

Color temperature:

6779 K

**PRODUCT NAME:**

ASTRAPROFILE900

**MEASURAMENT CONDITIONS:**

Beam angle:

Med Zoom

Target:

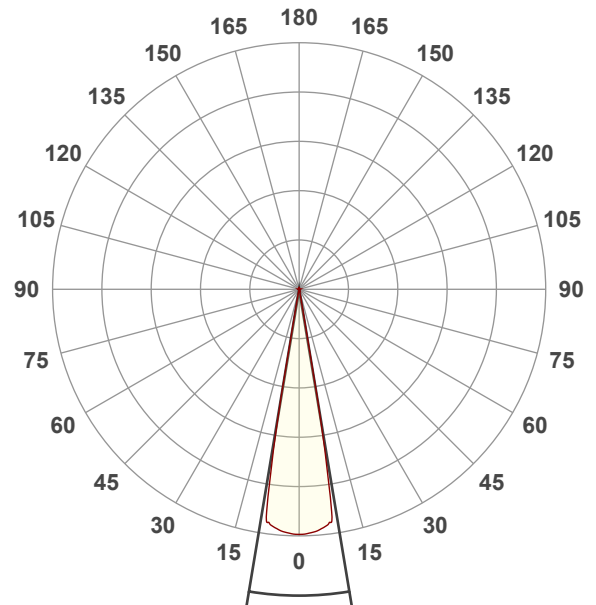
Full On

Operator:

Salvatore Giglio

Date and time:

03/12/2024 16:40:40

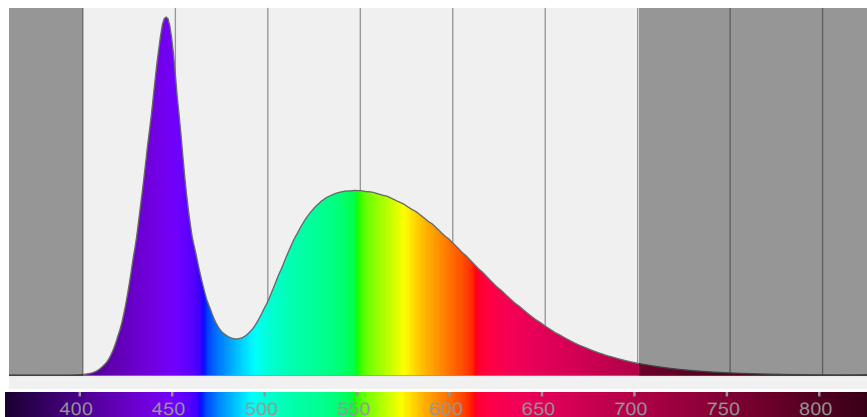


Beam angle 50%: 18,9°

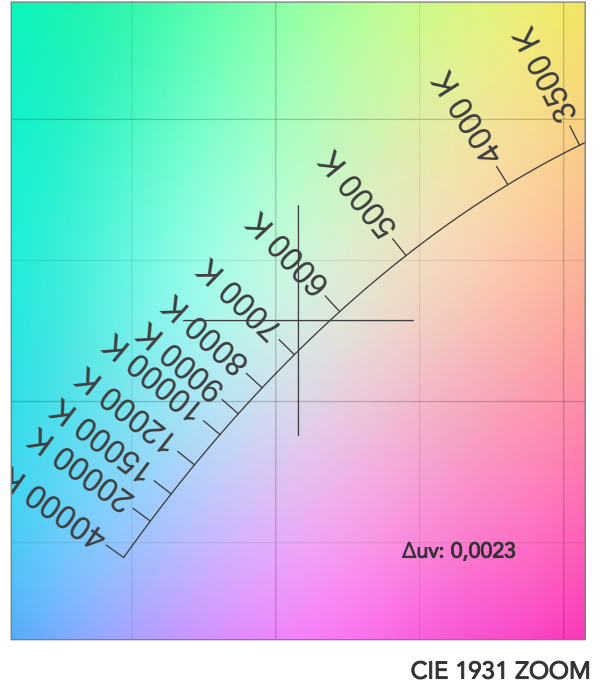
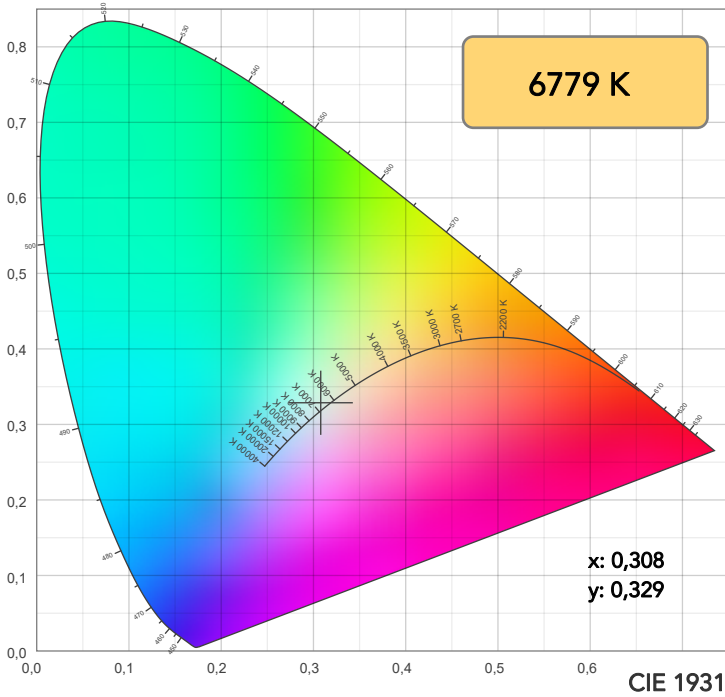
Field angle 10%: 20,5°

Cut off angle 2.5%: 21,8°

Spectra

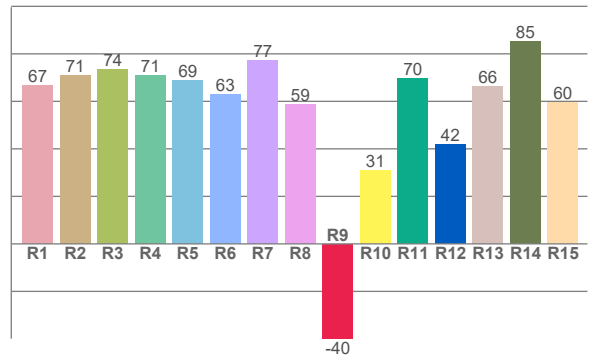
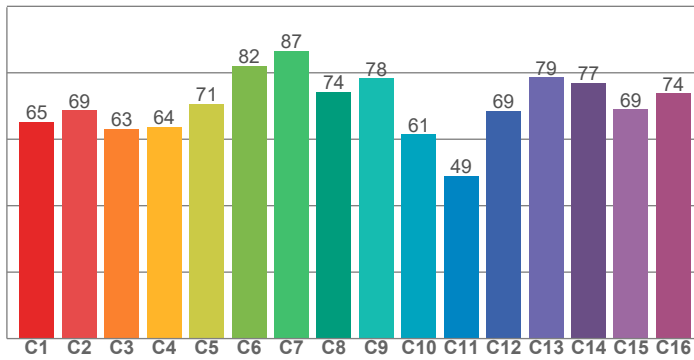


# COLOR DETAILS



TM30: 70,3

CRI: 68,7 (R1-R8)



CRI R values, only R1-R8 are used to calculate final CRI value

R1	R2	R3	R4	R5	R6	R7	R8	R9	R10	R11	R12	R13	R14	R15
66,7	71,0	73,6	70,8	68,8	62,9	77,1	58,7	-39,9	31,1	69,6	41,9	66,4	85,1	59,7

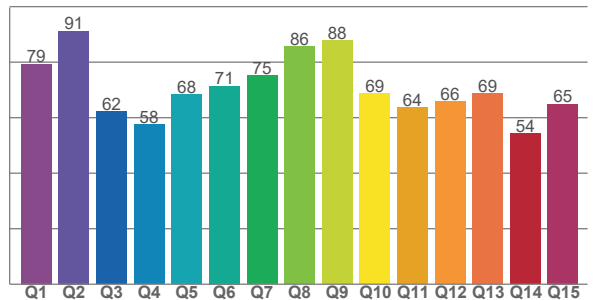
TM30 C values, 16 binned values out of total of 99 C values

C1	C2	C3	C4	C5	C6	C7	C8	C9	C10	C11	C12	C13	C14	C15	C16
65,3	68,8	63,2	63,7	70,7	82,2	86,7	74,3	78,3	61,4	49,1	68,6	78,7	77,0	68,9	73,8

CQS Q values

Q1	Q2	Q3	Q4	Q5	Q6	Q7	Q8	Q9	Q10	Q11	Q12	Q13	Q14	Q15
79,3	91,2	62,2	57,5	68,4	71,3	75,2	85,7	87,8	68,7	63,6	65,7	68,7	54,3	64,9

CQS: 69,1



## COLOR PARAMETERS

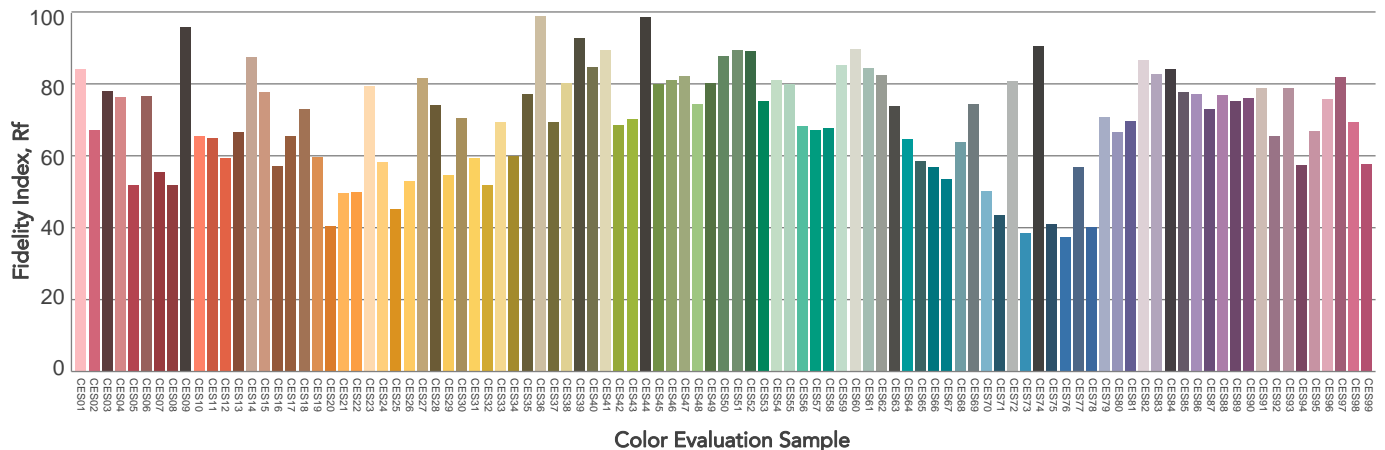
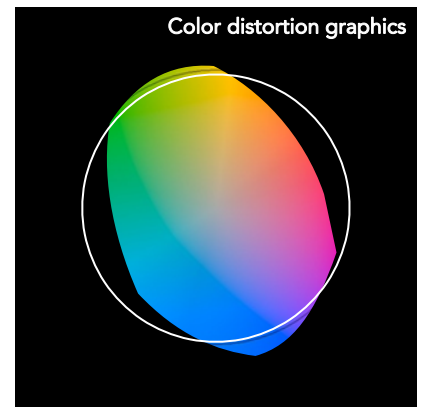
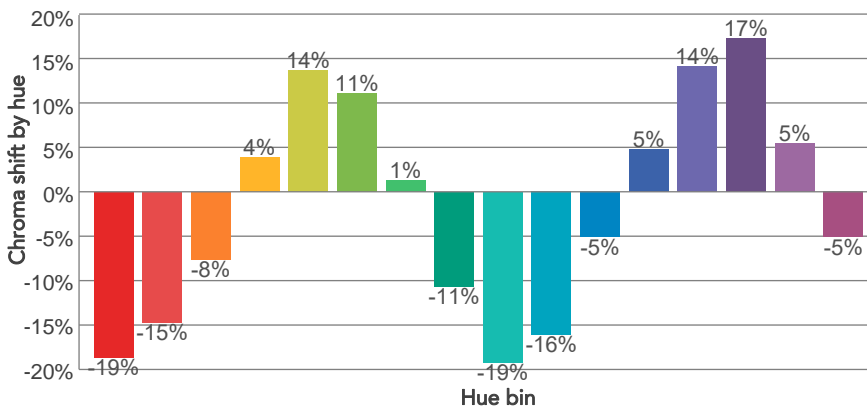
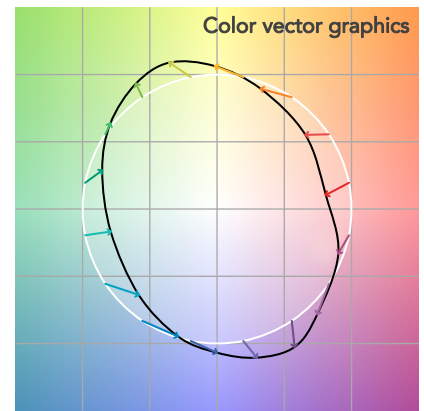
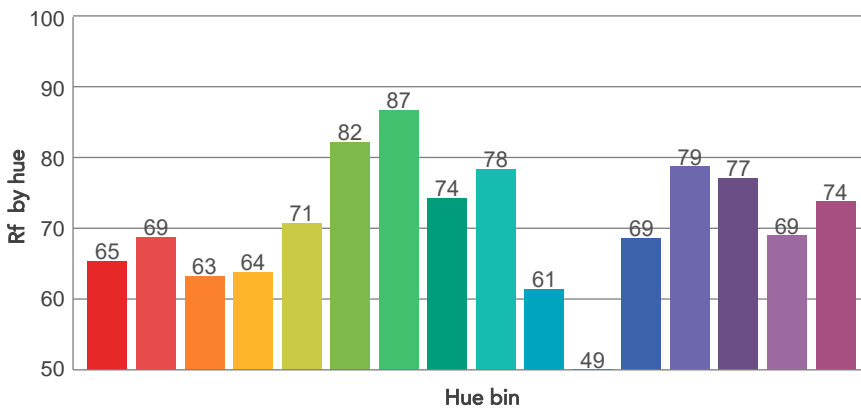
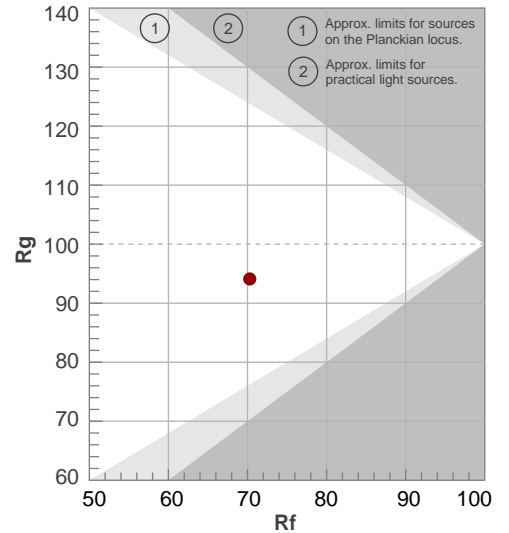
Color temperature	Color rendering index	Red component	Color fidelity	Color gamut	Color quality scale	Television lighting index	Color coordinate cie 1931	Color coordinate cie 1931	Color deviation from black body
CCT	CRI	CRI R9	TM30 Rf	TM30 Rg	CQS	TLCI	x	y	Δuv
6779 K	68,7	-39,9	70,3	94,1	69,1	47	0,308	0,329	0,0023

# TM30 DETAILS

**Rf 70,3**  
Fidelity index Rf

**Rg 94,1**  
Gammut index

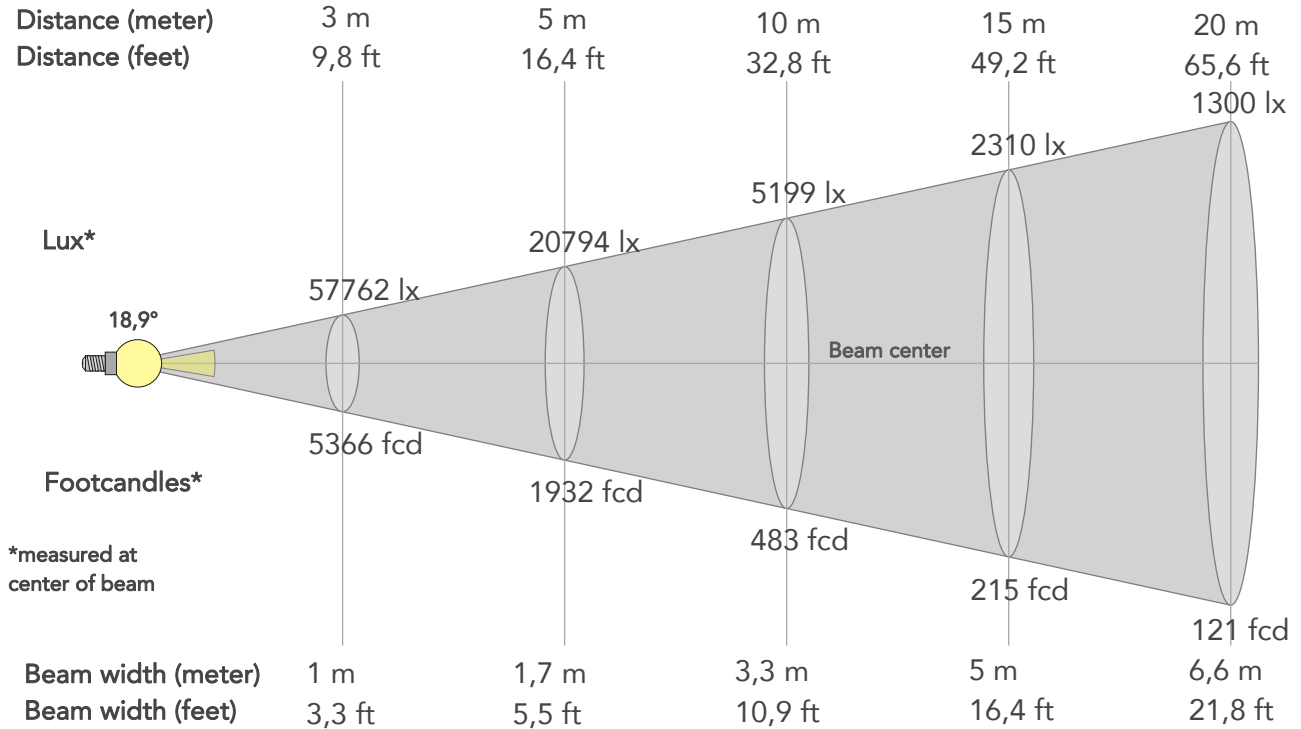
Hue Bin	R <sub>f</sub>	Graphic shifts (%)	
		Chroma	Hue
1	65	-19%	-6%
2	69	-15%	9%
3	63	-8%	23%
4	64	4%	22%
5	71	14%	14%
6	82	11%	-2%
7	87	1%	-9%
8	74	-11%	-12%
9	78	-19%	1%
10	61	-16%	21%
11	49	-5%	28%
12	69	5%	21%
13	79	14%	7%
14	77	17%	-9%
15	69	5%	-24%
16	74	-5%	-15%



# BEAM DETAILS



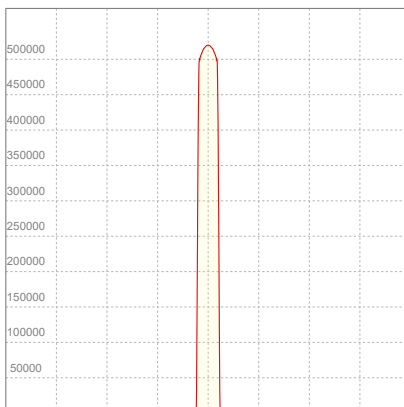
Beam angle 50%	Field angle 10%	Cut off angle 2,5%	Intensity ratio in 120° cone	Intensity ratio in 90° cone
18,9°	20,5°	21,8°	99,8%	99,8%



## BEAM INTENSITIES AND WIDTHS

Distance	1m	2m	3m	4m	5m	7,5m	10m	15m	20m	25m	30m	40m	50m
Distance	3,3ft	6,6ft	9,8ft	13,1ft	16,4ft	24,6ft	32,8ft	49,2ft	65,6ft	82ft	98,4ft	131,2ft	164ft
Lux	519859lx	129965lx	57762lx	32491lx	20794lx	9242lx	5199lx	2310lx	1300lx	832lx	578lx	325lx	208lx
Footcand.	48296fcd	12074fcd	5366fcd	3019fcd	1932fcd	859fcd	483fcd	215fcd	121fcd	77fcd	54fcd	30fcd	19fcd
Beam wid.	0,3m	0,7m	1m	1,3m	1,7m	2,5m	3,3m	5m	6,6m	8,3m	10m	13,3m	16,6m
Beam wid.	1,1ft	2,2ft	3,3ft	4,4ft	5,5ft	8,2ft	10,9ft	16,4ft	21,8ft	27,3ft	32,7ft	43,6ft	54,5ft

## LINEAR DISTRIBUTION DIAGRAM

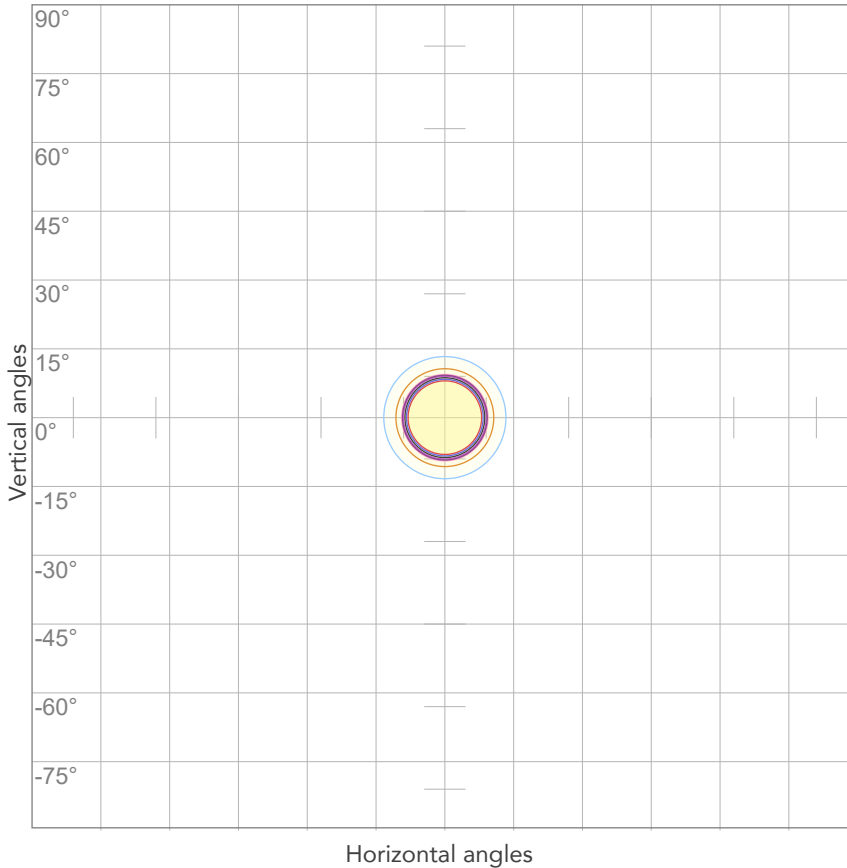


## ELECTRICAL SPECIFICATIONS

Input voltage	Input current	Input power	Power FC	Efficiency
220V	5,63A	1215W	0,98	36lm/W

# ISO DIAGRAMS

## ISO CANDELA DIAGRAM



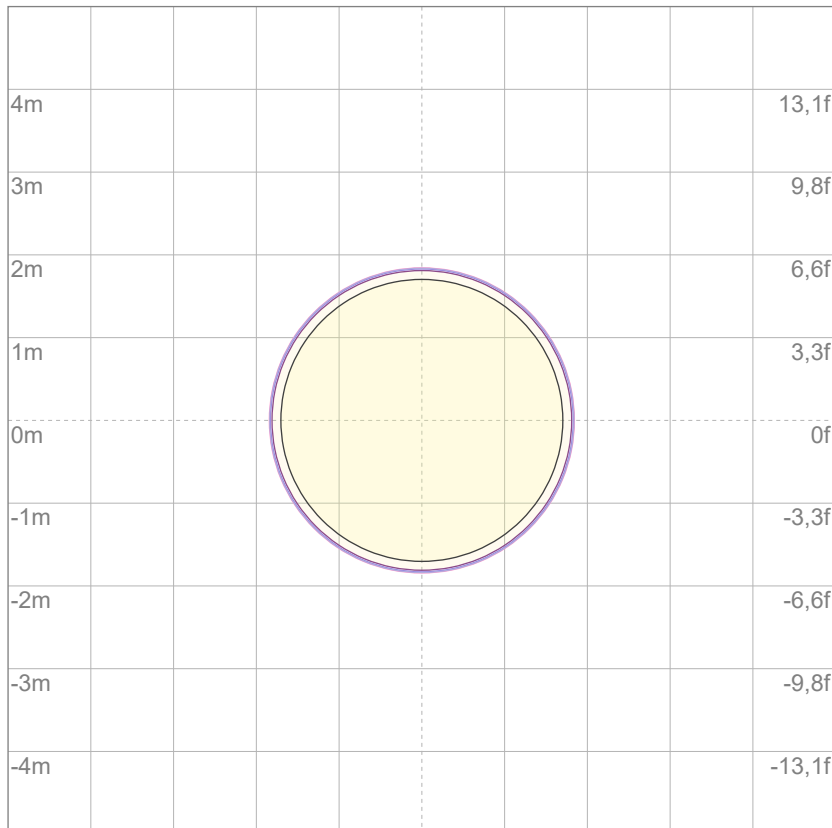
10%	51986 cd
20%	103972 cd
30%	155958 cd
40%	207944 cd
50%	259930 cd
60%	311915 cd
70%	363901 cd
80%	415887 cd

Conditions:

Number of c-planes: 2

Candela at center: 519859 cd

## ISO LUX DIAGRAM



Mounting height: 10 meters (33 feet)

3%	156 lx
5%	260 lx
10%	520 lx
30%	1560 lx
50%	2599 lx

Conditions:

Number of c-planes: 2

Lux at center: 5199 lx

*Lux distribution on a surface when lamp is mounted at 10 meters from the surface.*



Total lumen output:

23816 lm

Peak candela output:

3157597 cd

Light quality:

CRI: 69,3

Color temperature:

6614 K

**PRODUCT NAME:**

ASTRAPROFILE900

**MEASURAMENT CONDITIONS:**

Beam angle:

Min Zoom

Target:

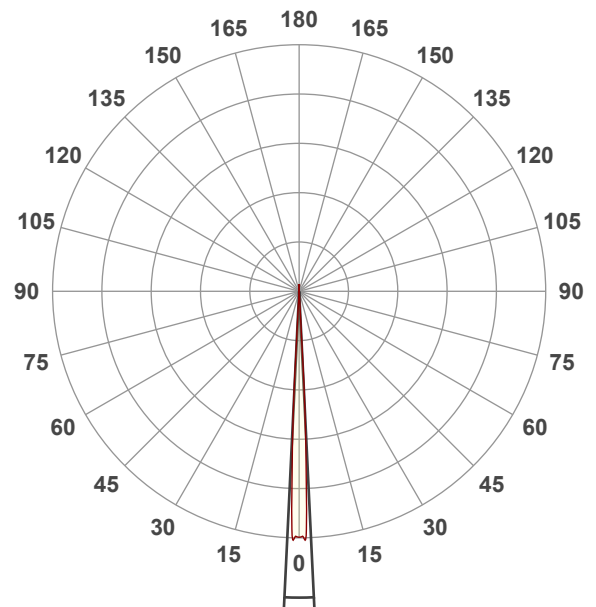
Full On

Operator:

Salvatore Giglio

Date and time:

03/12/2024 15:54:42

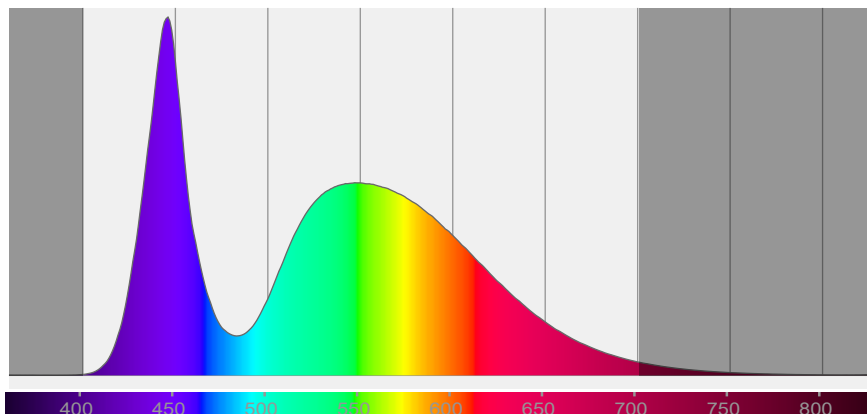


Beam angle 50%: 5,5°

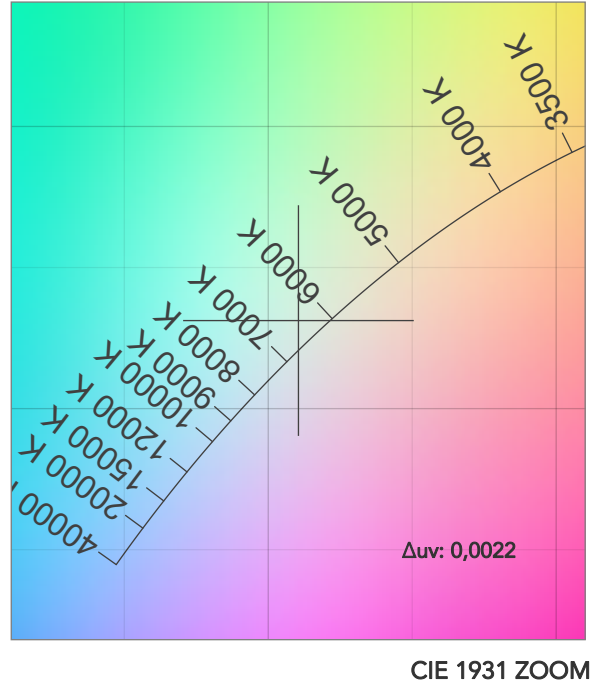
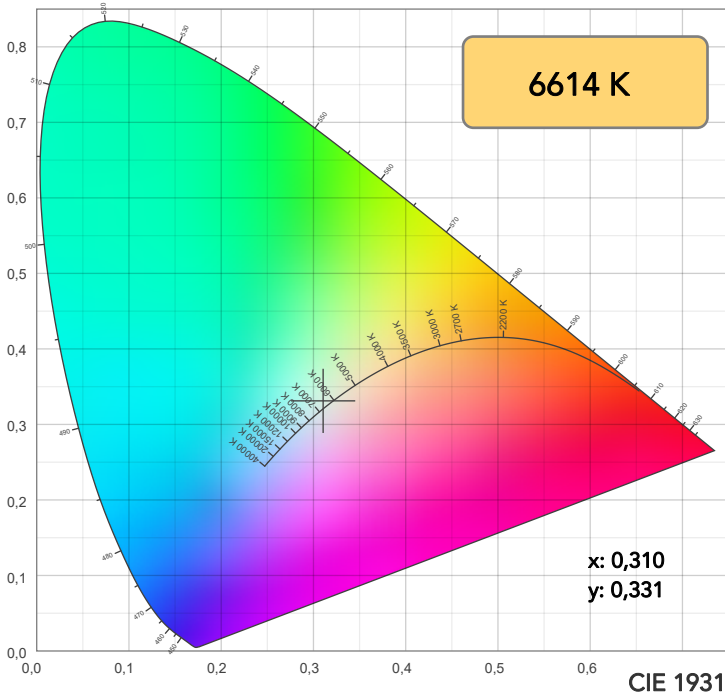
Field angle 10%: 7,2°

Cut off angle 2.5%: 7,5°

Spectra

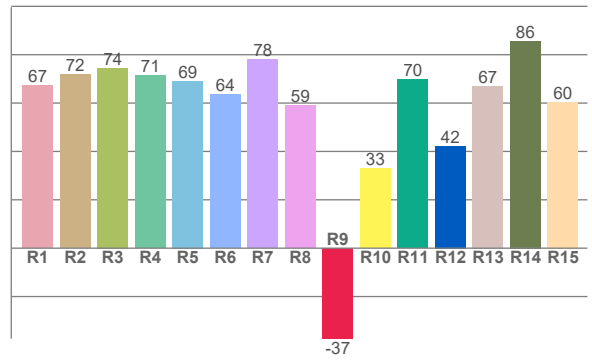
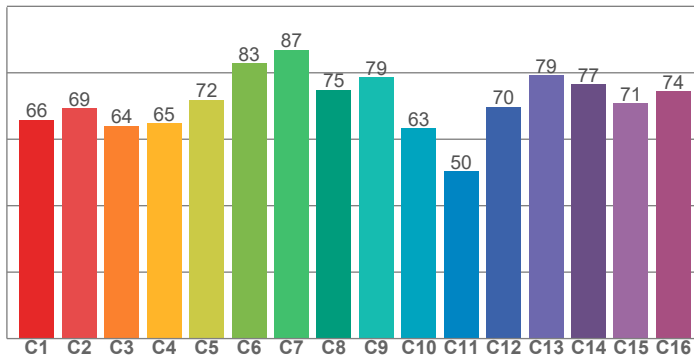


# COLOR DETAILS



TM30: 71,0

CRI: 69,3 (R1-R8)



CRI R values, only R1-R8 are used to calculate final CRI value

R1	R2	R3	R4	R5	R6	R7	R8	R9	R10	R11	R12	R13	R14	R15
67,2	71,9	74,5	71,3	69,1	63,6	77,9	59,1	-37,4	32,9	69,7	42,3	67,1	85,6	60,4

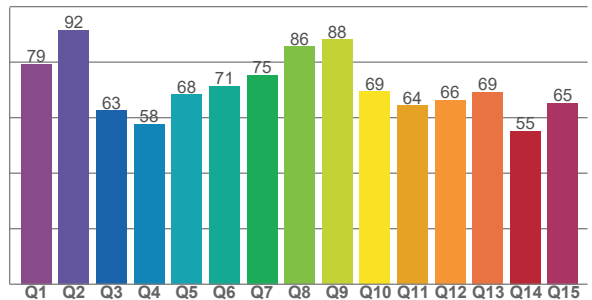
TM30 C values, 16 binned values out of total of 99 C values

C1	C2	C3	C4	C5	C6	C7	C8	C9	C10	C11	C12	C13	C14	C15	C16
65,9	69,3	64,0	64,8	71,8	82,9	86,9	74,9	78,6	63,3	50,4	69,7	79,3	76,5	70,7	74,4

CQS Q values

Q1	Q2	Q3	Q4	Q5	Q6	Q7	Q8	Q9	Q10	Q11	Q12	Q13	Q14	Q15
79,4	91,6	62,5	57,7	68,4	71,4	75,3	85,6	88,2	69,4	64,4	66,4	69,3	55,2	65,3

CQS: 69,5



## COLOR PARAMETERS

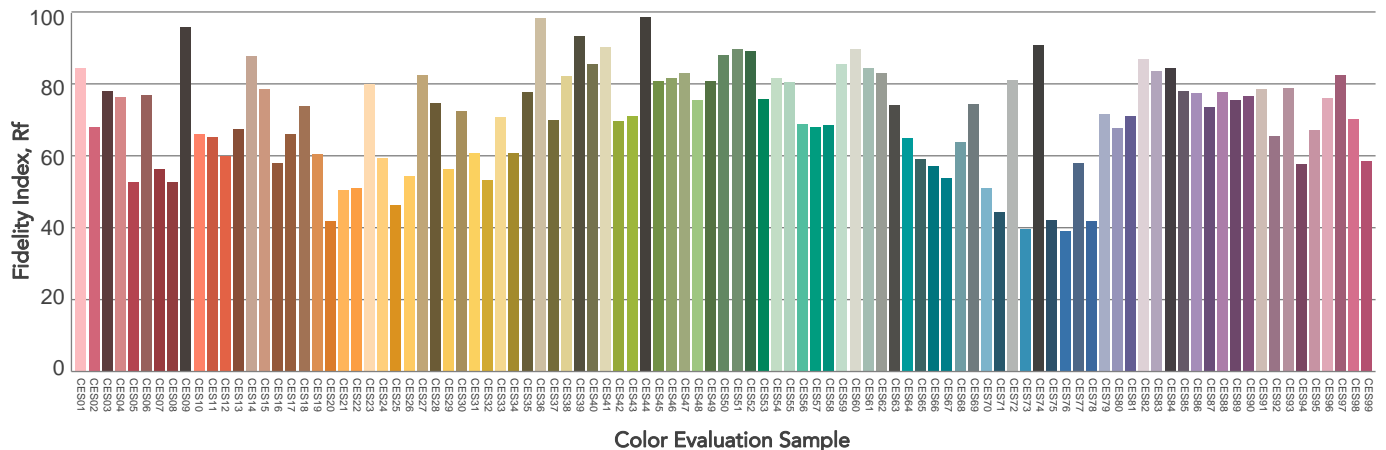
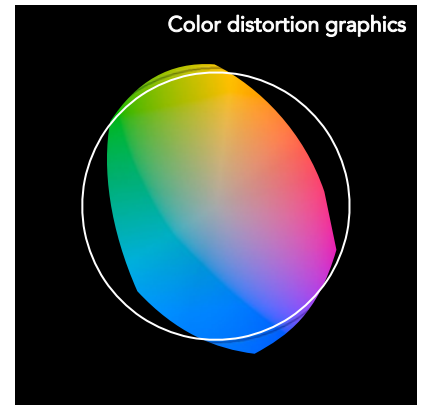
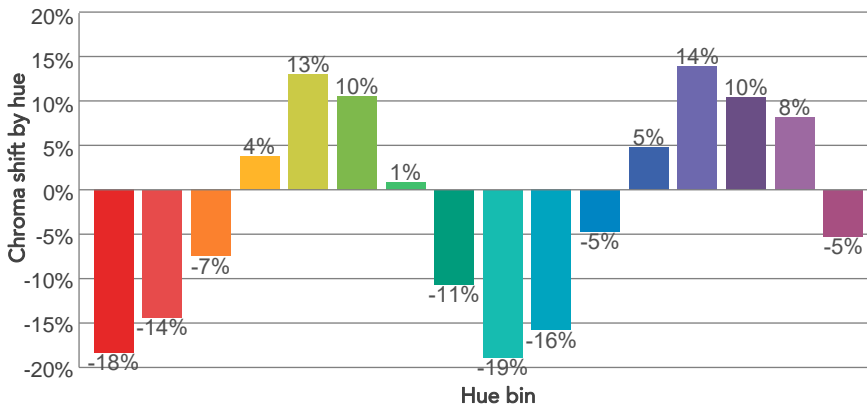
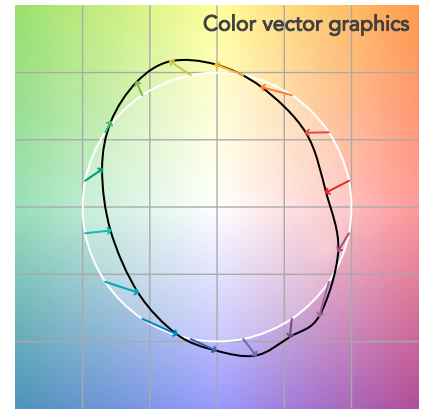
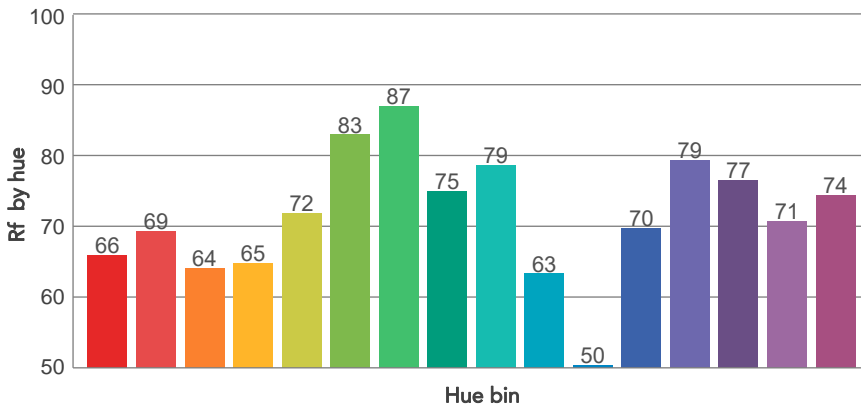
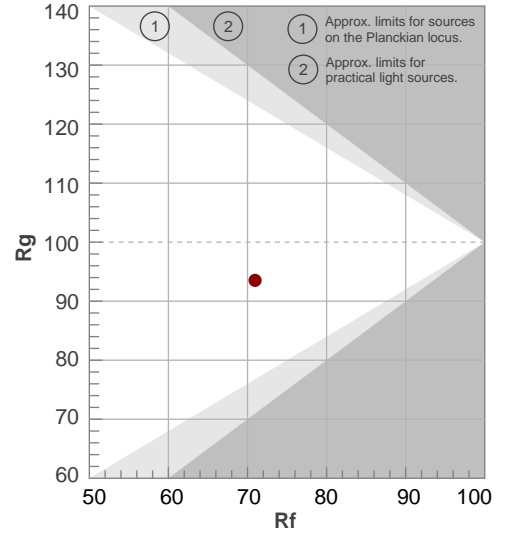
Color temperature	Color rendering index	Red component	Color fidelity	Color gamut	Color quality scale	Television lighting index	Color coordinate cie 1931	Color coordinate cie 1931	Color deviation from black body
CCT	CRI	CRI R9	TM30 Rf	TM30 Rg	CQS	TLCI	x	y	Δuv
6614 K	69,3	-37,4	71,0	93,5	69,5	48	0,310	0,331	0,0022

# TM30 DETAILS

**Rf 71,0**  
Fidelity index Rf

**Rg 93,5**  
Gammut index

Hue Bin	R <sub>f</sub>	Graphic shifts (%)	
		Chroma	Hue
1	66	-18%	-5%
2	69	-14%	9%
3	64	-7%	22%
4	65	4%	22%
5	72	13%	13%
6	83	10%	-2%
7	87	1%	-9%
8	75	-11%	-11%
9	79	-19%	2%
10	63	-16%	20%
11	50	-5%	28%
12	70	5%	20%
13	79	14%	7%
14	77	10%	-9%
15	71	8%	-25%
16	74	-5%	-14%

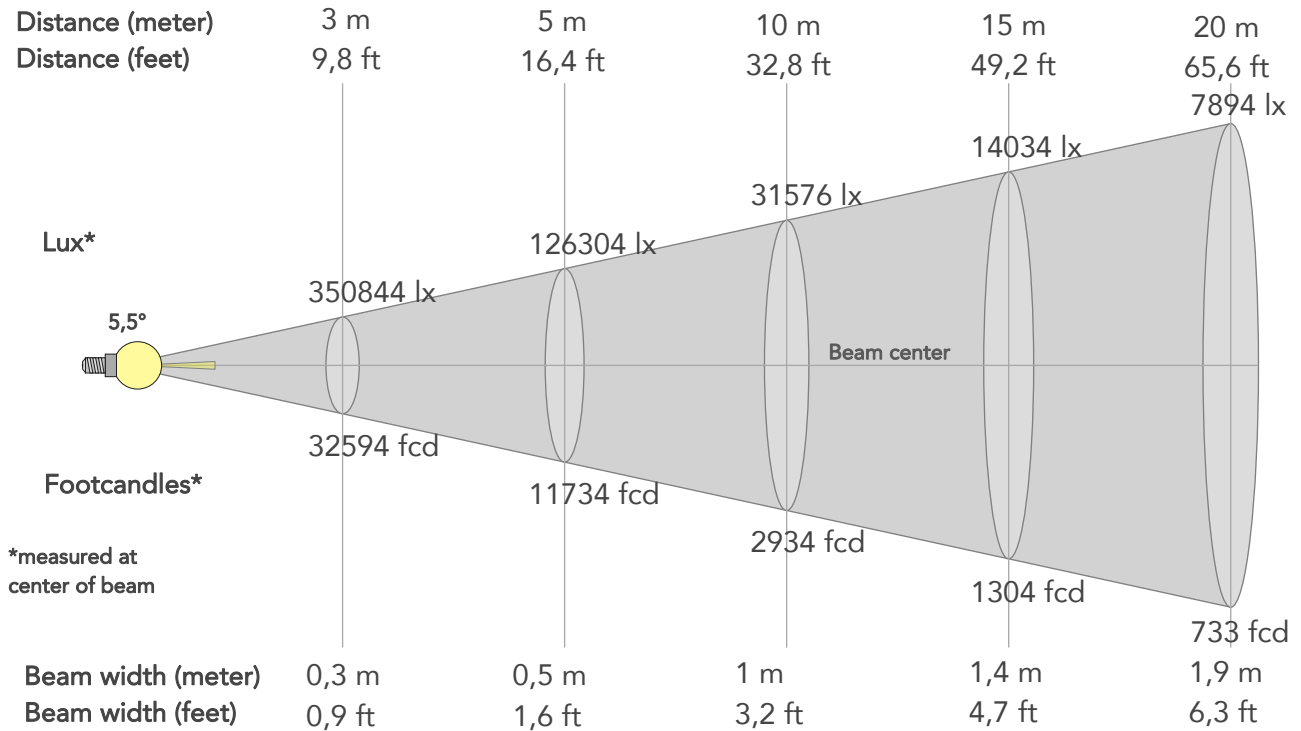




# BEAM DETAILS



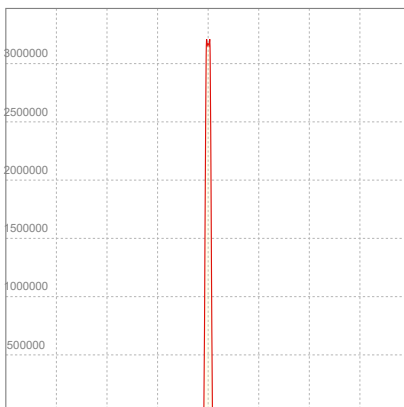
Beam angle 50%	Field angle 10%	Cut off angle 2,5%	Intensity ratio in 120° cone	Intensity ratio in 90° cone
5,5°	7,2°	7,5°	100,0%	100,0%



## BEAM INTENSITIES AND WIDTHS

Distance	1m	2m	3m	4m	5m	7,5m	10m	15m	20m	25m	30m	40m	50m
Distance	3,3ft	6,6ft	9,8ft	13,1ft	16,4ft	24,6ft	32,8ft	49,2ft	65,6ft	82ft	98,4ft	131,2ft	164ft
Lux	3157596lx	789399lx	350844lx	197350lx	126304lx	56135lx	31576lx	14034lx	7894lx	5052lx	3508lx	1973lx	1263lx
Footcand.	293350fcd	73338fcd	32594fcd	18334fcd	11734fcd	5215fcd	2934fcd	1304fcd	733fcd	469fcd	326fcd	183fcd	117fcd
Beam wid.	0,1m	0,2m	0,3m	0,4m	0,5m	0,7m	1m	1,4m	1,9m	2,4m	2,9m	3,8m	4,8m
Beam wid.	0,3ft	0,6ft	0,9ft	1,3ft	1,6ft	2,4ft	3,2ft	4,7ft	6,3ft	7,9ft	9,5ft	12,6ft	15,8ft

## LINEAR DISTRIBUTION DIAGRAM

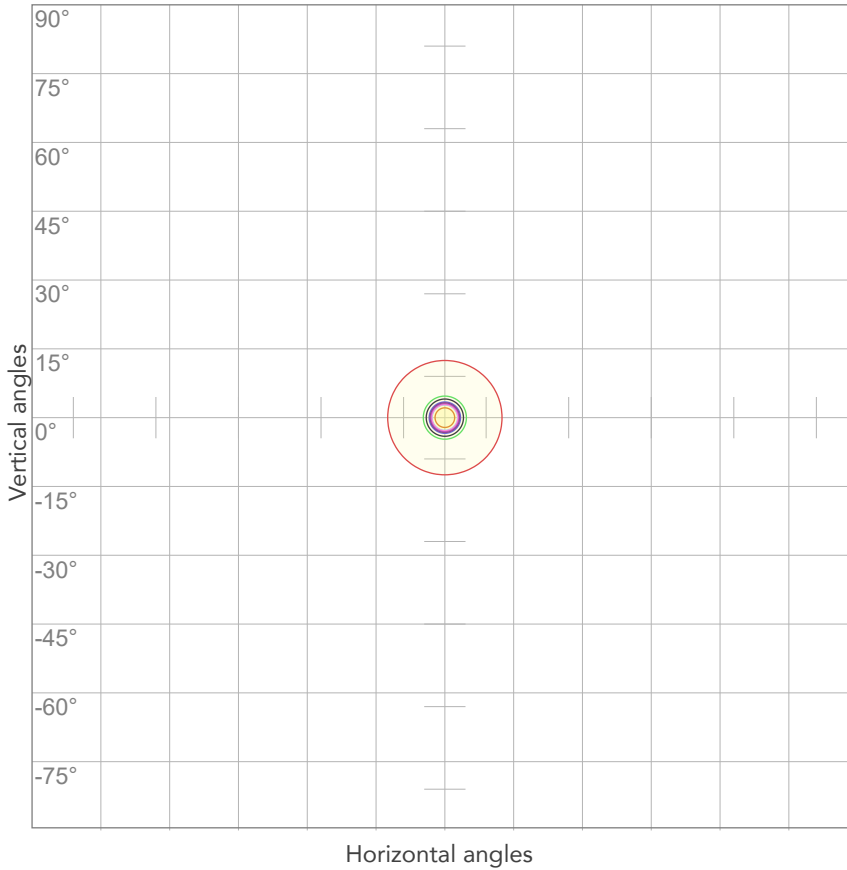


## ELECTRICAL SPECIFICATIONS

Input voltage	Input current	Input power	Power FC	Efficiency
221V	5,56A	1207,2W	0,98	20lm/W

# ISO DIAGRAMS

## ISO CANDELA DIAGRAM



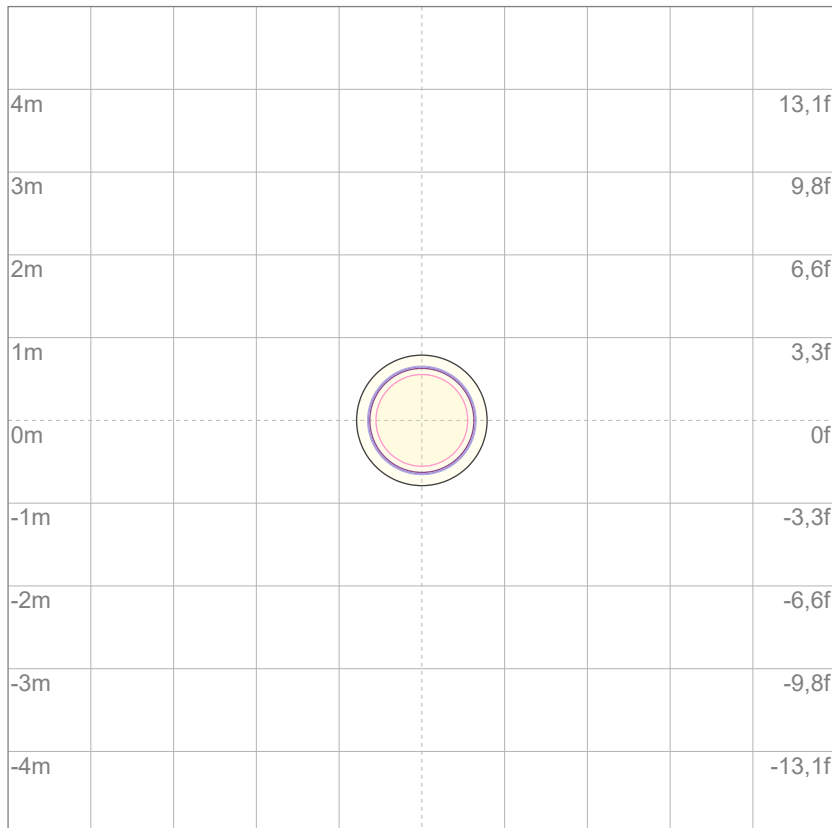
10%	315760 cd
20%	631519 cd
30%	947279 cd
40%	1263039 cd
50%	1578798 cd
60%	1894558 cd
70%	2210317 cd
80%	2526077 cd

Conditions:

Number of c-planes: 2

Candela at center: 3157596 cd

## ISO LUX DIAGRAM



3%	947 lx
5%	1579 lx
10%	3158 lx
30%	9473 lx
50%	15,8K lx

Conditions:

Number of c-planes: 2

Lux at center: 31,6K lx

*Lux distribution on a surface when lamp is mounted at 10 meters from the surface.*

Mounting height: 10 meters (33 feet)



Total lumen output:

17588 lm

Peak candela output:

31494 cd

Light quality:

CRI: 66,7

Color temperature:

3211 K

**PRODUCT NAME:**

ASTRAPROFILE900

**MEASURAMENT CONDITIONS:**

Beam angle:

Max Zoom

Target:

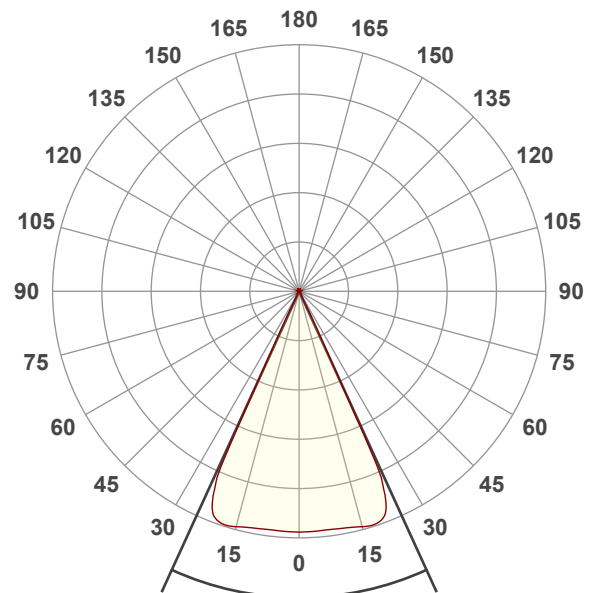
Full On - CTO

Operator:

Salvatore Giglio

Date and time:

13/12/2024 12:32:05

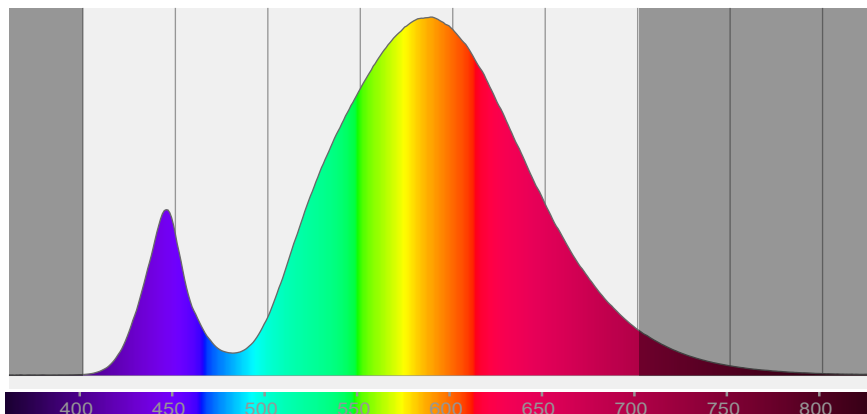


Beam angle 50%: 49,1°

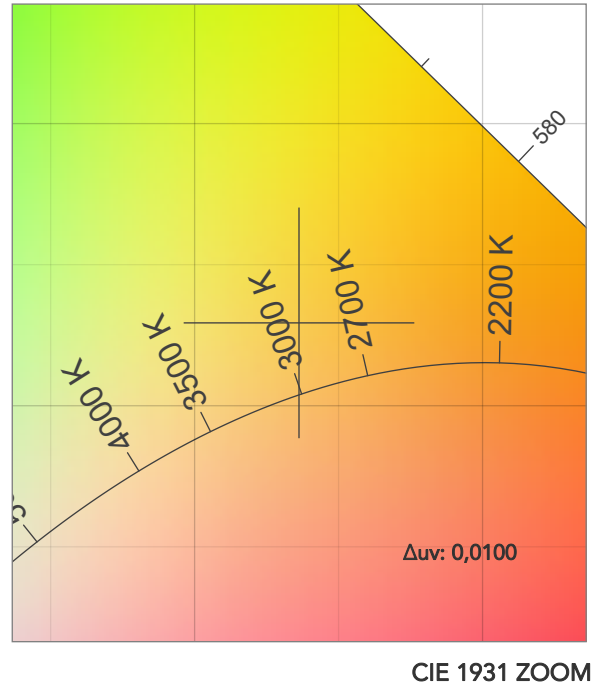
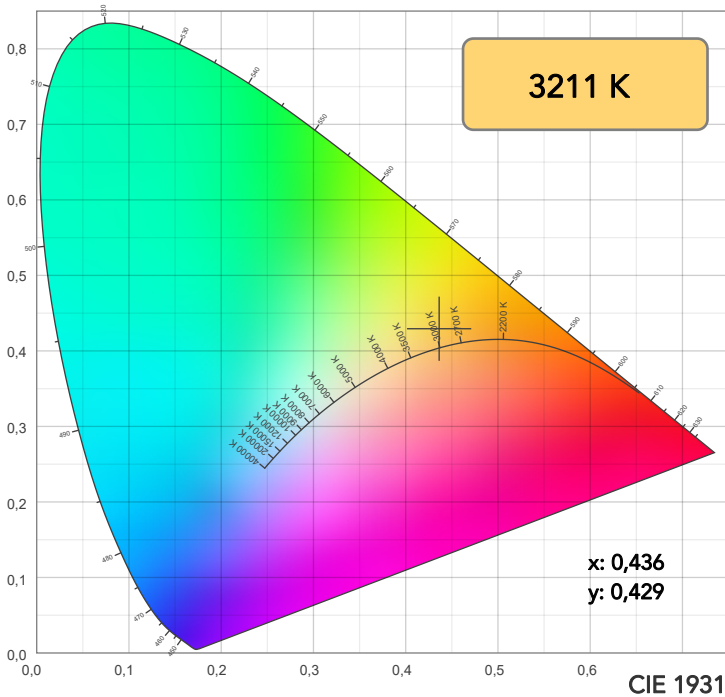
Field angle 10%: 51,2°

Cut off angle 2.5%: 52°

Spectra

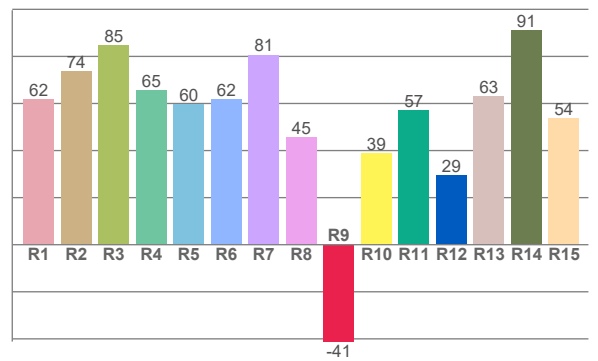
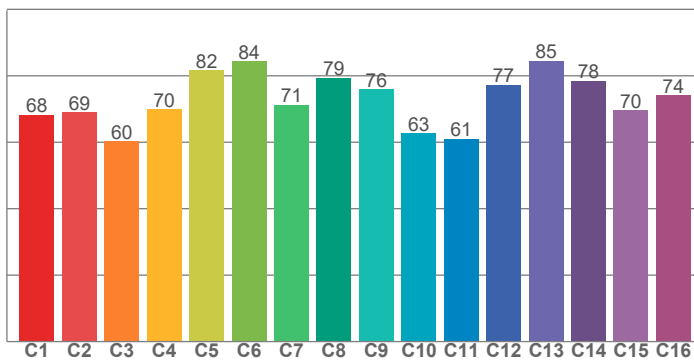


# COLOR DETAILS



TM30: 72,4

CRI: 66,7 (R1-R8)



CRI R values, only R1-R8 are used to calculate final CRI value

R1	R2	R3	R4	R5	R6	R7	R8	R9	R10	R11	R12	R13	R14	R15
62,0	73,8	84,8	65,5	59,6	61,8	80,7	45,5	-41,2	39,0	57,0	29,3	63,2	91,0	53,7

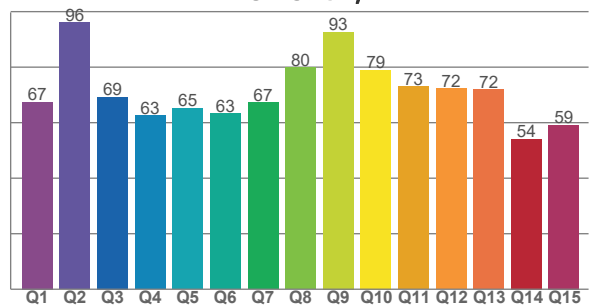
TM30 C values, 16 binned values out of total of 99 C values

C1	C2	C3	C4	C5	C6	C7	C8	C9	C10	C11	C12	C13	C14	C15	C16
68,2	68,9	60,3	70,0	81,7	84,4	71,3	79,4	75,9	62,8	61,1	77,3	84,5	78,5	69,6	74,2

CQS Q values

Q1	Q2	Q3	Q4	Q5	Q6	Q7	Q8	Q9	Q10	Q11	Q12	Q13	Q14	Q15
67,4	96,1	69,3	62,5	65,2	63,2	67,3	80,0	92,7	78,9	73,0	72,3	71,9	54,2	59,2

CQS: 69,4



## COLOR PARAMETERS

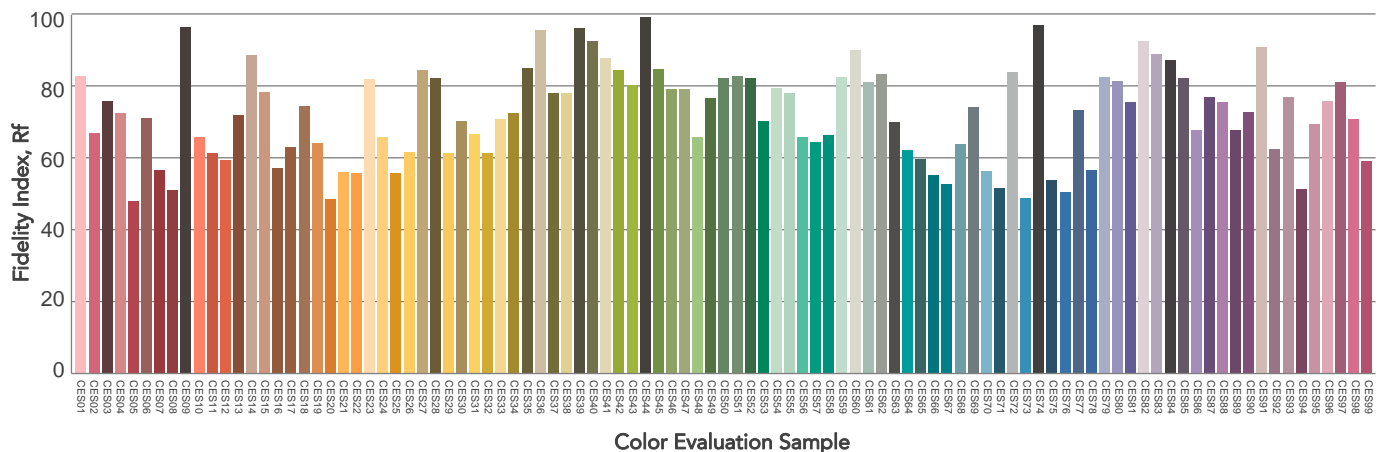
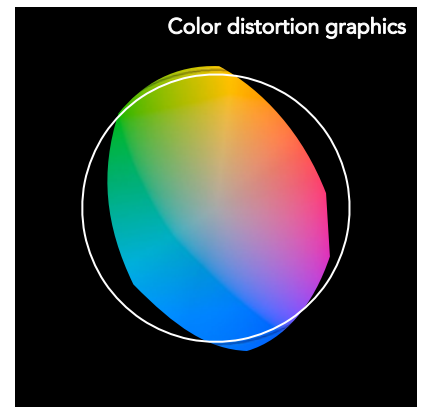
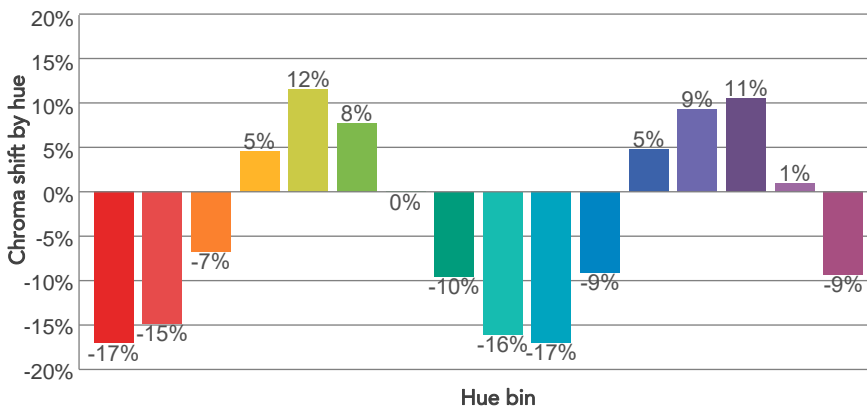
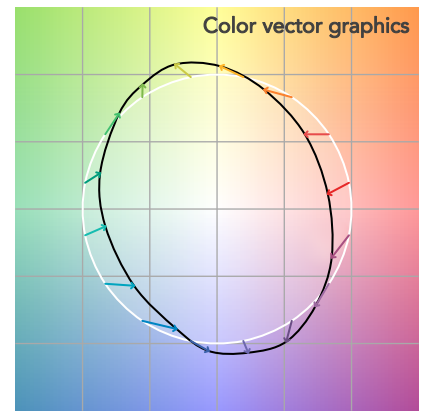
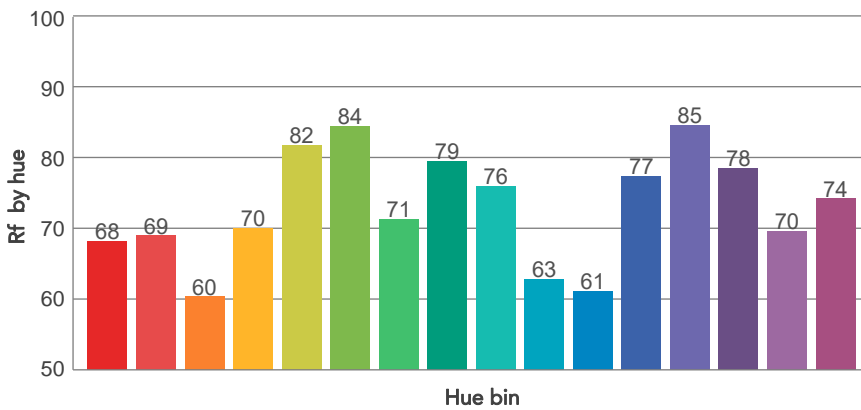
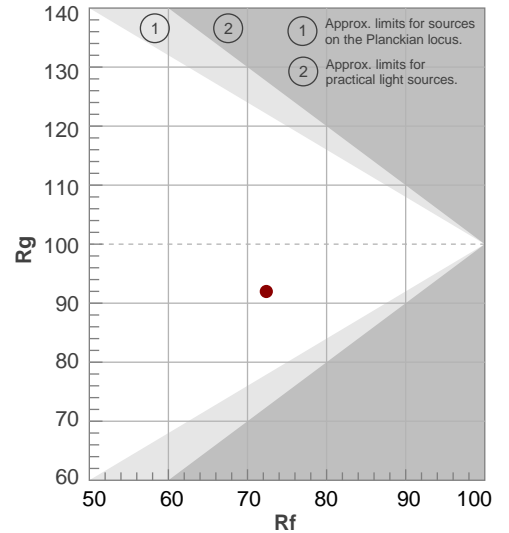
Color temperature	Color rendering index	Red component	Color fidelity	Color gamut	Color quality scale	Television lighting index	Color coordinate cie 1931	Color coordinate cie 1931	Color deviation from black body
CCT	CRI	CRI R9	TM30 Rf	TM30 Rg	CQS	TLCI	x	y	Δuv
3211 K	66,7	-41,2	72,4	92,0	69,4	43	0,436	0,429	0,0100

# TM30 DETAILS

**Rf 72,4**  
Fidelity index Rf

**Rg 92,0**  
Gammut index

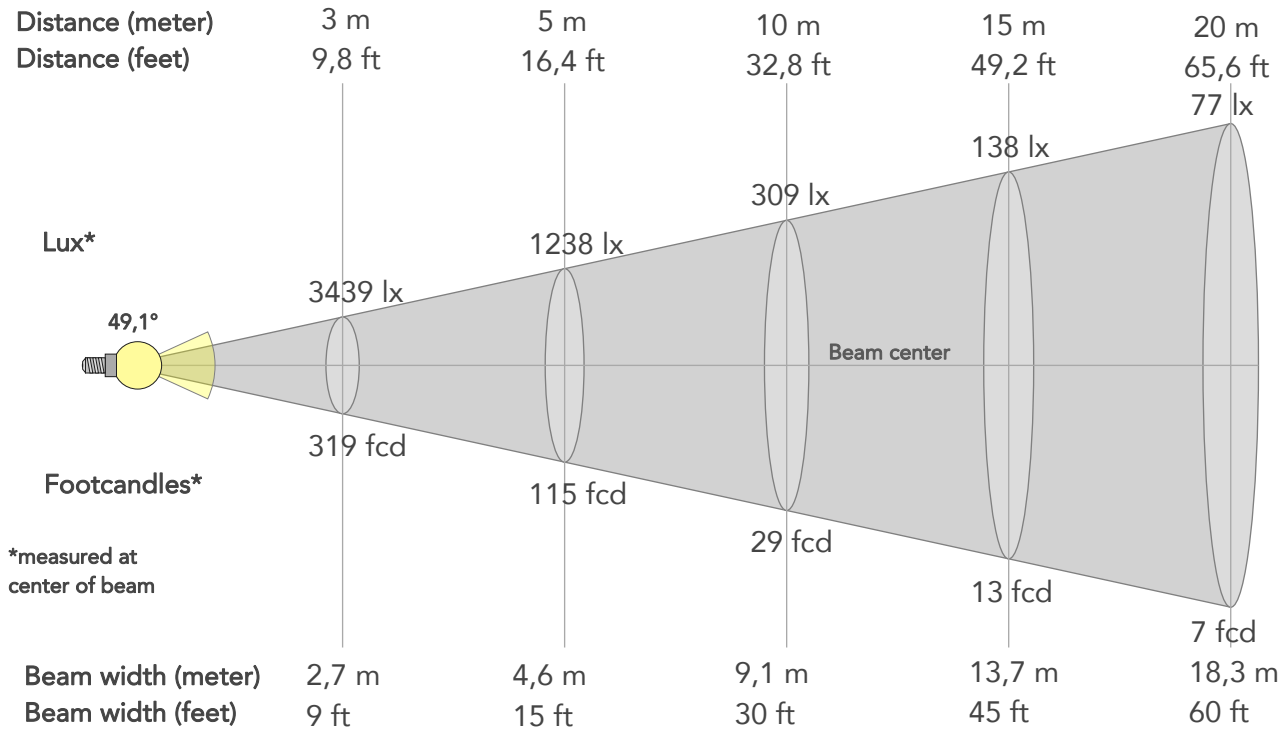
Hue Bin	R <sub>f</sub>	Graphic shifts (%)	
		Chroma	Hue
1	68	-17%	-5%
2	69	-15%	10%
3	60	-7%	20%
4	70	5%	18%
5	82	12%	10%
6	84	8%	-5%
7	71	0%	-18%
8	79	-10%	-9%
9	76	-16%	-4%
10	63	-17%	13%
11	61	-9%	24%
12	77	5%	15%
13	85	9%	2%
14	78	11%	-12%
15	70	1%	-19%
16	74	-9%	-19%



# BEAM DETAILS



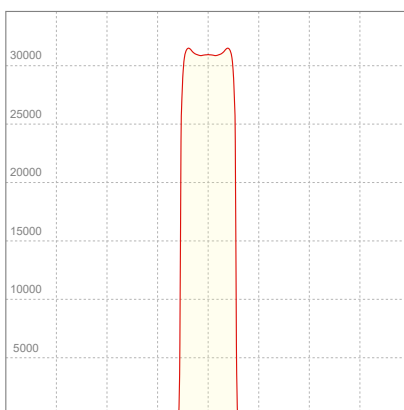
Beam angle 50%	Field angle 10%	Cut off angle 2,5%	Intensity ratio in 120° cone	Intensity ratio in 90° cone
49,1°	51,2°	52°	99,8%	99,8%



## BEAM INTENSITIES AND WIDTHS

Distance	1m	2m	3m	4m	5m	7,5m	10m	15m	20m	25m	30m	40m	50m
Distance	3,3ft	6,6ft	9,8ft	13,1ft	16,4ft	24,6ft	32,8ft	49,2ft	65,6ft	82ft	98,4ft	131,2ft	164ft
Lux	30948lx	7737lx	3439lx	1934lx	1238lx	550lx	309lx	138lx	77lx	50lx	34lx	19lx	12lx
Footcand.	2875fcd	719fcd	319fcd	180fcd	115fcd	51fcd	29fcd	13fcd	7fcd	5fcd	3fcd	2fcd	1fcd
Beam wid.	0,9m	1,8m	2,7m	3,7m	4,6m	6,9m	9,1m	13,7m	18,3m	22,9m	27,4m	36,6m	45,7m
Beam wid.	3ft	6ft	9ft	12ft	15ft	22,5ft	30ft	45ft	60ft	75ft	90ft	120ft	149,9ft

## LINEAR DISTRIBUTION DIAGRAM

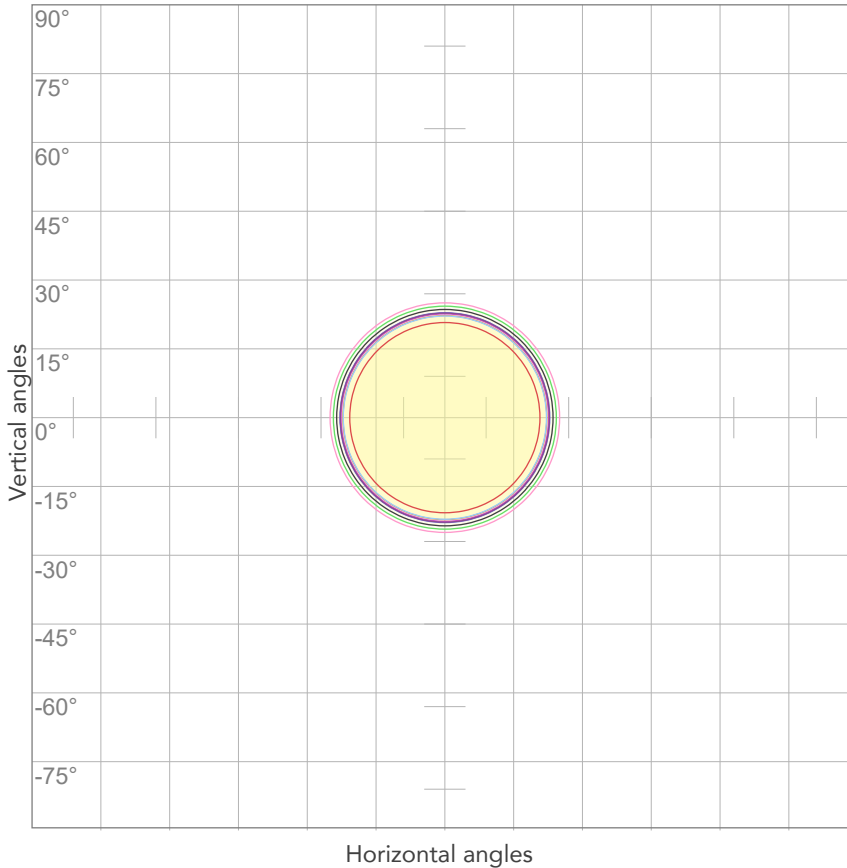


## ELECTRICAL SPECIFICATIONS

Input voltage	Input current	Input power	Power FC	Efficiency
221V	5,66A	1226,8W	0,98	14lm/W

# ISO DIAGRAMS

## ISO CANDELA DIAGRAM



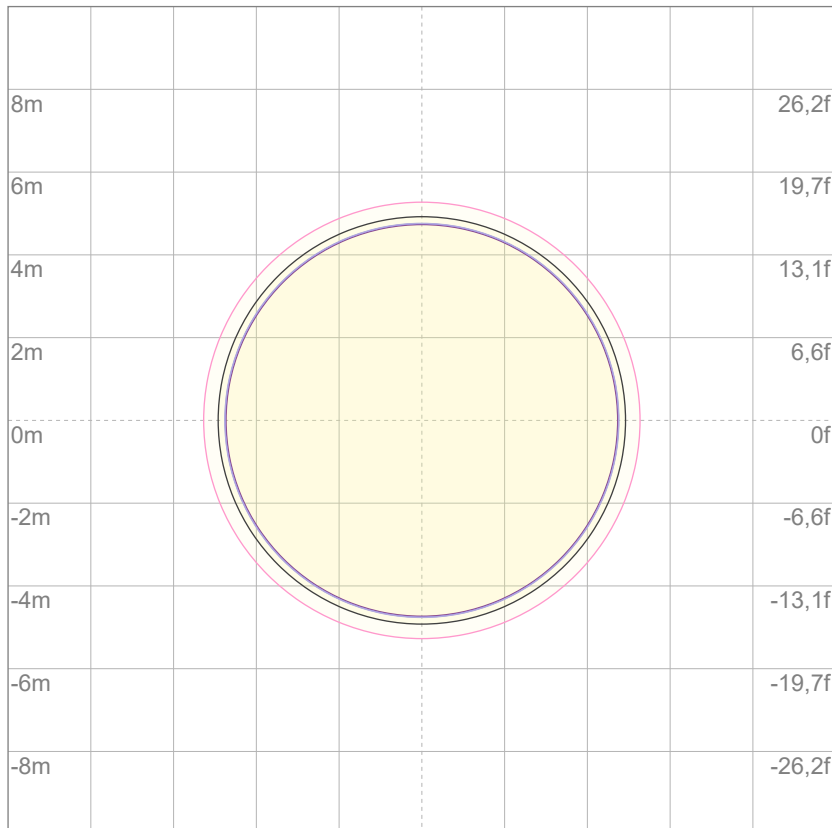
10%	3095 cd
20%	6190 cd
30%	9284 cd
40%	12379 cd
50%	15474 cd
60%	18569 cd
70%	21664 cd
80%	24759 cd

Conditions:

Number of c-planes: 2

Candela at center: 30948 cd

## ISO LUX DIAGRAM



3%	9,28 lx
5%	15,5 lx
10%	30,9 lx
30%	92,8 lx
50%	155 lx

Conditions:

Number of c-planes: 2

Lux at center: 309 lx

*Lux distribution on a surface when lamp is mounted at 10 meters from the surface.*

Mounting height: 10 meters (33 feet)



Total lumen output:

17701 lm

Peak candela output:

208870 cd

Light quality:

CRI: 66,9

Color temperature:

3214 K

**PRODUCT NAME:**

ASTRAPROFILE900

**MEASURAMENT CONDITIONS:**

Beam angle:

Med Zoom

Target:

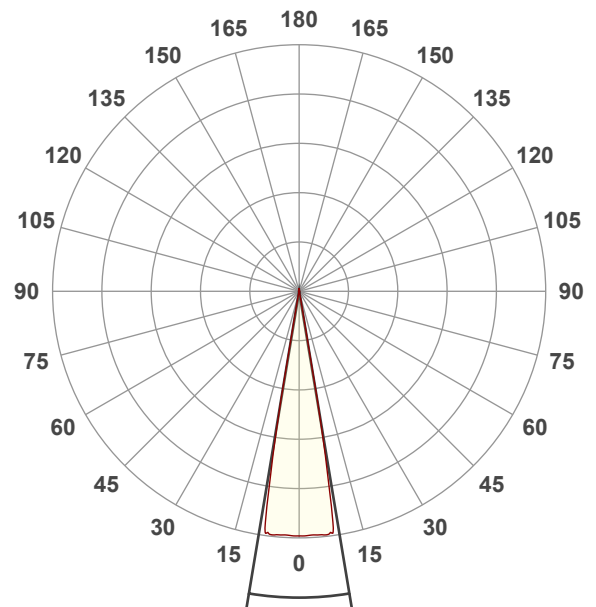
Full On + CTO

Operator:

Salvatore Giglio

Date and time:

03/12/2024 16:59:43

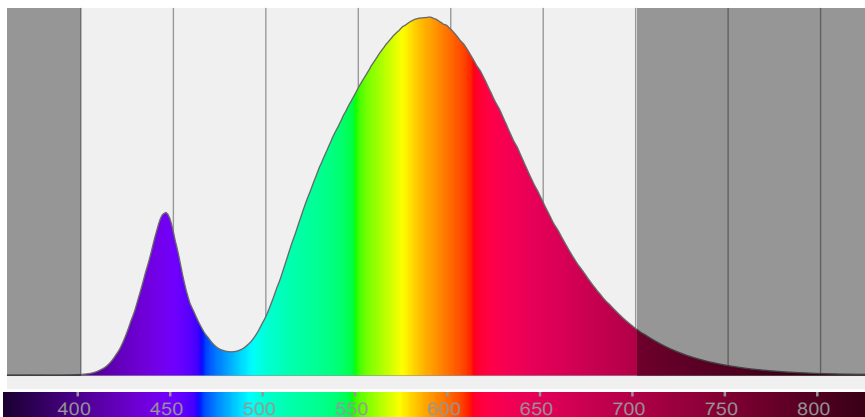


Beam angle 50%: 18,9°

Field angle 10%: 20,5°

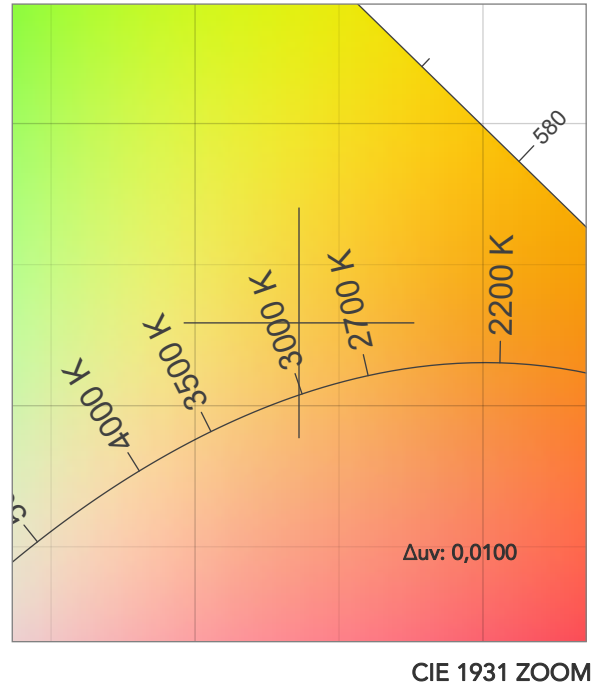
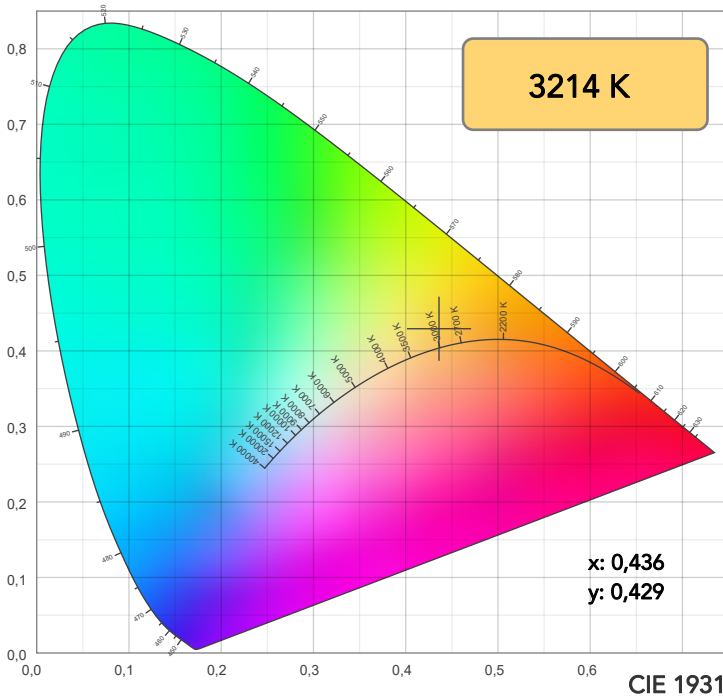
Cut off angle 2.5%: 21,8°

Spectra



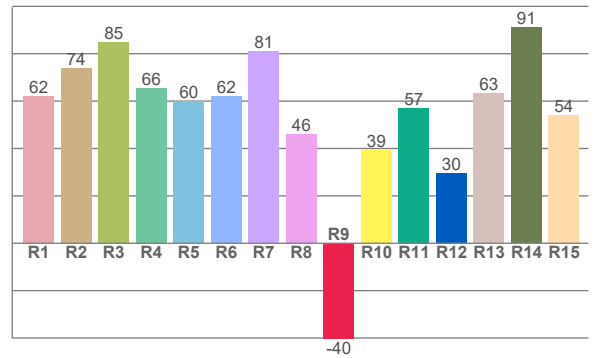
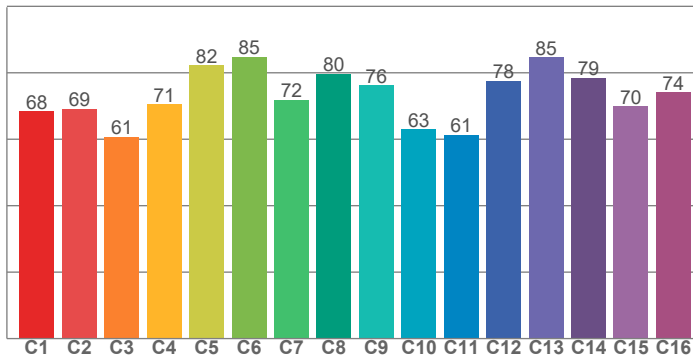


# COLOR DETAILS



TM30: 72,7

CRI: 66,9 (R1-R8)



CRI R values, only R1-R8 are used to calculate final CRI value

R1	R2	R3	R4	R5	R6	R7	R8	R9	R10	R11	R12	R13	R14	R15
62,2	74,0	84,9	65,6	59,8	62,1	81,0	45,8	-40,2	39,4	57,1	29,6	63,4	91,1	54,0

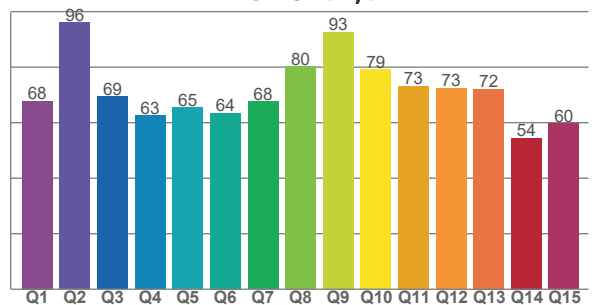
TM30 C values, 16 binned values out of total of 99 C values

C1	C2	C3	C4	C5	C6	C7	C8	C9	C10	C11	C12	C13	C14	C15	C16
68,5	69,2	60,8	70,6	82,3	84,8	71,9	79,7	76,2	62,9	61,3	77,6	84,7	78,6	69,9	74,2

CQS Q values

Q1	Q2	Q3	Q4	Q5	Q6	Q7	Q8	Q9	Q10	Q11	Q12	Q13	Q14	Q15
67,8	96,1	69,4	62,6	65,4	63,5	67,6	80,1	92,7	79,1	73,2	72,5	72,0	54,5	59,6

CQS: 69,6



## COLOR PARAMETERS

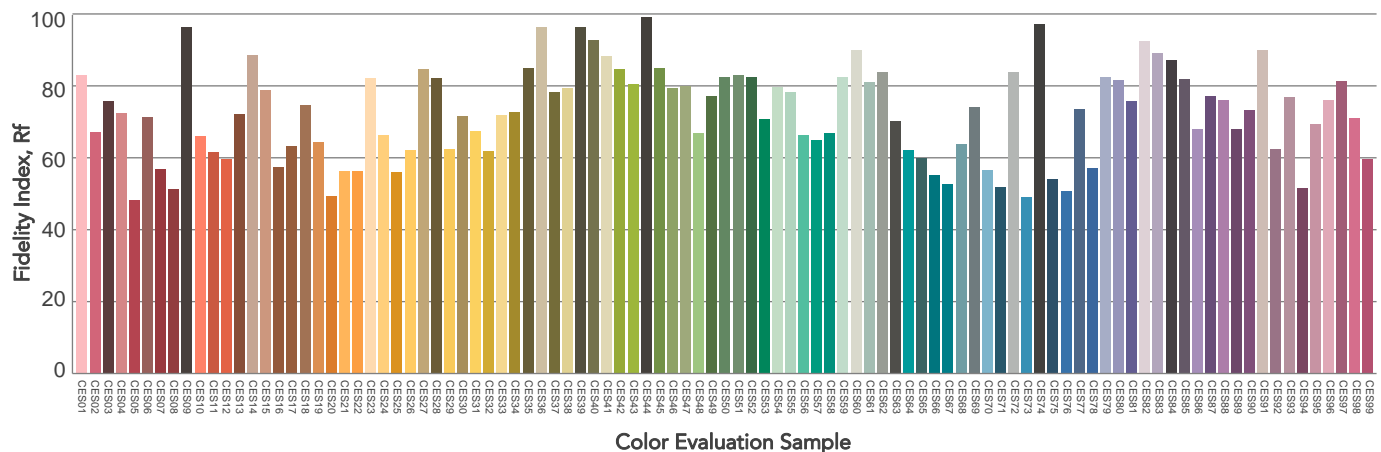
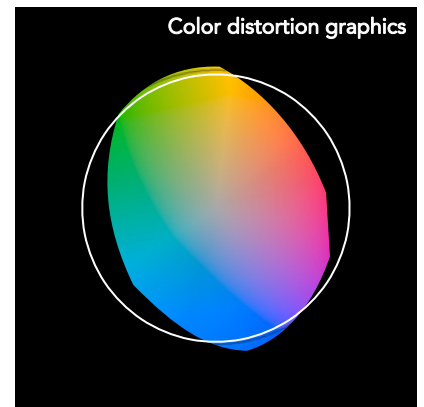
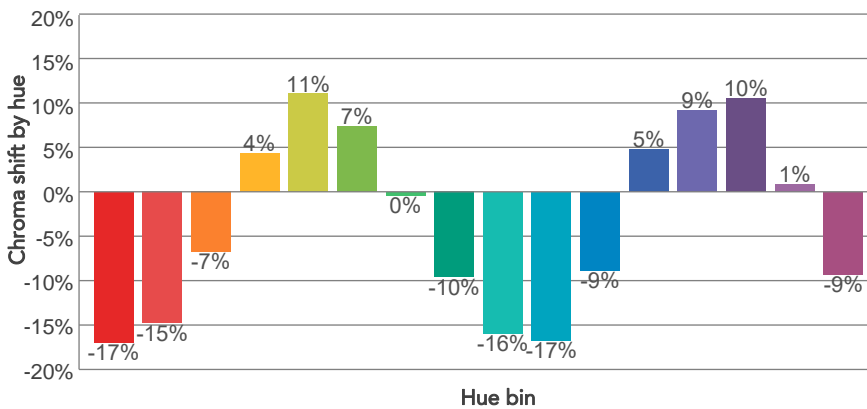
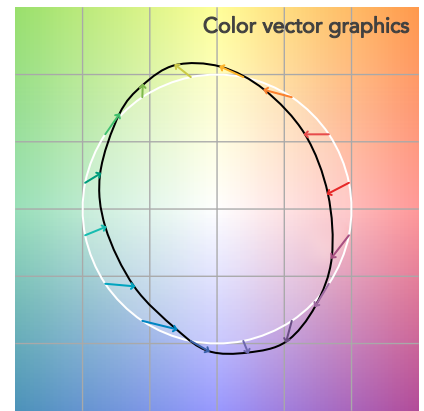
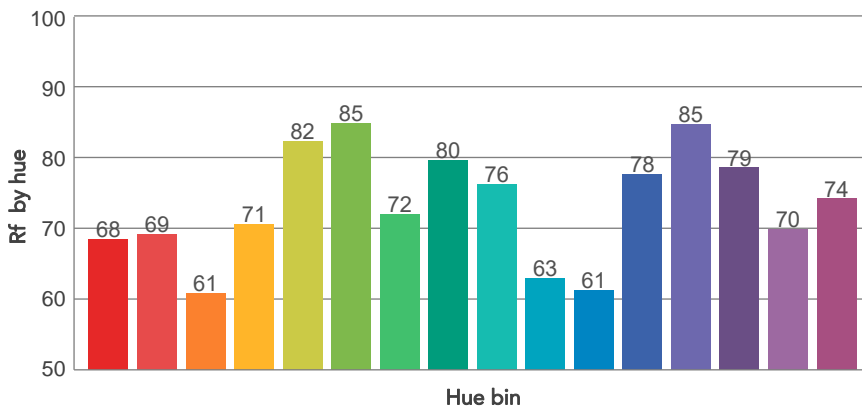
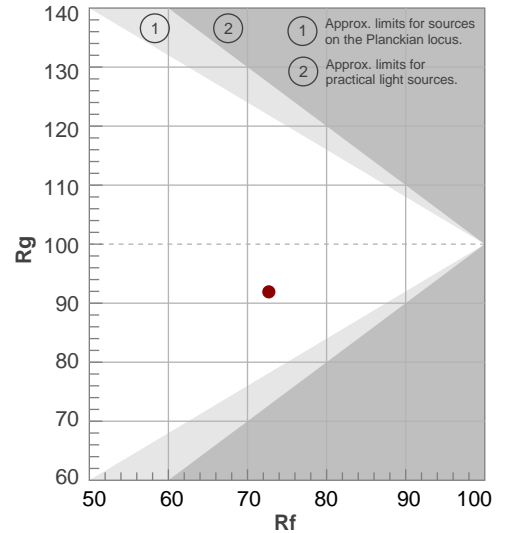
Color temperature	Color rendering index	Red component	Color fidelity	Color gamut	Color quality scale	Television lighting index	Color coordinate cie 1931	Color coordinate cie 1931	Color deviation from black body
CCT	CRI	CRI R9	TM30 Rf	TM30 Rg	CQS	TLCI	x	y	$\Delta uv$
3214 K	66,9	-40,2	72,7	91,9	69,6	43	0,436	0,429	0,0100

# TM30 DETAILS

**Rf 72,7**  
Fidelity index Rf

**Rg 91,9**  
Gammut index

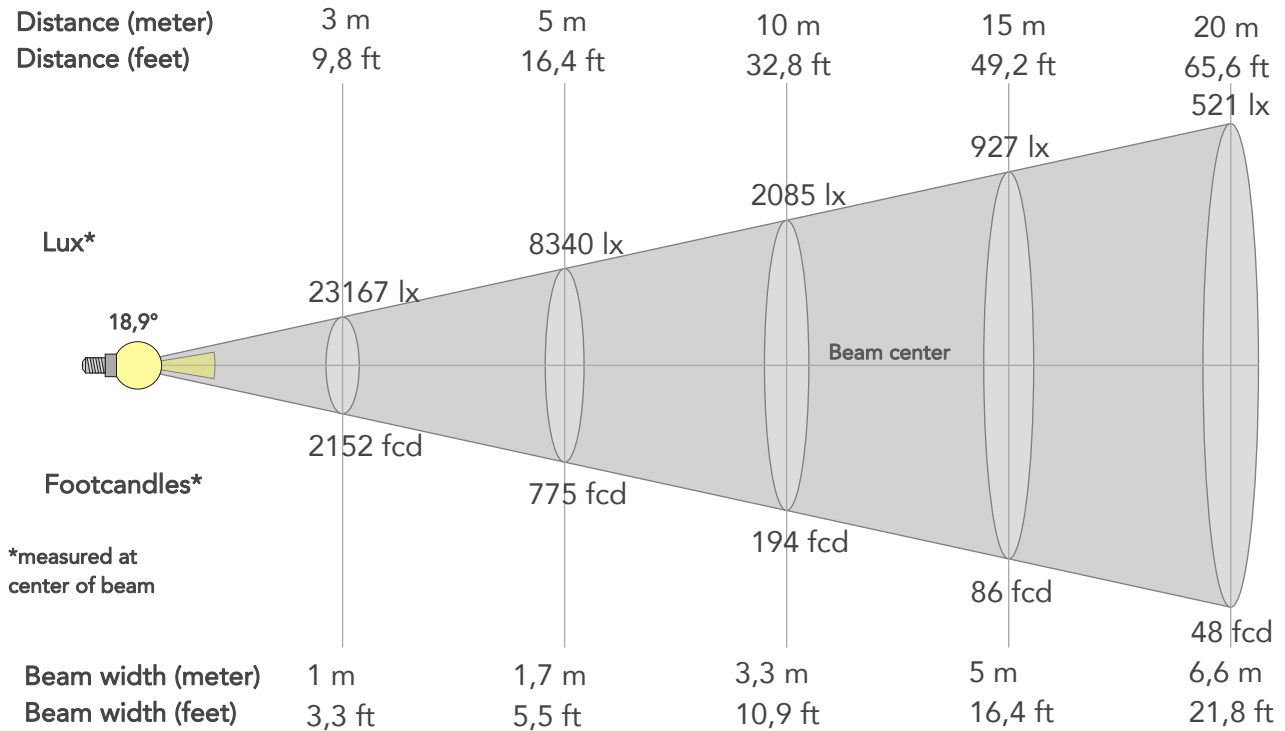
Hue Bin	R <sub>f</sub>	Graphic shifts (%)	
		Chroma	Hue
1	68	-17%	-5%
2	69	-15%	10%
3	61	-7%	20%
4	71	4%	18%
5	82	11%	9%
6	85	7%	-5%
7	72	0%	-18%
8	80	-10%	-9%
9	76	-16%	-3%
10	63	-17%	13%
11	61	-9%	24%
12	78	5%	14%
13	85	9%	2%
14	79	10%	-12%
15	70	1%	-19%
16	74	-9%	-19%



# BEAM DETAILS



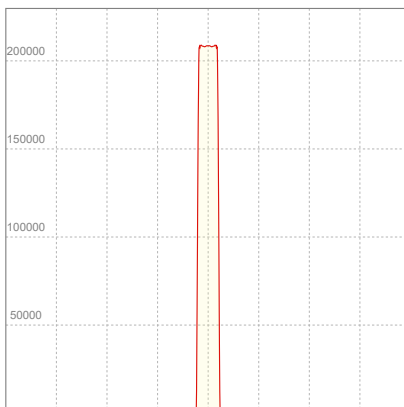
Beam angle 50%	Field angle 10%	Cut off angle 2,5%	Intensity ratio in 120° cone	Intensity ratio in 90° cone
18,9°	20,5°	21,8°	99,7%	99,7%



## BEAM INTENSITIES AND WIDTHS

Distance	1m	2m	3m	4m	5m	7,5m	10m	15m	20m	25m	30m	40m	50m
Distance	3,3ft	6,6ft	9,8ft	13,1ft	16,4ft	24,6ft	32,8ft	49,2ft	65,6ft	82ft	98,4ft	131,2ft	164ft
Lux	208502lx	52125lx	23167lx	13031lx	8340lx	3707lx	2085lx	927lx	521lx	334lx	232lx	130lx	83lx
Footcand.	19370fcd	4843fcd	2152fcd	1211fcd	775fcd	344fcd	194fcd	86fcd	48fcd	31fcd	22fcd	12fcd	8fcd
Beam wid.	0,3m	0,7m	1m	1,3m	1,7m	2,5m	3,3m	5m	6,6m	8,3m	10m	13,3m	16,6m
Beam wid.	1,1ft	2,2ft	3,3ft	4,4ft	5,5ft	8,2ft	10,9ft	16,4ft	21,8ft	27,3ft	32,7ft	43,6ft	54,5ft

## LINEAR DISTRIBUTION DIAGRAM

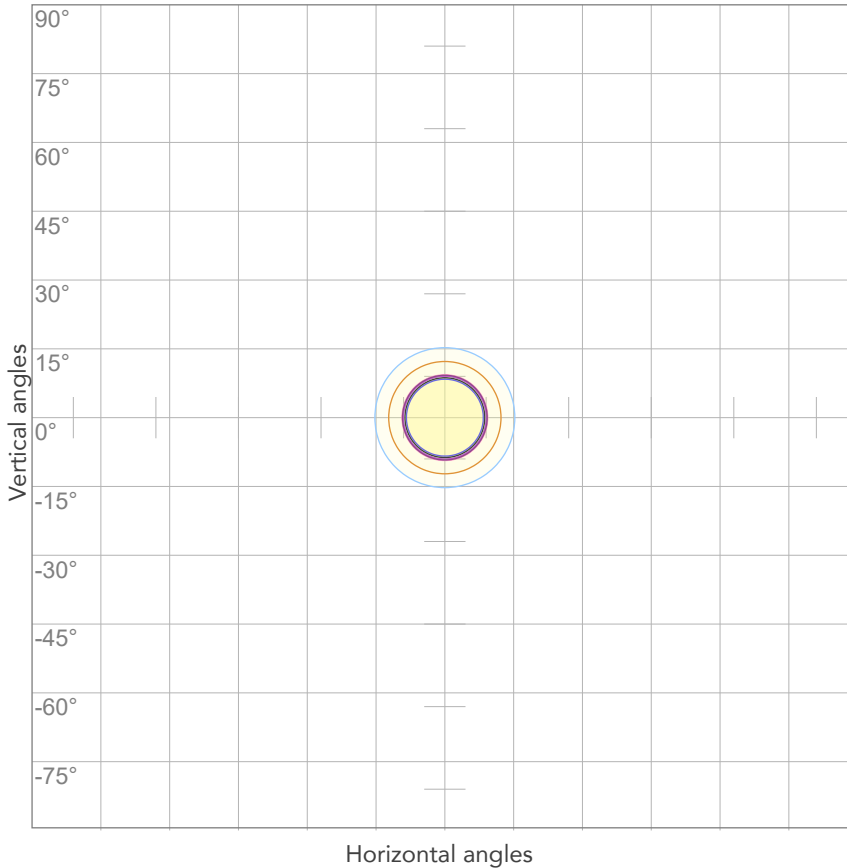


## ELECTRICAL SPECIFICATIONS

Input voltage	Input current	Input power	Power FC	Efficiency
220V	5,59A	1208,9W	0,98	15lm/W

# ISO DIAGRAMS

## ISO CANDELA DIAGRAM



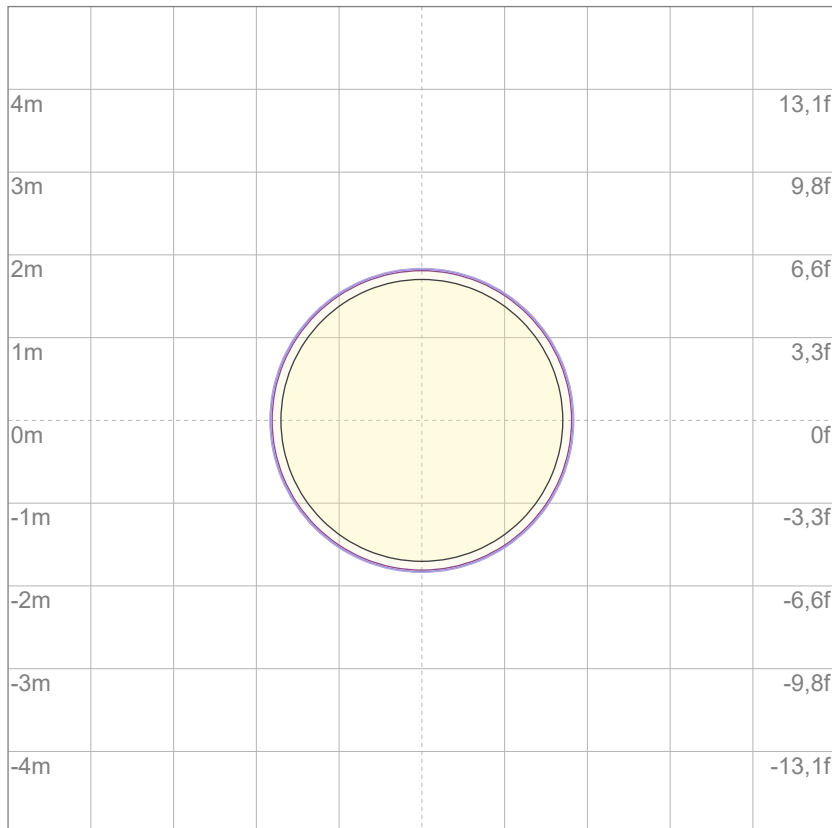
10%	20850 cd
20%	41700 cd
30%	62550 cd
40%	83401 cd
50%	104251 cd
60%	125101 cd
70%	145951 cd
80%	166801 cd

Conditions:

Number of c-planes: 2

Candela at center: 208502 cd

## ISO LUX DIAGRAM



3%	62,6 lx
5%	104 lx
10%	209 lx
30%	626 lx
50%	1043 lx

Conditions:

Number of c-planes: 2

Lux at center: 2085 lx

*Lux distribution on a surface when lamp is mounted at 10 meters from the surface.*

Mounting height: 10 meters (33 feet)



Total lumen output:

10129 lm

Peak candela output:

1355905 cd

Light quality:

CRI: 67,1

Color temperature:

3153 K

**PRODUCT NAME:**

ASTRAPROFILE900

**MEASURAMENT CONDITIONS:**

Beam angle:

Min Zoom

Target:

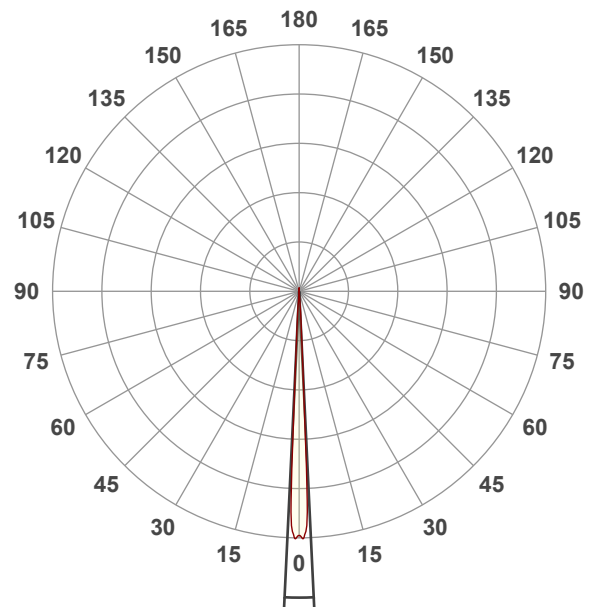
Full On + CTO

Operator:

Salvatore Giglio

Date and time:

03/12/2024 17:58:35

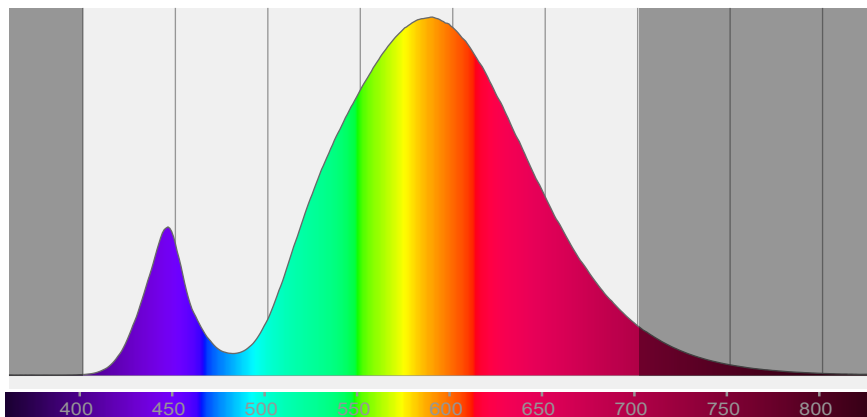


Beam angle 50%: 5,5°

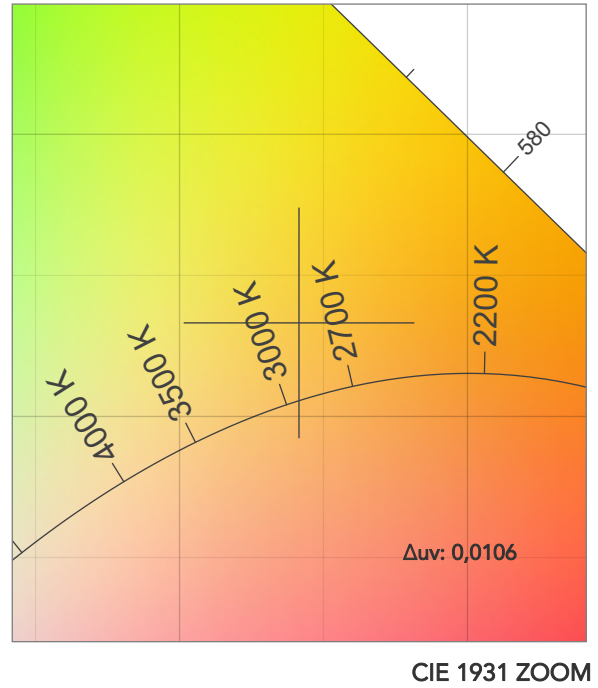
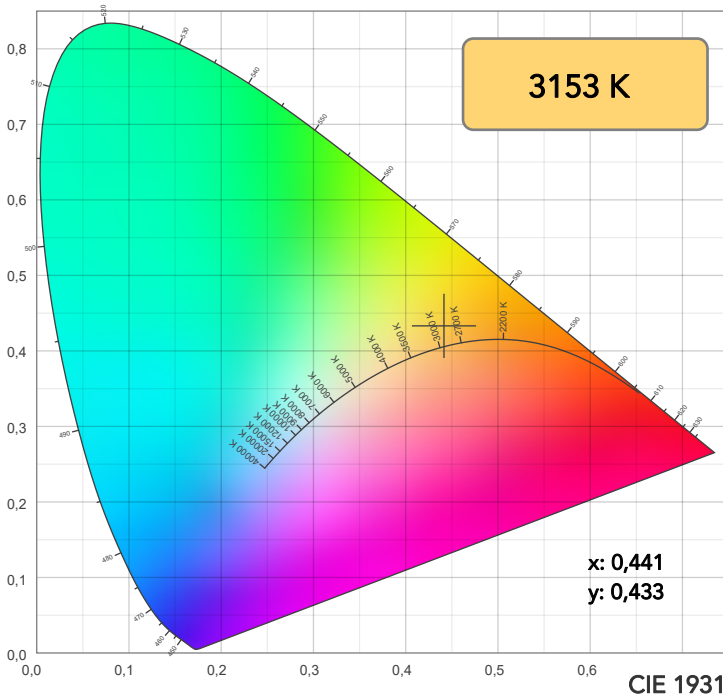
Field angle 10%: 7,3°

Cut off angle 2.5%: 8,1°

Spectra

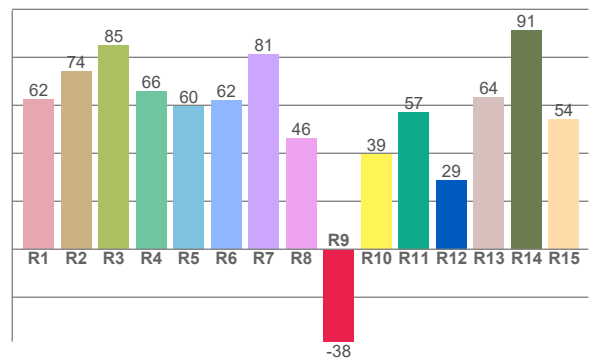
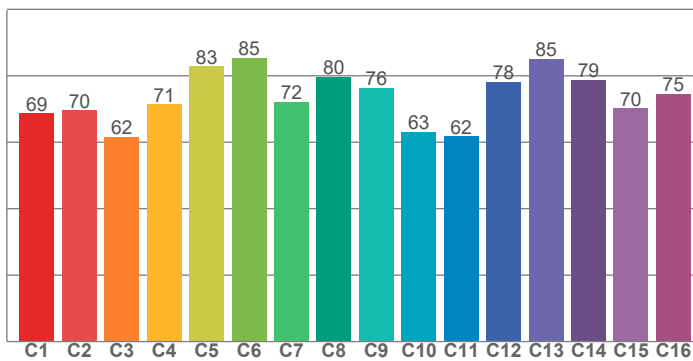


# COLOR DETAILS



TM30: 73,1

CRI: 67,1 (R1-R8)



CRI R values, only R1-R8 are used to calculate final CRI value

R1	R2	R3	R4	R5	R6	R7	R8	R9	R10	R11	R12	R13	R14	R15
62,4	74,1	85,0	65,8	59,8	62,0	81,4	46,2	-38,5	39,5	57,1	28,9	63,5	91,1	54,3

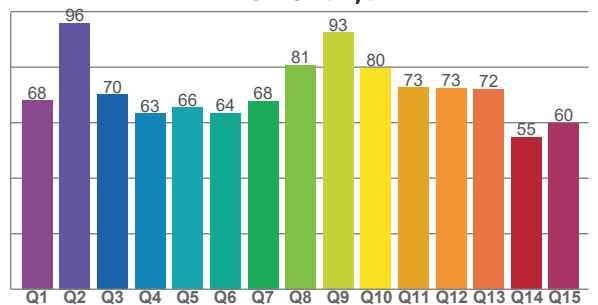
TM30 C values, 16 binned values out of total of 99 C values

C1	C2	C3	C4	C5	C6	C7	C8	C9	C10	C11	C12	C13	C14	C15	C16
68,7	69,7	61,7	71,3	82,8	85,4	72,1	79,7	76,3	63,1	61,8	78,2	85,1	78,8	70,3	74,6

CQS Q values

Q1	Q2	Q3	Q4	Q5	Q6	Q7	Q8	Q9	Q10	Q11	Q12	Q13	Q14	Q15
68,0	96,0	70,2	63,2	65,5	63,5	67,8	80,8	92,5	79,7	72,8	72,5	72,2	54,8	59,9

CQS: 69,8



## COLOR PARAMETERS

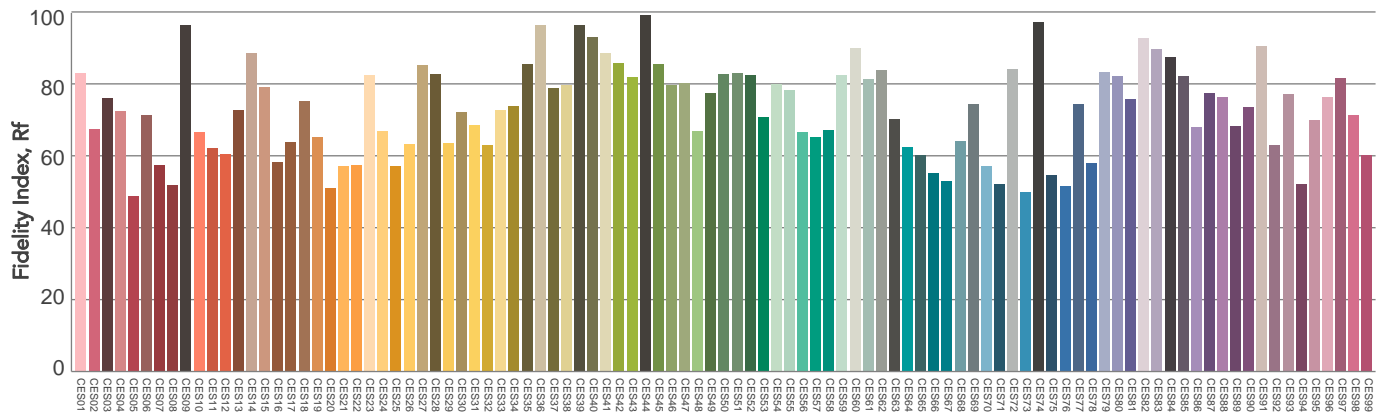
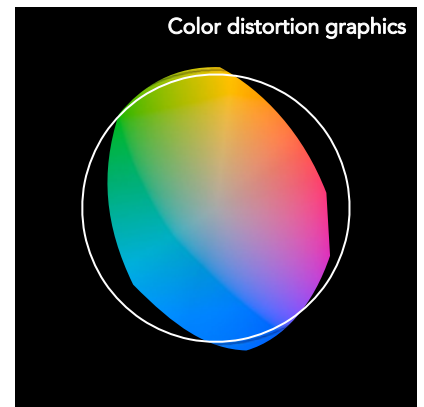
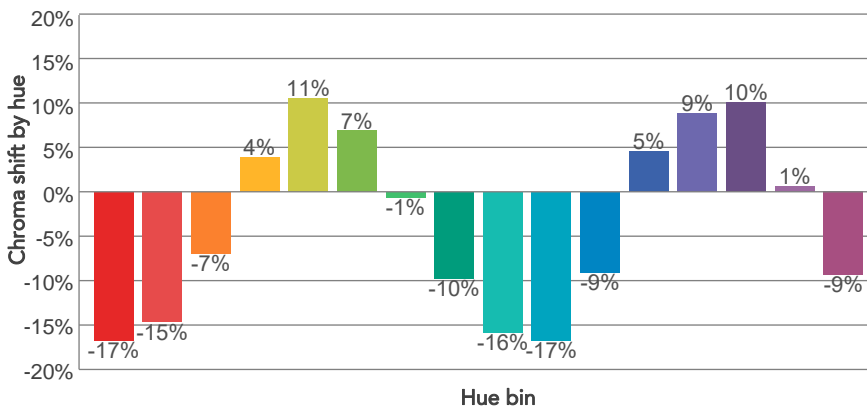
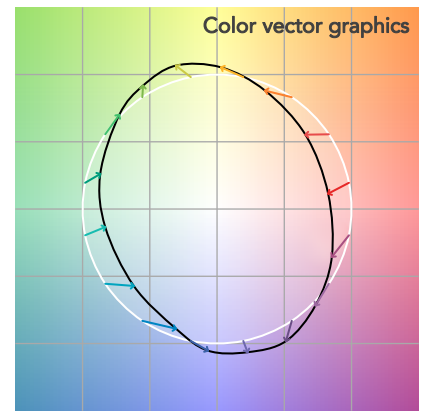
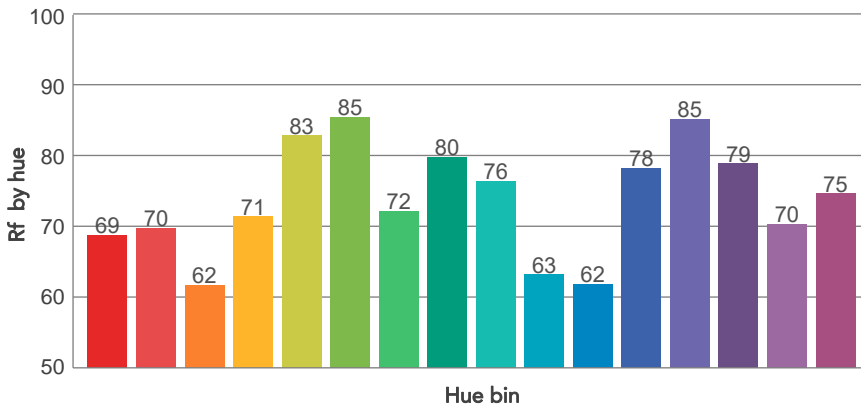
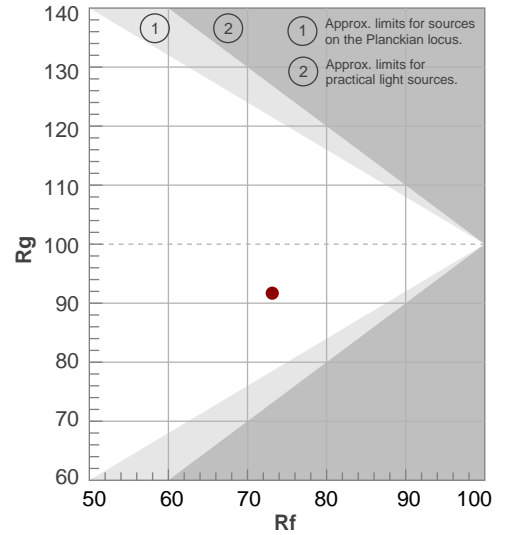
Color temperature	Color rendering index	Red component	Color fidelity	Color gamut	Color quality scale	Television lighting index	Color coordinate cie 1931	Color coordinate cie 1931	Color deviation from black body
CCT	CRI	CRI R9	TM30 Rf	TM30 Rg	CQS	TLCI	x	y	Δuv
3153 K	67,1	-38,5	73,1	91,7	69,8	44	0,441	0,433	0,0106

# TM30 DETAILS

**Rf 73,1**  
Fidelity index Rf

**Rg 91,7**  
Gammut index

Hue Bin	R <sub>f</sub>	Graphic shifts (%)	
		Chroma	Hue
1	69	-17%	-5%
2	70	-15%	9%
3	62	-7%	19%
4	71	4%	18%
5	83	11%	9%
6	85	7%	-5%
7	72	-1%	-18%
8	80	-10%	-9%
9	76	-16%	-3%
10	63	-17%	13%
11	62	-9%	24%
12	78	5%	14%
13	85	9%	1%
14	79	10%	-12%
15	70	1%	-19%
16	75	-9%	-18%

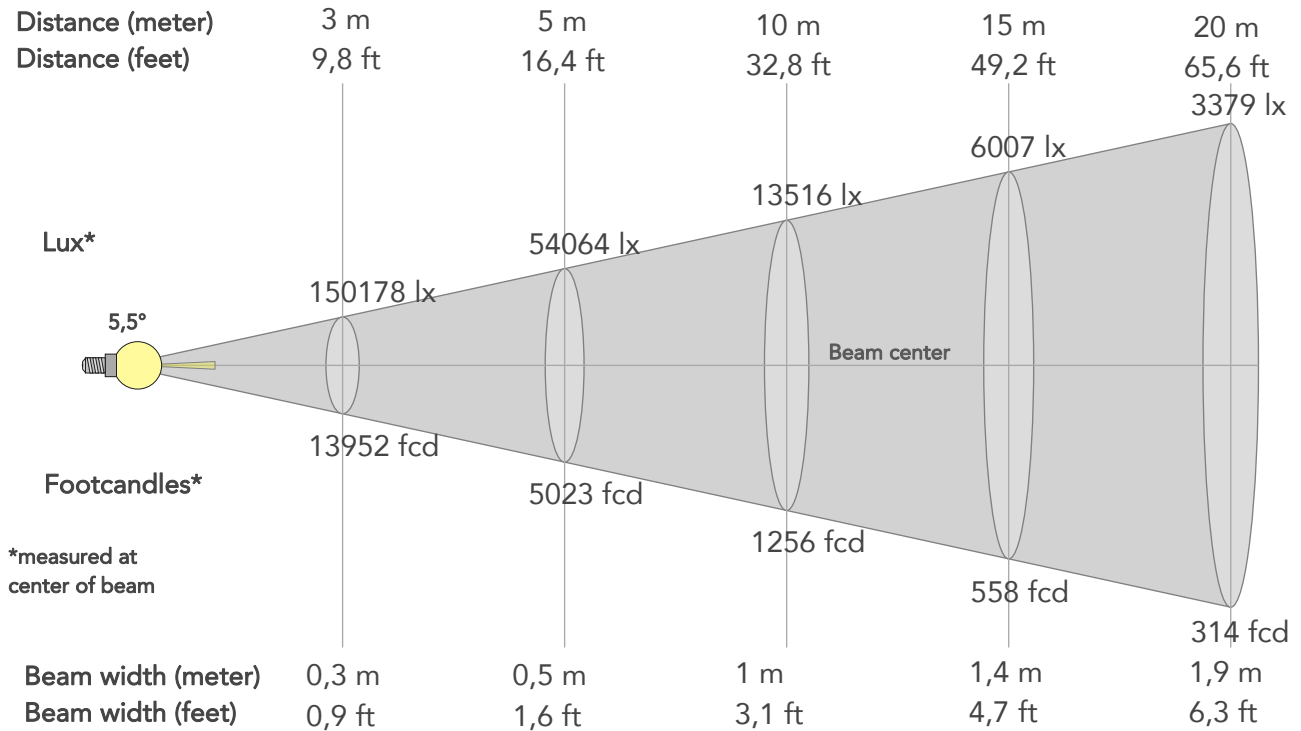


Color Evaluation Sample

# BEAM DETAILS



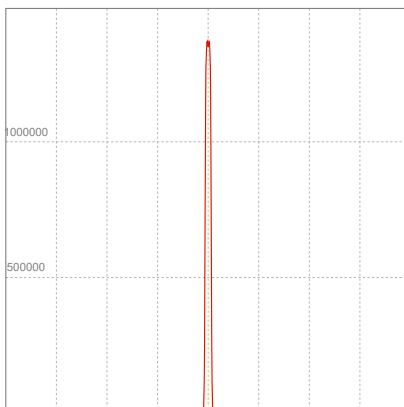
Beam angle 50%	Field angle 10%	Cut off angle 2,5%	Intensity ratio in 120° cone	Intensity ratio in 90° cone
5,5°	7,3°	8,1°	100,0%	100,0%



## BEAM INTENSITIES AND WIDTHS

Distance	1m	2m	3m	4m	5m	7,5m	10m	15m	20m	25m	30m	40m	50m
Distance	3,3ft	6,6ft	9,8ft	13,1ft	16,4ft	24,6ft	32,8ft	49,2ft	65,6ft	82ft	98,4ft	131,2ft	164ft
Lux	1351598lx	337899lx	150178lx	84475lx	54064lx	24028lx	13516lx	6007lx	3379lx	2163lx	1502lx	845lx	541lx
Footcand.	125568fcd	31392fcd	13952fcd	7848fcd	5023fcd	2232fcd	1256fcd	558fcd	314fcd	201fcd	140fcd	78fcd	50fcd
Beam wid.	0,1m	0,2m	0,3m	0,4m	0,5m	0,7m	1m	1,4m	1,9m	2,4m	2,9m	3,8m	4,8m
Beam wid.	0,3ft	0,6ft	0,9ft	1,2ft	1,6ft	2,3ft	3,1ft	4,7ft	6,3ft	7,8ft	9,4ft	12,5ft	15,6ft

## LINEAR DISTRIBUTION DIAGRAM



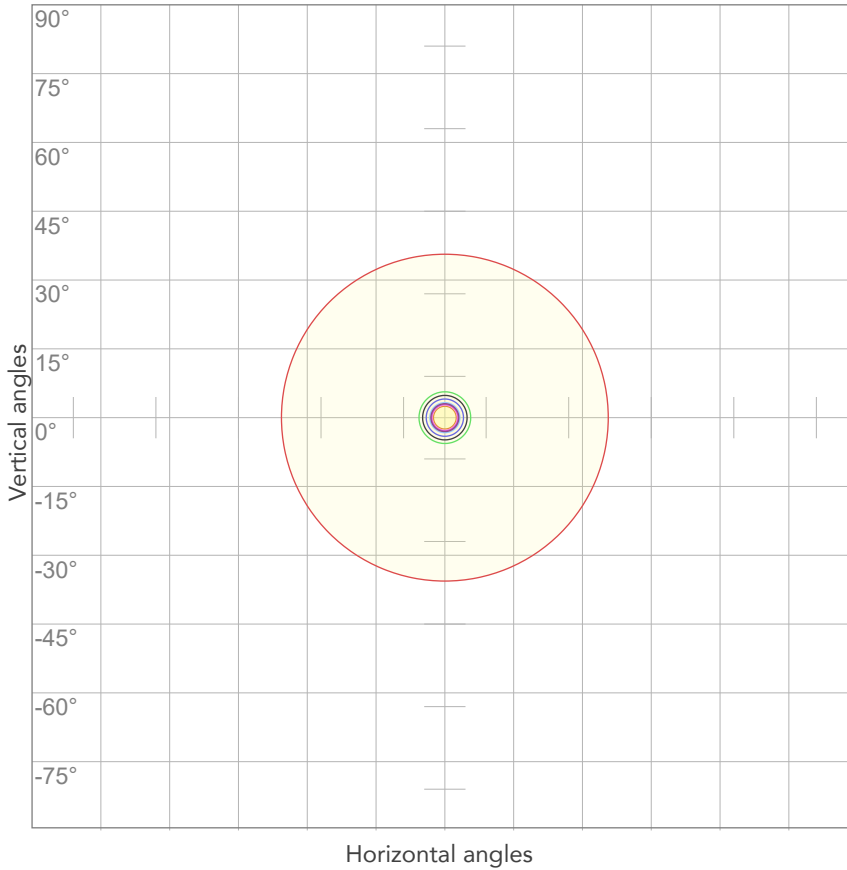
## ELECTRICAL SPECIFICATIONS

Input voltage	Input current	Input power	Power FC	Efficiency
221V	5,58A	1210W	0,98	8lm/W



# ISO DIAGRAMS

## ISO CANDELA DIAGRAM



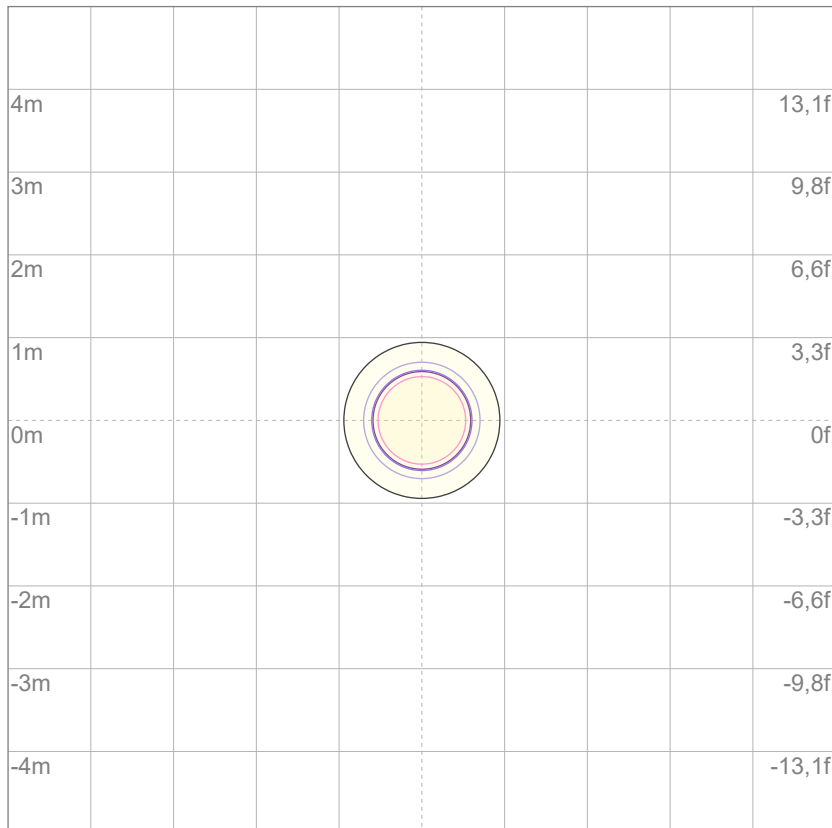
10%	135160 cd
20%	270320 cd
30%	405479 cd
40%	540639 cd
50%	675799 cd
60%	810959 cd
70%	946118 cd
80%	1081278 cd

Conditions:

Number of c-planes: 2

Candela at center: 1351598 cd

## ISO LUX DIAGRAM



Mounting height: 10 meters (33 feet)

3%	405 lx
5%	676 lx
10%	1352 lx
30%	4055 lx
50%	6758 lx

Conditions:

Number of c-planes: 2

Lux at center: 13,5K lx

*Lux distribution on a surface when lamp is mounted at 10 meters from the surface.*



Total lumen output:

10931 lm

Peak candela output:

19607 cd

Light quality:

CRI: 96,2

Color temperature:

5970 K

**PRODUCT NAME:**

ASTRAPROFILE900

**MEASURAMENT CONDITIONS:**

Beam angle:

Max Zoom

Target:

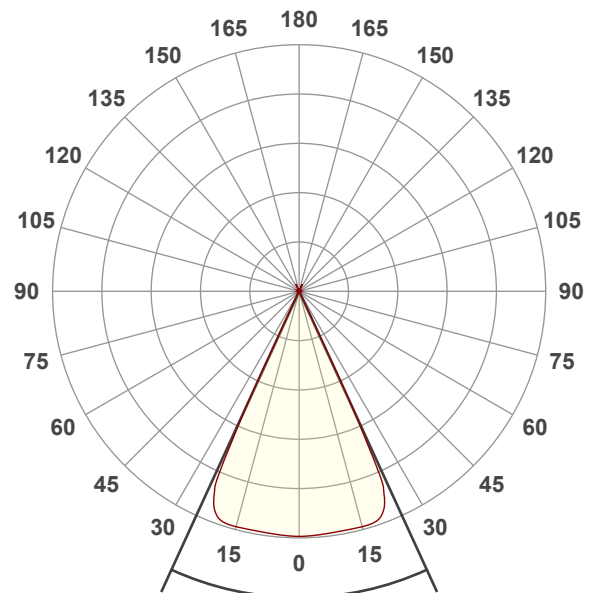
Full On + 5600K

Operator:

Salvatore Giglio

Date and time:

13/12/2024 12:07:12

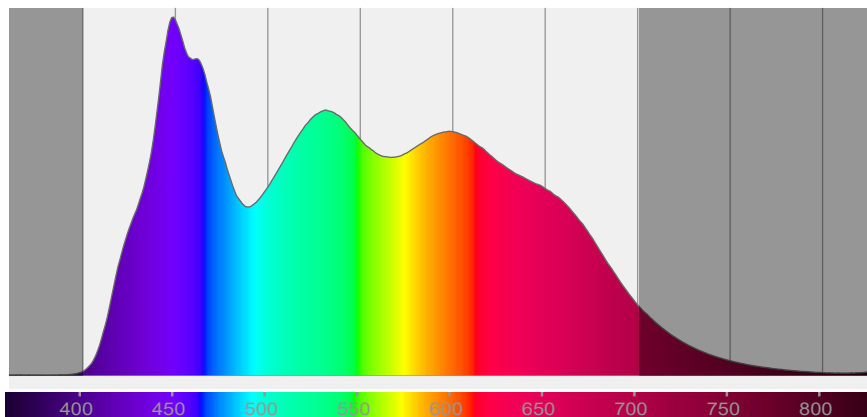


Beam angle 50%: 49,3°

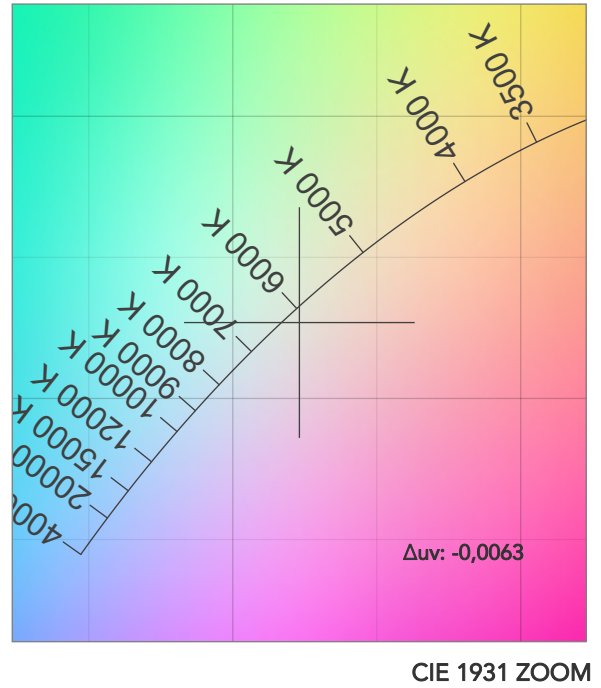
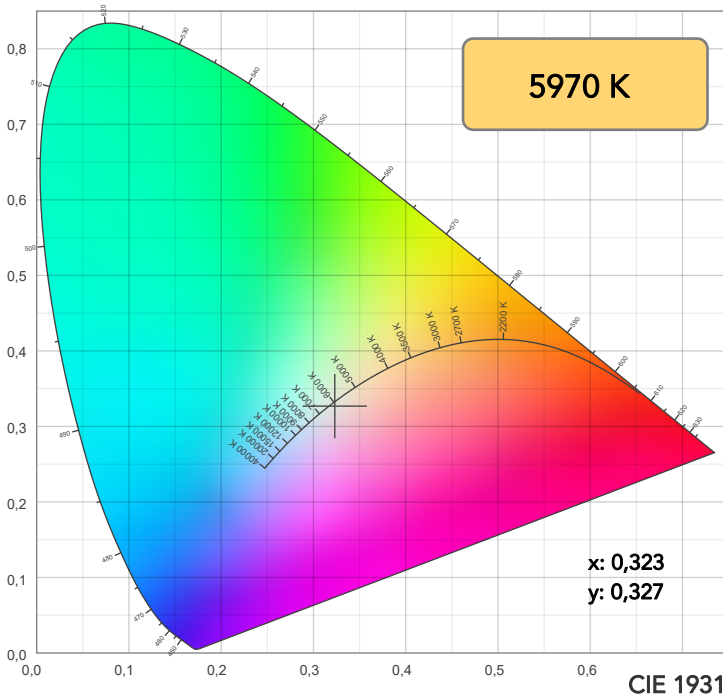
Field angle 10%: 51°

Cut off angle 2.5%: 51,4°

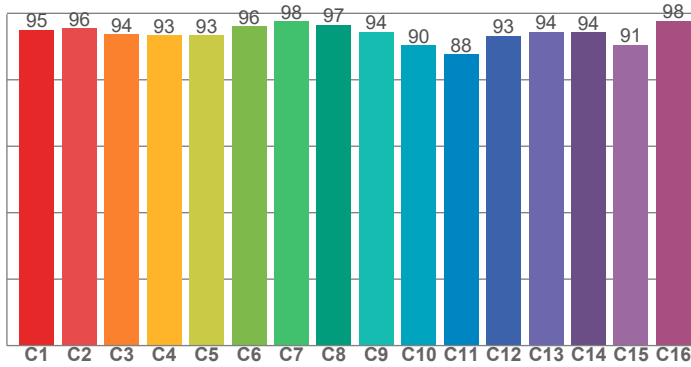
Spectra



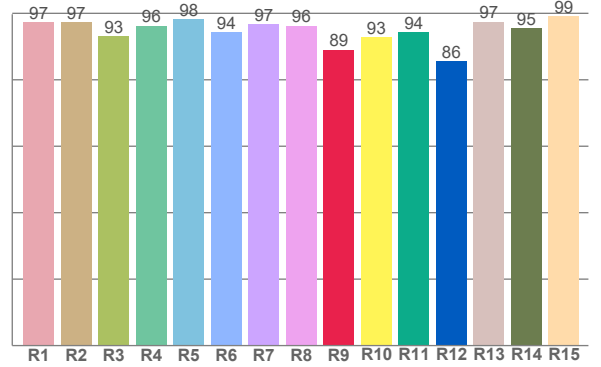
# COLOR DETAILS



**TM30: 93,8**



**CRI: 96,2 (R1-R8)**



CRI R values, only R1-R8 are used to calculate final CRI value

R1	R2	R3	R4	R5	R6	R7	R8	R9	R10	R11	R12	R13	R14	R15
97,3	97,3	93,1	96,3	98,1	94,4	96,6	96,3	89,1	92,8	94,4	85,6	97,5	95,4	99,1

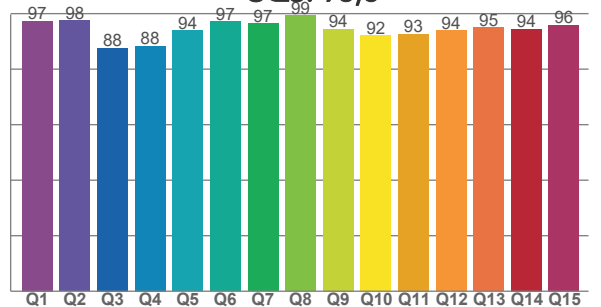
TM30 C values, 16 binned values out of total of 99 C values

C1	C2	C3	C4	C5	C6	C7	C8	C9	C10	C11	C12	C13	C14	C15	C16
95,1	95,5	93,7	93,3	93,5	96,0	97,7	96,5	94,5	90,3	87,7	93,2	94,5	94,3	90,5	97,7

CQS Q values

Q1	Q2	Q3	Q4	Q5	Q6	Q7	Q8	Q9	Q10	Q11	Q12	Q13	Q14	Q15
97,3	97,6	87,6	88,3	94,0	97,3	96,5	99,3	94,4	92,2	92,7	93,9	95,0	94,5	95,9

**CQS: 93,6**



## COLOR PARAMETERS

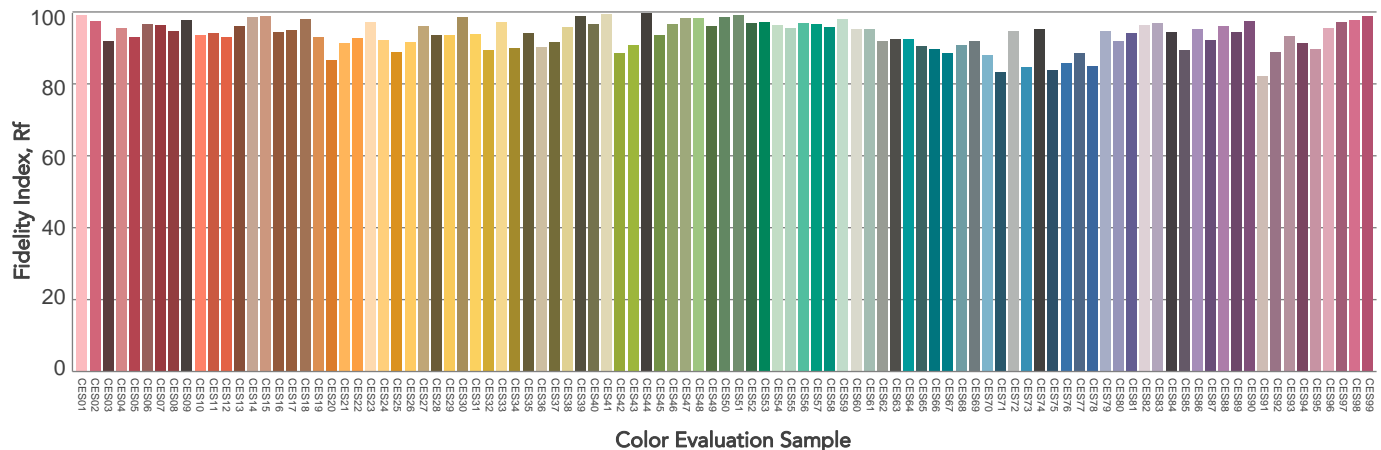
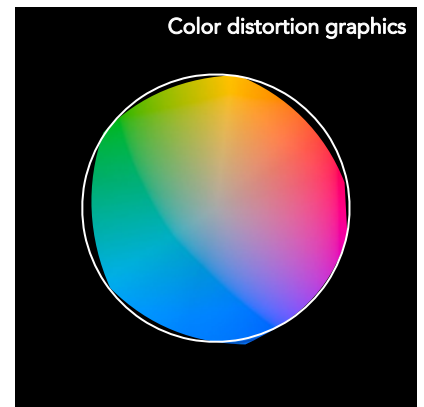
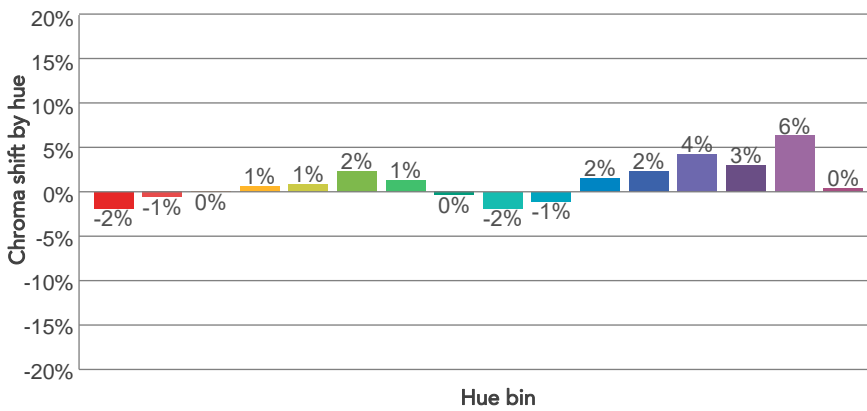
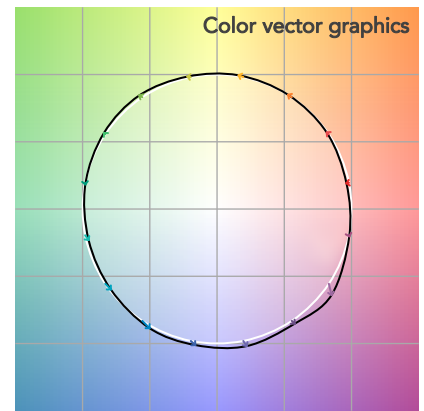
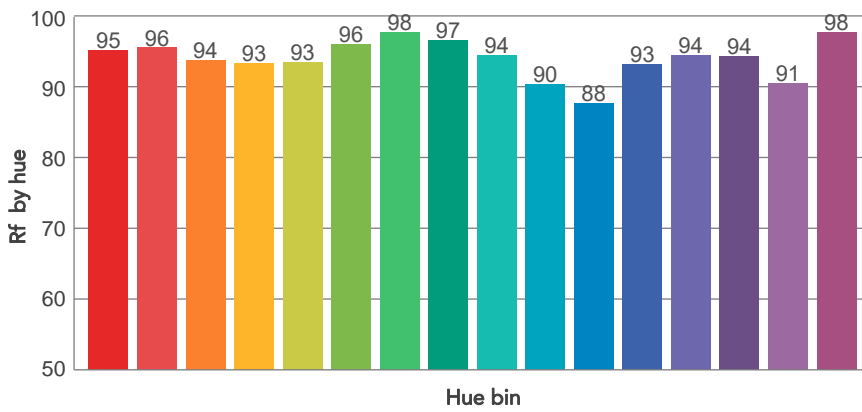
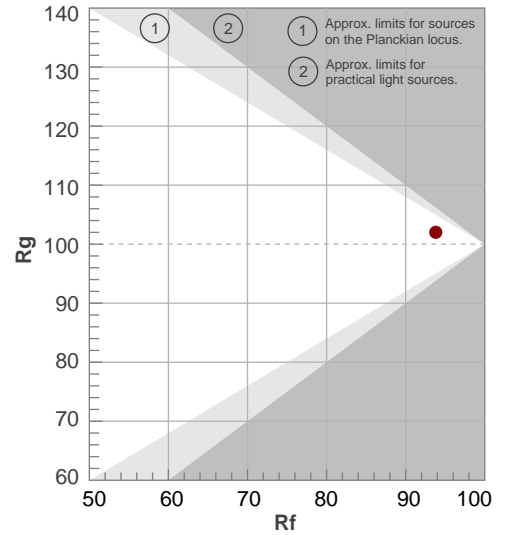
Color temperature	Color rendering index	Red component	Color fidelity	Color gamut	Color quality scale	Television lighting index	Color coordinate cie 1931	Color coordinate cie 1931	Color deviation from black body
CCT	CRI	CRI R9	TM30 Rf	TM30 Rg	CQS	TLCI	x	y	Δuv
5970 K	96,2	89,1	93,8	102,0	93,6	98	0,323	0,327	-0,0063

# TM30 DETAILS

**Rf 93,8**  
Fidelity index Rf

**Rg 102,0**  
Gammut index

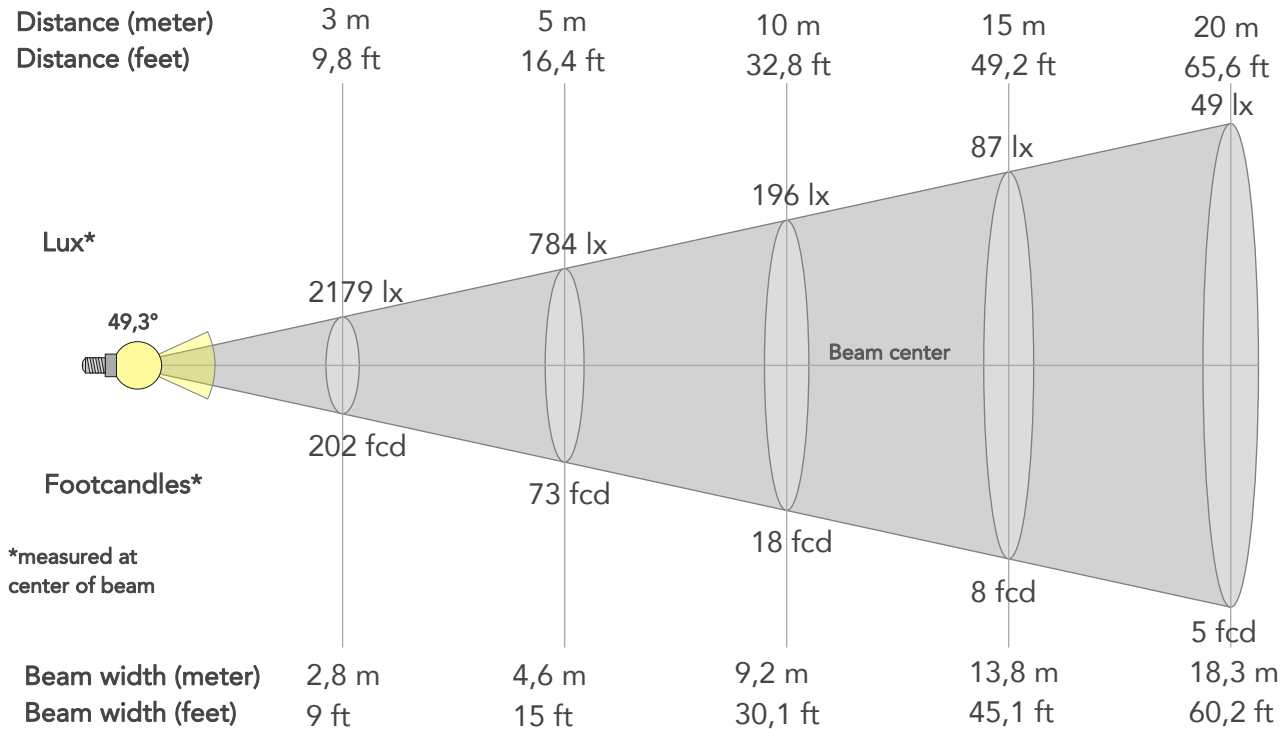
Hue Bin	R <sub>f</sub>	Graphic shifts (%)	
		Chroma	Hue
1	95	-2%	0%
2	96	-1%	2%
3	94	0%	3%
4	93	1%	4%
5	93	1%	2%
6	96	2%	1%
7	98	1%	0%
8	97	0%	1%
9	94	-2%	4%
10	90	-1%	6%
11	88	2%	8%
12	93	2%	4%
13	94	4%	2%
14	94	3%	1%
15	91	6%	-6%
16	98	0%	-1%



# BEAM DETAILS



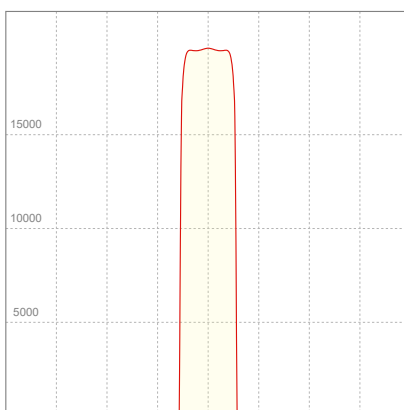
Beam angle 50%	Field angle 10%	Cut off angle 2,5%	Intensity ratio in 120° cone	Intensity ratio in 90° cone
49,3°	51°	51,4°	99,9%	99,8%



## BEAM INTENSITIES AND WIDTHS

Distance	1m	2m	3m	4m	5m	7,5m	10m	15m	20m	25m	30m	40m	50m
Distance	3,3ft	6,6ft	9,8ft	13,1ft	16,4ft	24,6ft	32,8ft	49,2ft	65,6ft	82ft	98,4ft	131,2ft	164ft
Lux	19607lx	4902lx	2179lx	1225lx	784lx	349lx	196lx	87lx	49lx	31lx	22lx	12lx	8lx
Footcand.	1822fcd	455fcd	202fcd	114fcd	73fcd	32fcd	18fcd	8fcd	5fcd	3fcd	2fcd	1fcd	1fcd
Beam wid.	0,9m	1,8m	2,8m	3,7m	4,6m	6,9m	9,2m	13,8m	18,3m	22,9m	27,5m	36,7m	45,9m
Beam wid.	3ft	6,1ft	9ft	12ft	15ft	22,6ft	30,1ft	45,1ft	60,2ft	75,2ft	90,2ft	120,3ft	150,4ft

## LINEAR DISTRIBUTION DIAGRAM

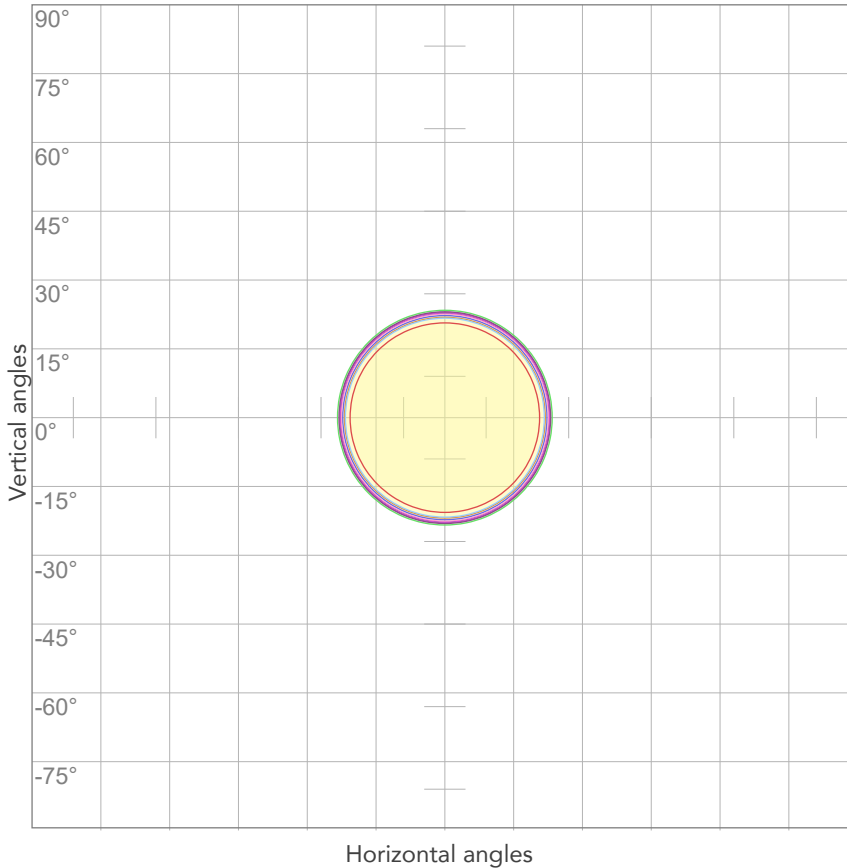


## ELECTRICAL SPECIFICATIONS

Input voltage	Input current	Input power	Power FC	Efficiency
220V	5,68A	1227W	0,98	9lm/W

# ISO DIAGRAMS

## ISO CANDELA DIAGRAM



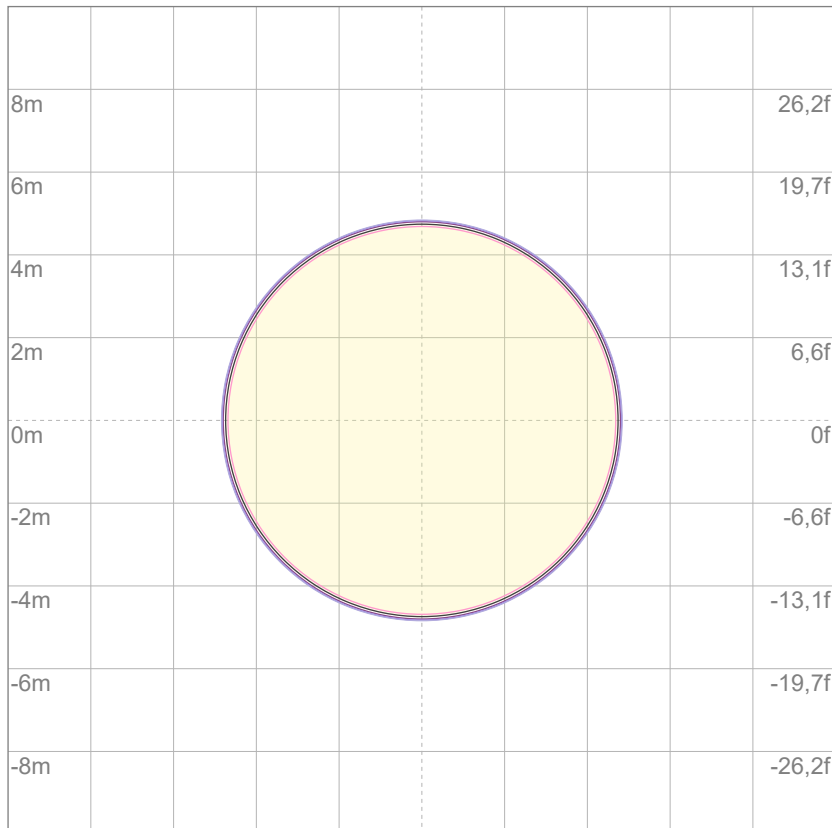
10%	1961 cd
20%	3921 cd
30%	5882 cd
40%	7843 cd
50%	9803 cd
60%	11764 cd
70%	13725 cd
80%	15685 cd

Conditions:

Number of c-planes: 2

Candela at center: 19607 cd

## ISO LUX DIAGRAM



Mounting height: 10 meters (33 feet)

3%	5,88 lx
5%	9,80 lx
10%	19,6 lx
30%	58,8 lx
50%	98,0 lx

Conditions:

Number of c-planes: 2

Lux at center: 196 lx

*Lux distribution on a surface when lamp is mounted at 10 meters from the surface.*



Total lumen output:

10938 lm

Peak candela output:

131639 cd

Light quality:

CRI: 96,5

Color temperature:

6055 K

**PRODUCT NAME:**

ASTRAPROFILE900

**MEASURAMENT CONDITIONS:**

Beam angle:

Med Zoom

Target:

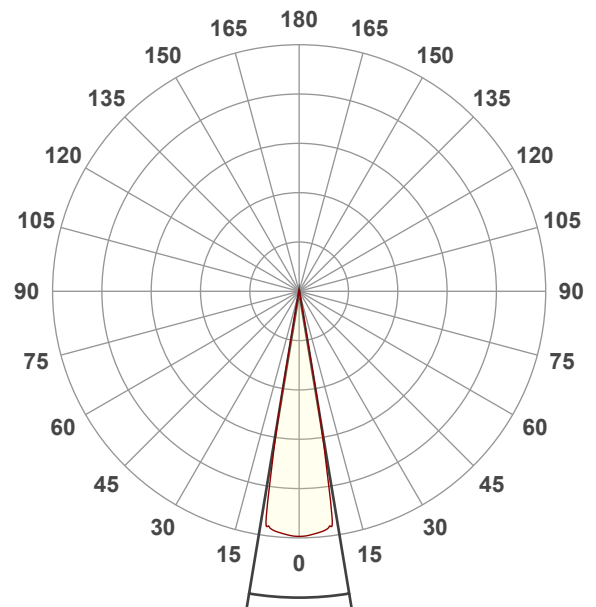
Full On + 5600K

Operator:

Salvatore Giglio

Date and time:

03/12/2024 17:05:25

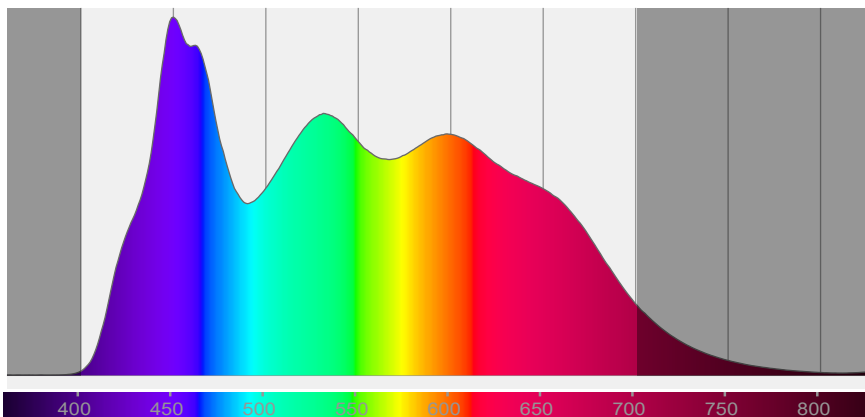


Beam angle 50%: 18,8°

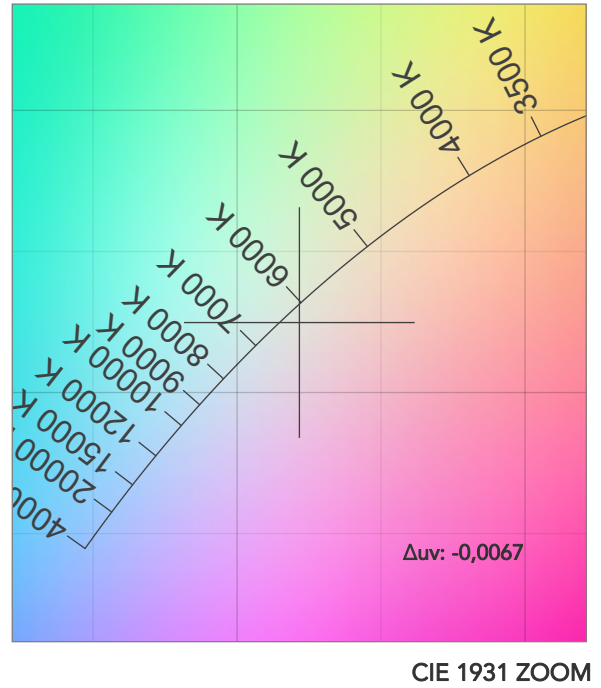
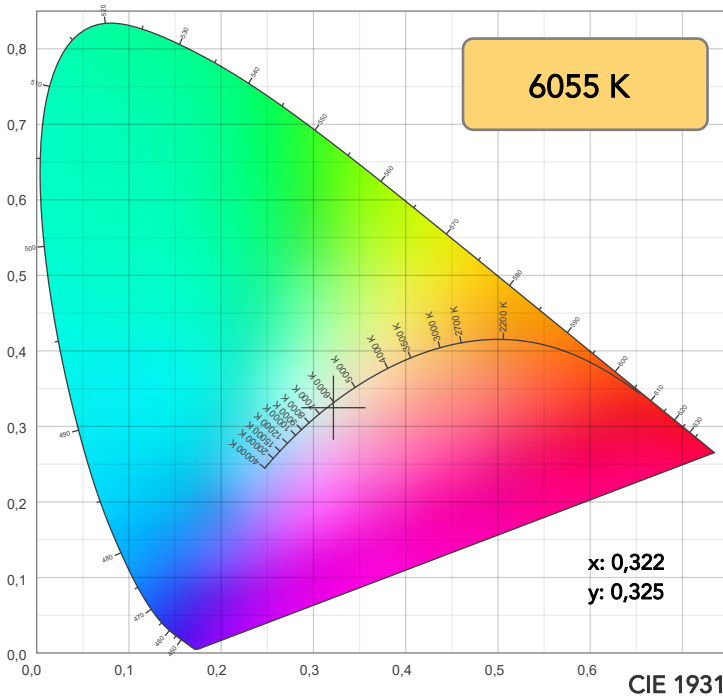
Field angle 10%: 20,5°

Cut off angle 2.5%: 21,9°

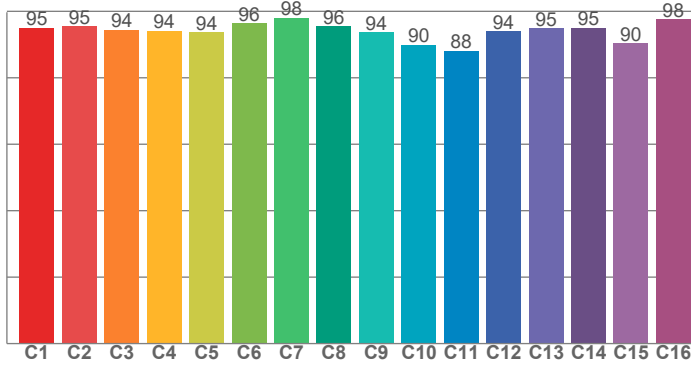
Spectra



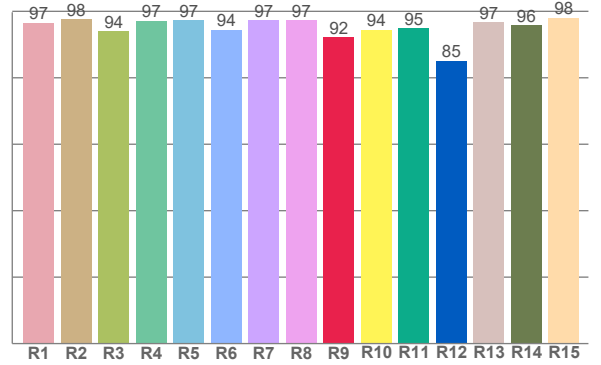
# COLOR DETAILS



**TM30: 93,9**



**CRI: 96,5 (R1-R8)**



CRI R values, only R1-R8 are used to calculate final CRI value

R1	R2	R3	R4	R5	R6	R7	R8	R9	R10	R11	R12	R13	R14	R15
96,6	97,5	94,0	97,2	97,4	94,5	97,3	97,4	92,2	94,5	95,0	85,1	96,8	95,9	98,1

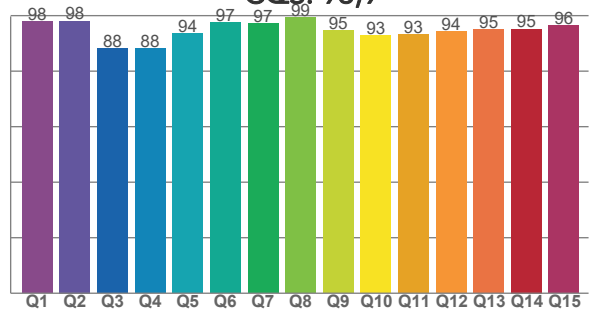
TM30 C values, 16 binned values out of total of 99 C values

C1	C2	C3	C4	C5	C6	C7	C8	C9	C10	C11	C12	C13	C14	C15	C16
95,0	95,5	94,5	94,2	93,7	96,4	98,0	95,6	93,6	89,9	88,1	94,1	94,9	95,0	90,4	97,6

CQS Q values

Q1	Q2	Q3	Q4	Q5	Q6	Q7	Q8	Q9	Q10	Q11	Q12	Q13	Q14	Q15
97,8	98,1	88,2	88,1	93,5	97,5	97,2	99,4	94,7	92,9	93,1	94,2	95,0	95,2	96,5

**CQS: 93,9**



## COLOR PARAMETERS

Color temperature	Color rendering index	Red component	Color fidelity	Color gamut	Color quality scale	Television lighting index	Color coordinate cie 1931	Color coordinate cie 1931	Color deviation from black body
CCT	CRI	CRI R9	TM30 Rf	TM30 Rg	CQS	TLCI	x	y	$\Delta uv$
6055 K	96,5	92,2	93,9	101,7	93,9	98	0,322	0,325	-0,0067

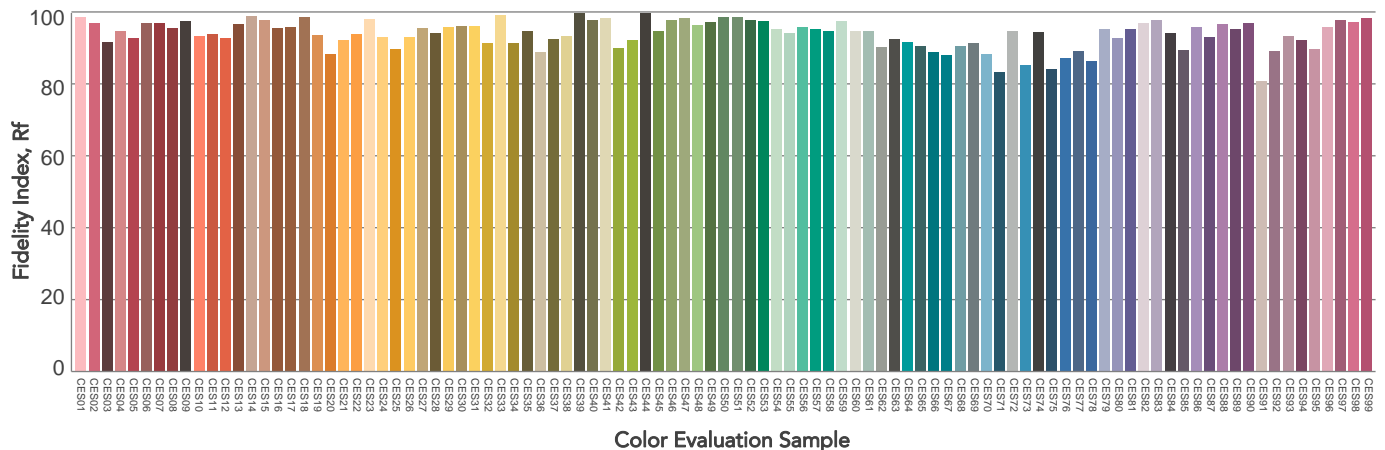
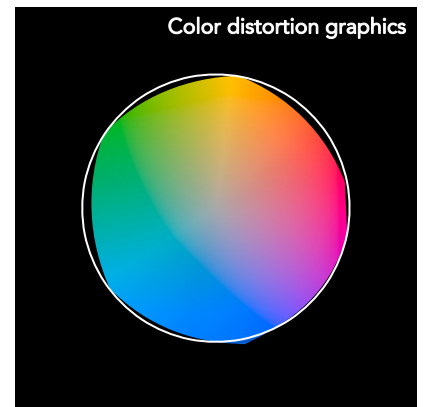
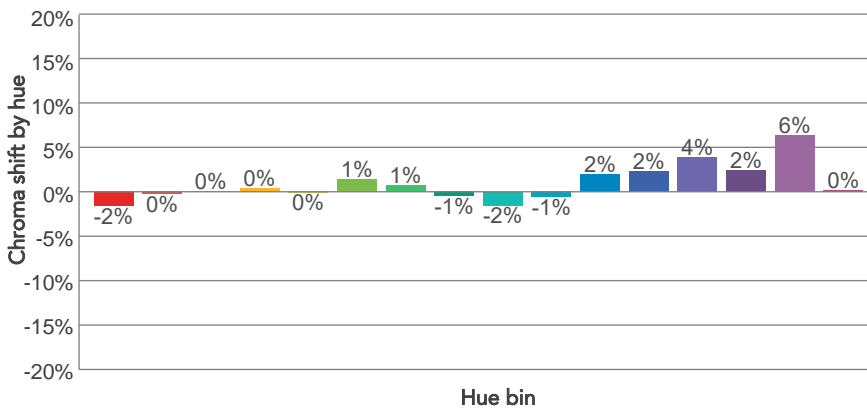
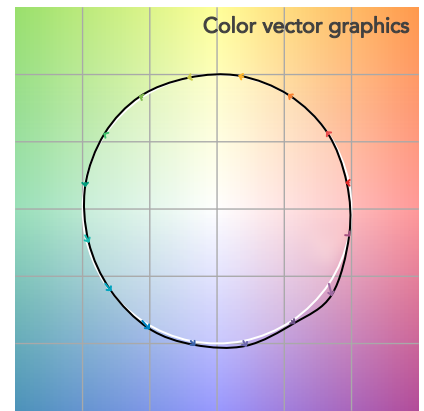
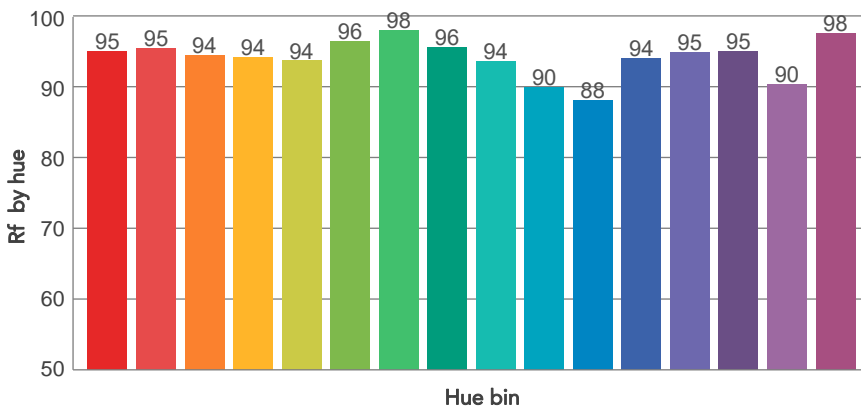
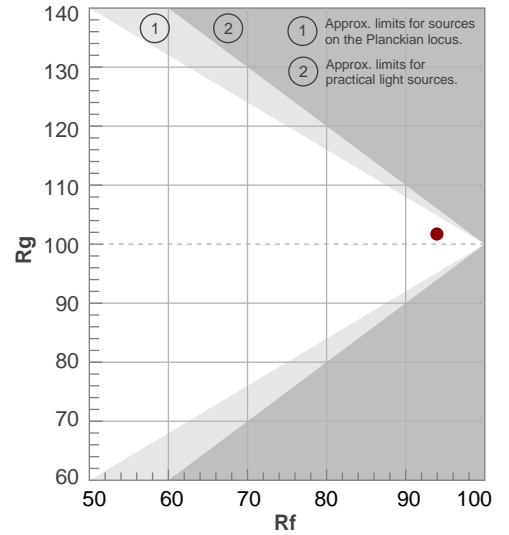


# TM30 DETAILS

**Rf 93,9**  
Fidelity index Rf

**Rg 101,7**  
Gammut index

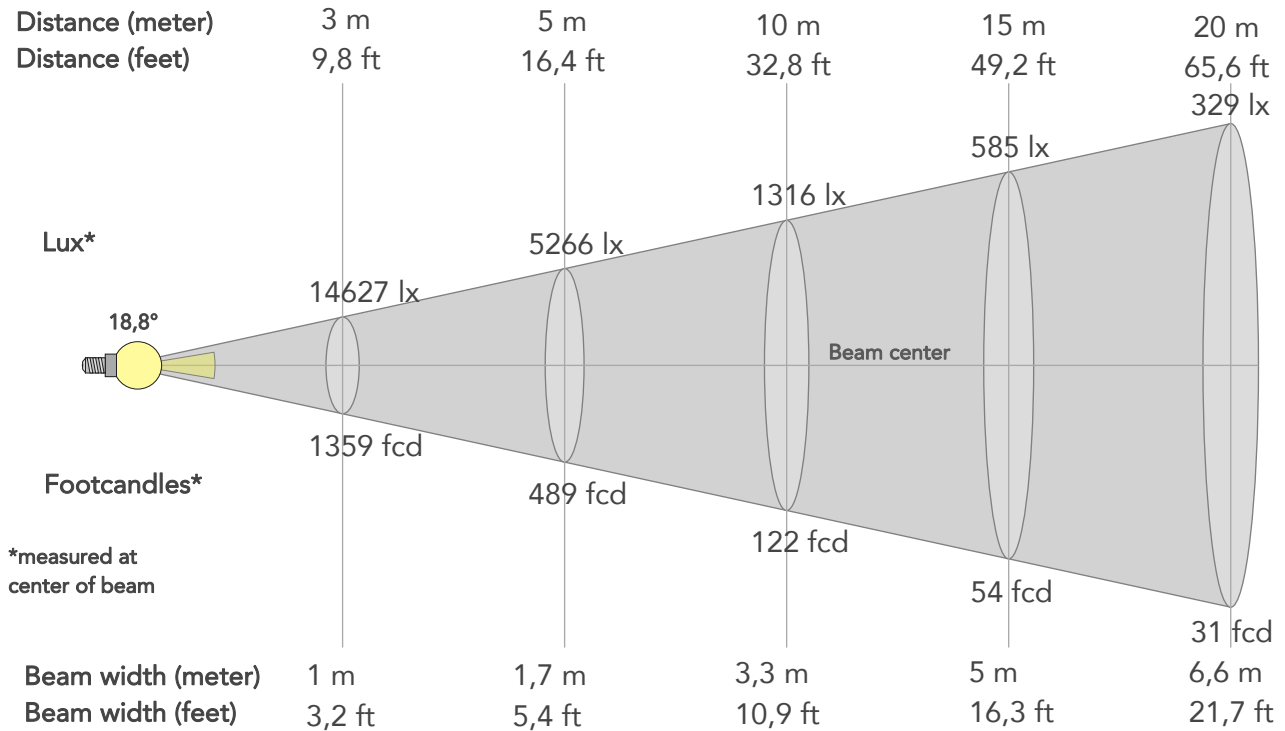
Hue Bin	R <sub>f</sub>	Graphic shifts (%)	
		Chroma	Hue
1	95	-2%	0%
2	95	0%	2%
3	94	0%	3%
4	94	0%	3%
5	94	0%	2%
6	96	1%	1%
7	98	1%	0%
8	96	-1%	2%
9	94	-2%	5%
10	90	-1%	6%
11	88	2%	7%
12	94	2%	3%
13	95	4%	1%
14	95	2%	1%
15	90	6%	-6%
16	98	0%	0%



# BEAM DETAILS



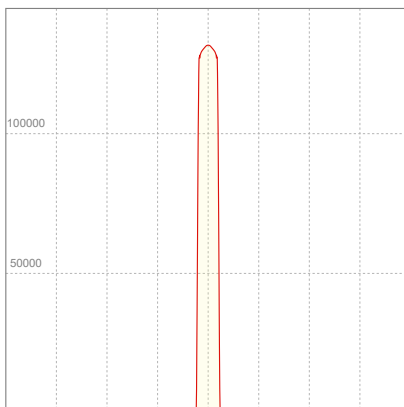
Beam angle 50%	Field angle 10%	Cut off angle 2,5%	Intensity ratio in 120° cone	Intensity ratio in 90° cone
18,8°	20,5°	21,9°	99,8%	99,8%



## BEAM INTENSITIES AND WIDTHS

Distance	1m	2m	3m	4m	5m	7,5m	10m	15m	20m	25m	30m	40m	50m
Distance	3,3ft	6,6ft	9,8ft	13,1ft	16,4ft	24,6ft	32,8ft	49,2ft	65,6ft	82ft	98,4ft	131,2ft	164ft
Lux	131639lx	32910lx	14627lx	8227lx	5266lx	2340lx	1316lx	585lx	329lx	211lx	146lx	82lx	53lx
Footcand.	12230fcd	3057fcd	1359fcd	764fcd	489fcd	217fcd	122fcd	54fcd	31fcd	20fcd	14fcd	8fcd	5fcd
Beam wid.	0,3m	0,7m	1m	1,3m	1,7m	2,5m	3,3m	5m	6,6m	8,3m	9,9m	13,2m	16,6m
Beam wid.	1,1ft	2,2ft	3,2ft	4,3ft	5,4ft	8,1ft	10,9ft	16,3ft	21,7ft	27,2ft	32,6ft	43,5ft	54,3ft

## LINEAR DISTRIBUTION DIAGRAM

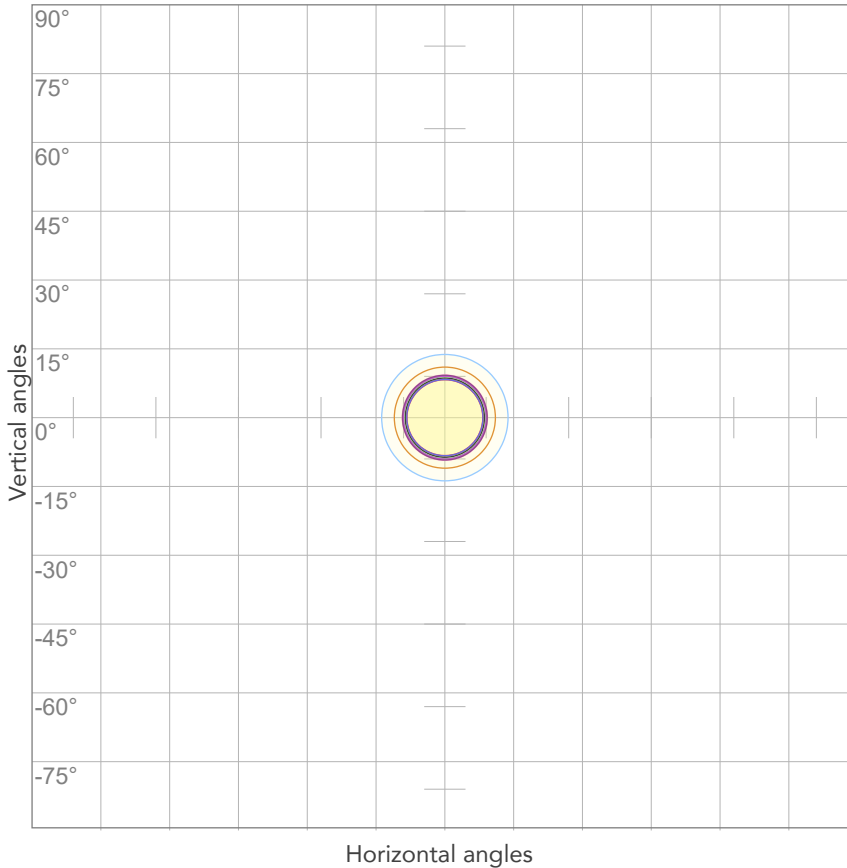


## ELECTRICAL SPECIFICATIONS

Input voltage	Input current	Input power	Power FC	Efficiency
221V	5,57A	1206,2W	0,98	9lm/W

# ISO DIAGRAMS

## ISO CANDELA DIAGRAM



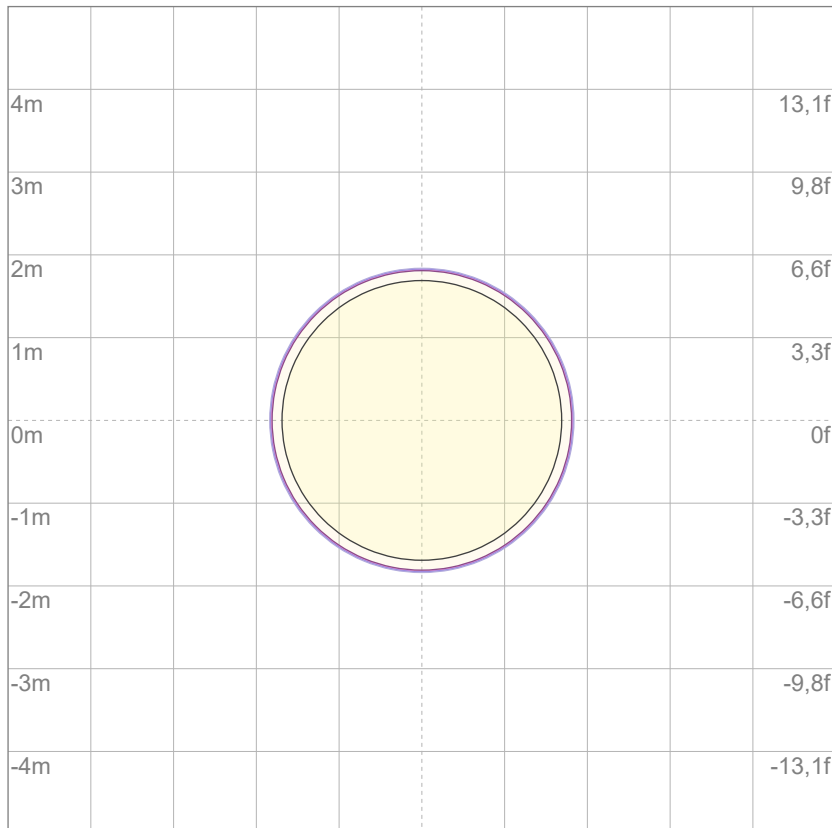
10%	13164 cd
20%	26328 cd
30%	39492 cd
40%	52656 cd
50%	65820 cd
60%	78984 cd
70%	92148 cd
80%	105312 cd

Conditions:

Number of c-planes: 2

Candela at center: 131639 cd

## ISO LUX DIAGRAM



Mounting height: 10 meters (33 feet)

3%	39,5 lx
5%	65,8 lx
10%	132 lx
30%	395 lx
50%	658 lx

Conditions:

Number of c-planes: 2

Lux at center: 1316 lx

*Lux distribution on a surface when lamp is mounted at 10 meters from the surface.*



Total lumen output:

6721 lm

Peak candela output:

907072 cd

Light quality:

CRI: 95,0

Color temperature:

5580 K

**PRODUCT NAME:**

ASTRAPROFILE900

**MEASURAMENT CONDITIONS:**

Beam angle:

Min Zoom

Target:

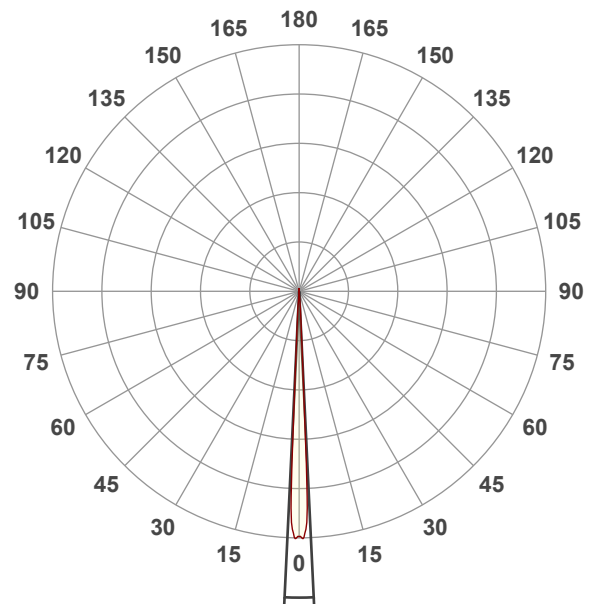
Full On + 5600K

Operator:

Salvatore Giglio

Date and time:

03/12/2024 18:00:26

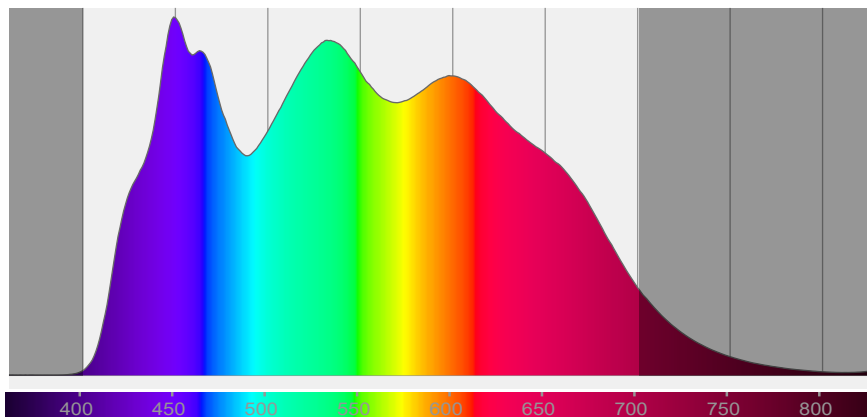


Beam angle 50%: 5,5°

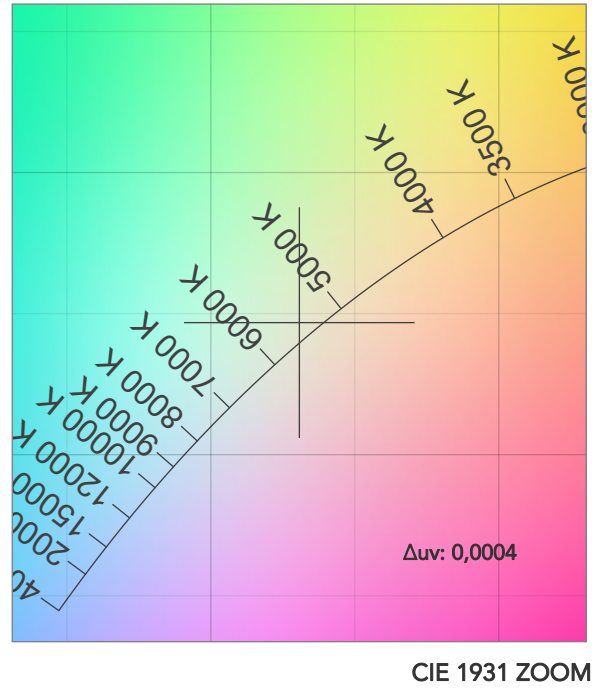
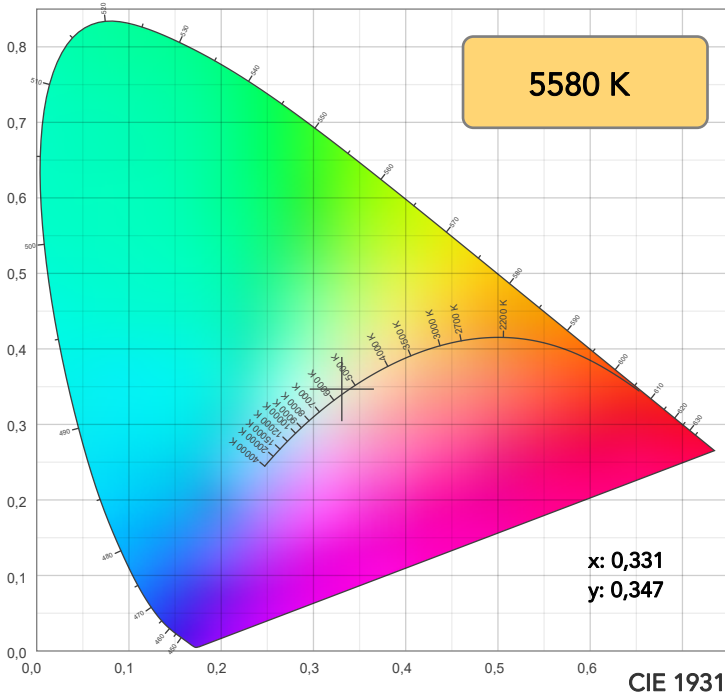
Field angle 10%: 7,2°

Cut off angle 2.5%: 8,1°

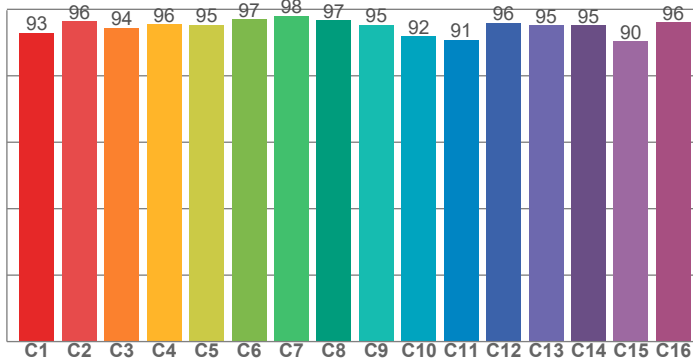
Spectra



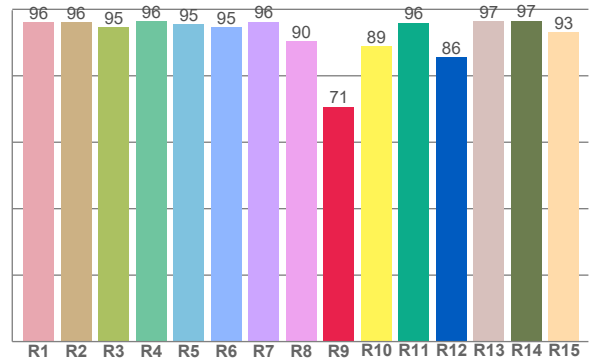
# COLOR DETAILS



**TM30: 94,7**



**CRI: 95,0 (R1-R8)**



CRI R values, only R1-R8 are used to calculate final CRI value

R1	R2	R3	R4	R5	R6	R7	R8	R9	R10	R11	R12	R13	R14	R15
96,1	96,1	94,6	96,5	95,5	94,5	96,3	90,4	70,7	89,0	96,0	85,7	96,5	96,6	93,1

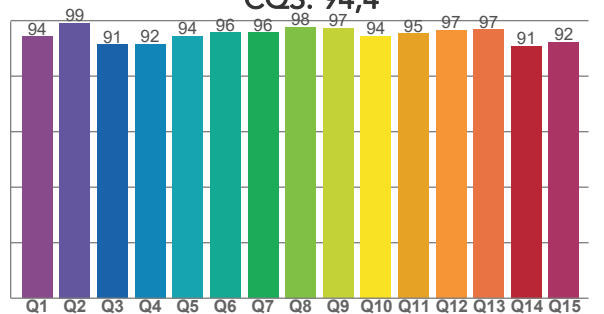
TM30 C values, 16 binned values out of total of 99 C values

C1	C2	C3	C4	C5	C6	C7	C8	C9	C10	C11	C12	C13	C14	C15	C16
92,9	96,4	94,4	95,6	95,4	97,0	98,0	96,6	95,4	92,0	90,8	95,9	95,2	95,3	90,4	96,1

CQS Q values

Q1	Q2	Q3	Q4	Q5	Q6	Q7	Q8	Q9	Q10	Q11	Q12	Q13	Q14	Q15
94,3	99,2	91,5	91,6	94,5	95,7	95,8	97,7	97,3	94,5	95,4	96,6	96,9	90,9	92,3

**CQS: 94,4**



## COLOR PARAMETERS

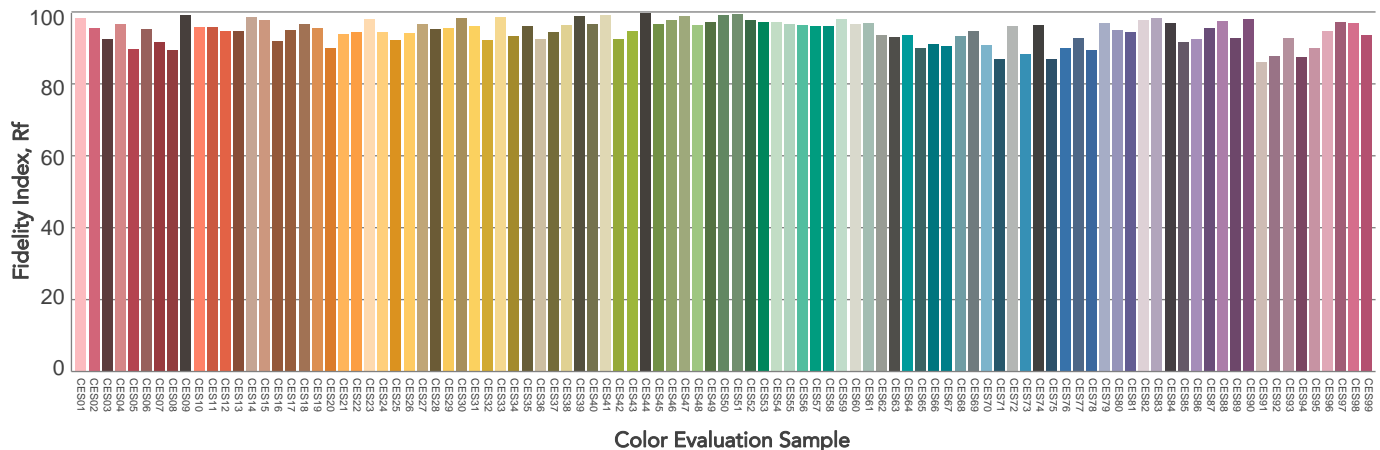
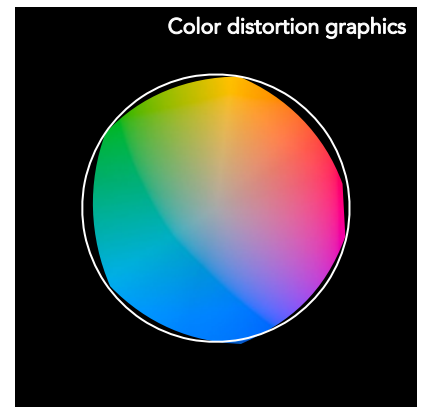
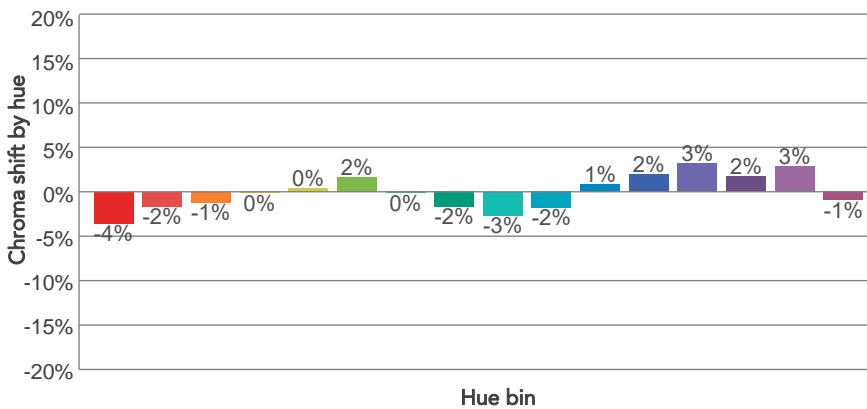
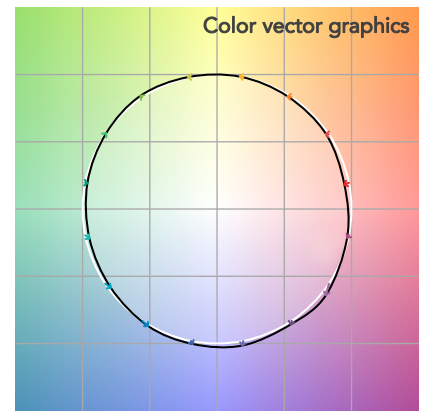
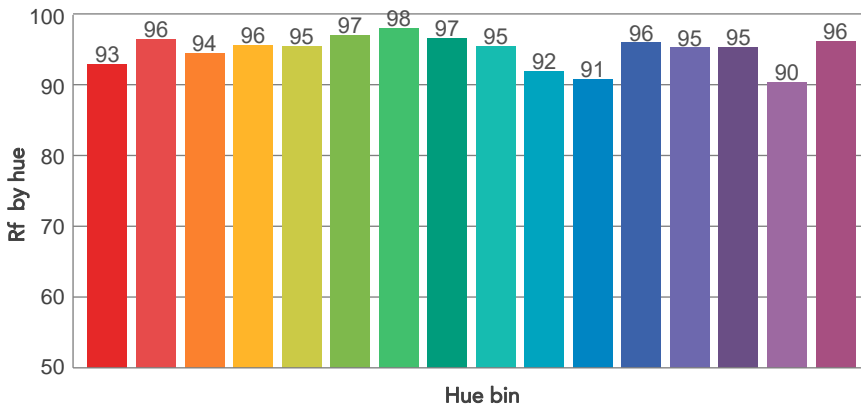
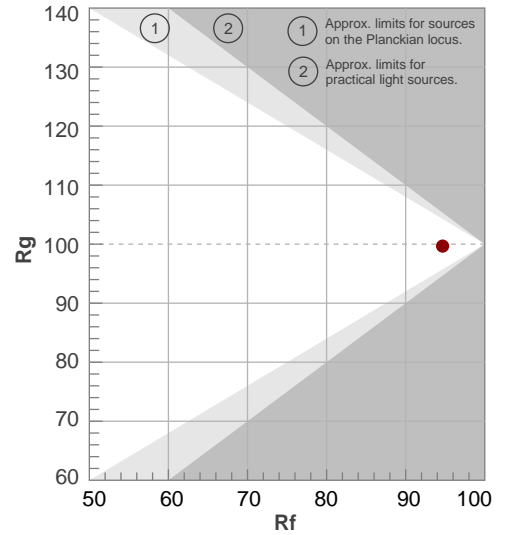
Color temperature	Color rendering index	Red component	Color fidelity	Color gamut	Color quality scale	Television lighting index	Color coordinate cie 1931	Color coordinate cie 1931	Color deviation from black body
CCT	CRI	CRI R9	TM30 Rf	TM30 Rg	CQS	TLCI	x	y	$\Delta uv$
5580 K	95,0	70,7	94,7	99,7	94,4	98	0,331	0,347	0,0004

# TM30 DETAILS

**Rf 94,7**  
Fidelity index Rf

**Rg 99,7**  
Gammut index

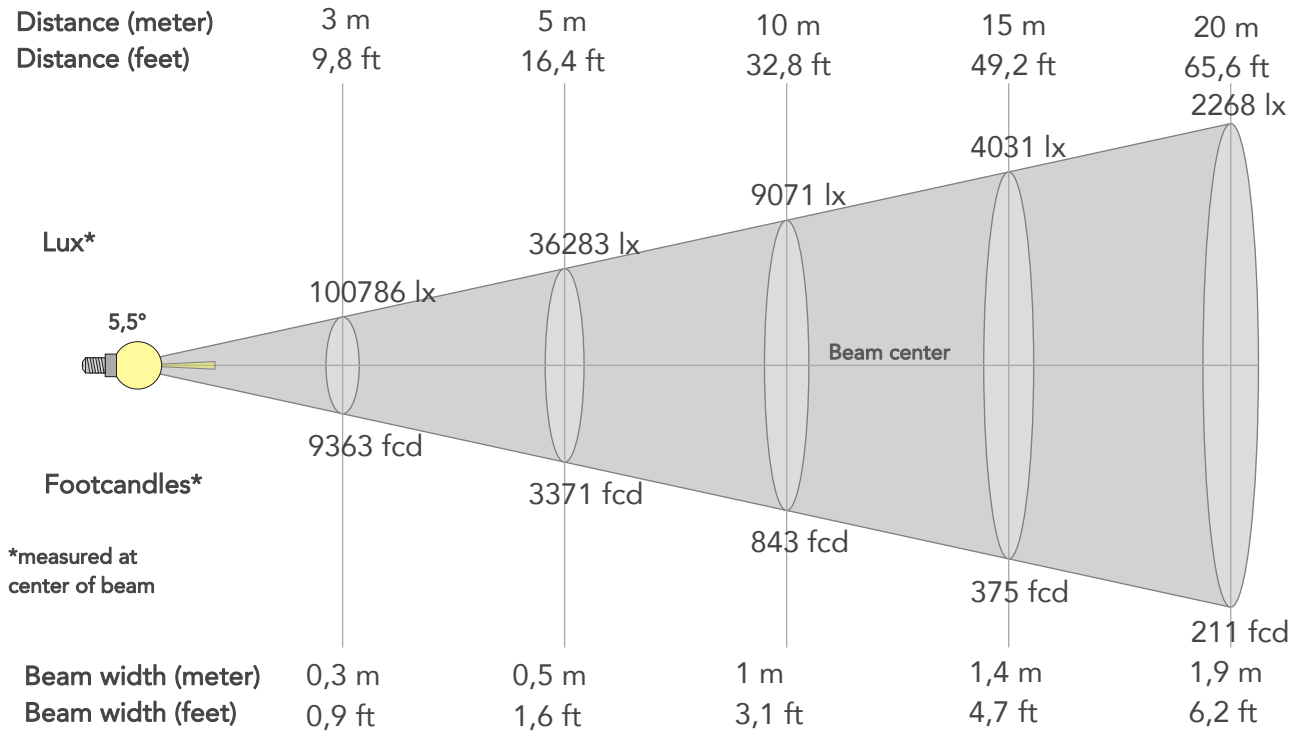
Hue Bin	R <sub>f</sub>	Graphic shifts (%)	
		Chroma	Hue
1	93	-4%	-1%
2	96	-2%	1%
3	94	-1%	3%
4	96	0%	2%
5	95	0%	2%
6	97	2%	1%
7	98	0%	-1%
8	97	-2%	0%
9	95	-3%	3%
10	92	-2%	5%
11	91	1%	6%
12	96	2%	2%
13	95	3%	-1%
14	95	2%	-2%
15	90	3%	-8%
16	96	-1%	-2%



# BEAM DETAILS



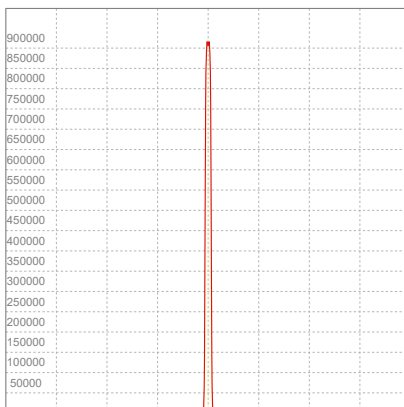
Beam angle 50%	Field angle 10%	Cut off angle 2,5%	Intensity ratio in 120° cone	Intensity ratio in 90° cone
5,5°	7,2°	8,1°	100,0%	100,0%



## BEAM INTENSITIES AND WIDTHS

Distance	1m	2m	3m	4m	5m	7,5m	10m	15m	20m	25m	30m	40m	50m
Distance	3,3ft	6,6ft	9,8ft	13,1ft	16,4ft	24,6ft	32,8ft	49,2ft	65,6ft	82ft	98,4ft	131,2ft	164ft
Lux	907072lx	226768lx	100786lx	56692lx	36283lx	16126lx	9071lx	4031lx	2268lx	1451lx	1008lx	567lx	363lx
Footcand.	84270fcd	21067fcd	9363fcd	5267fcd	3371fcd	1498fcd	843fcd	375fcd	211fcd	135fcd	94fcd	53fcd	34fcd
Beam wid.	0,1m	0,2m	0,3m	0,4m	0,5m	0,7m	1m	1,4m	1,9m	2,4m	2,9m	3,8m	4,8m
Beam wid.	0,3ft	0,6ft	0,9ft	1,2ft	1,6ft	2,3ft	3,1ft	4,7ft	6,2ft	7,8ft	9,4ft	12,5ft	15,6ft

## LINEAR DISTRIBUTION DIAGRAM

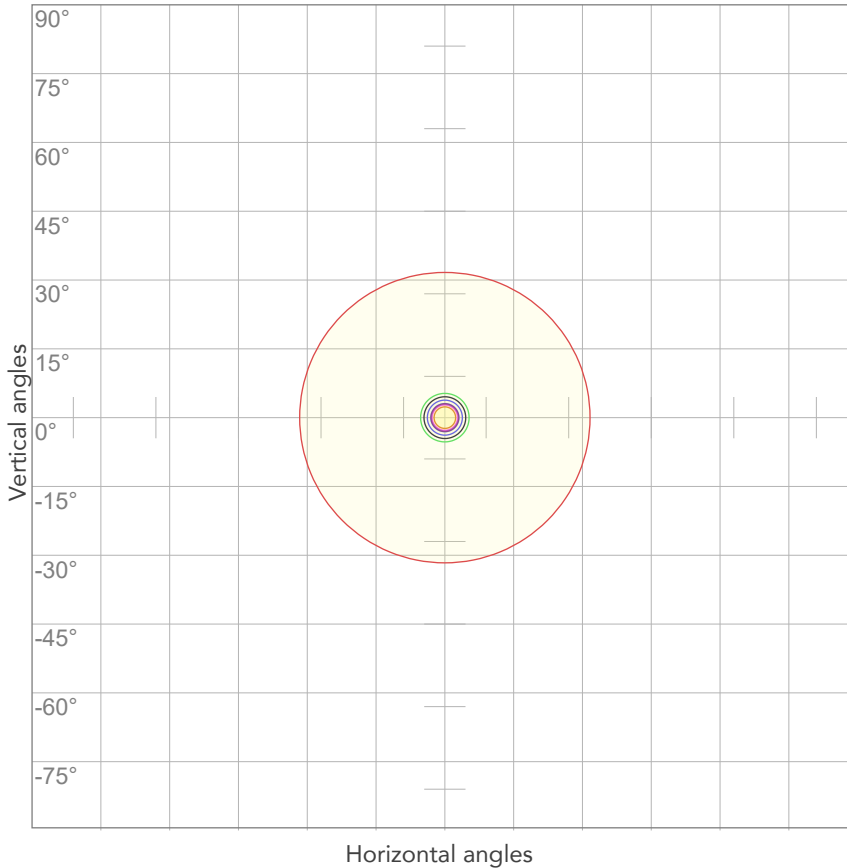


## ELECTRICAL SPECIFICATIONS

Input voltage	Input current	Input power	Power FC	Efficiency
220V	5,58A	1206,3W	0,98	6lm/W

# ISO DIAGRAMS

## ISO CANDELA DIAGRAM



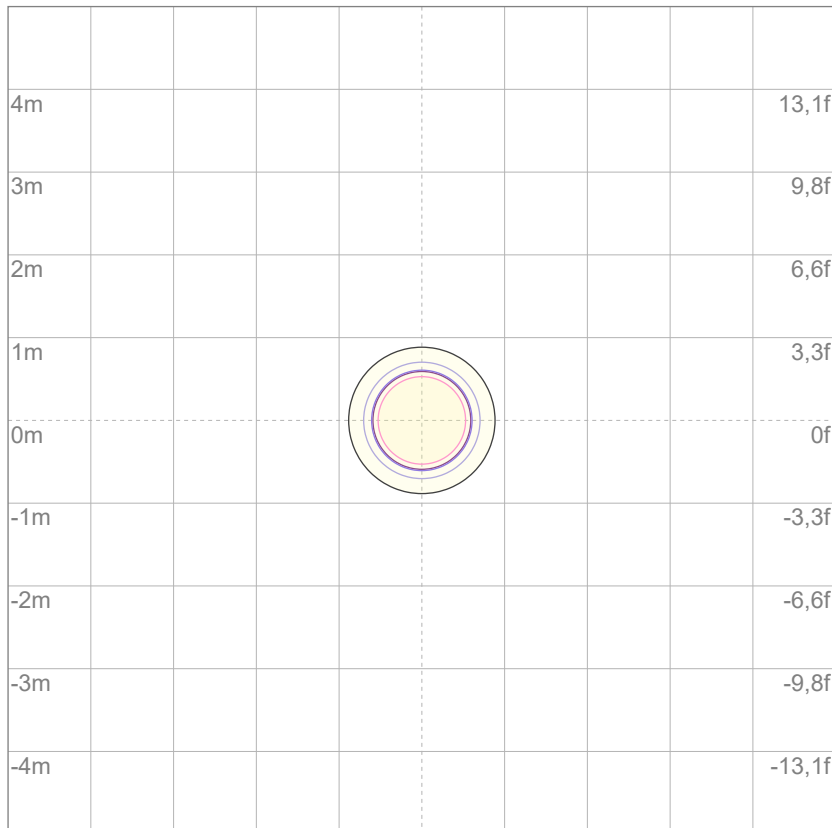
10%	90707 cd
20%	181414 cd
30%	272122 cd
40%	362829 cd
50%	453536 cd
60%	544243 cd
70%	634950 cd
80%	725657 cd

Conditions:

Number of c-planes: 2

Candela at center: 907072 cd

## ISO LUX DIAGRAM



3%	272 lx
5%	454 lx
10%	907 lx
30%	2721 lx
50%	4535 lx

Conditions:

Number of c-planes: 2

Lux at center: 9071 lx

*Lux distribution on a surface when lamp is mounted at 10 meters from the surface.*